

- NEW PIPING
- \* NEW EQUIPMENT SUPPLIED BY MILL.
- △ NEW EQUIPMENT SUPPLIED BY KADANT.

DATE	REV.	DESCRIPTION	REQ	BY	APP.
26-JAN-12	F	AS PER EXISTING INSTALLATION, M.S.		PDA	M.S.
01-NOV-10	E	AS PER INSTALLATION		PDA	N.B.
08-SEP-10	D	REVISED PER METSO'S COMMENTS		PDA	N.B.
03-SEP-10	C	REVISION: SCHEMATIC UPDATED AS PER MARK-UP DWG.		B.B.	
25-AUG-10	B	REVISION: PIPE FLOW VOLUMES ADDED.		B.B.	
23-AUG-10	A	GENERAL ISSUE: FILE NO: 186.		B.B.	

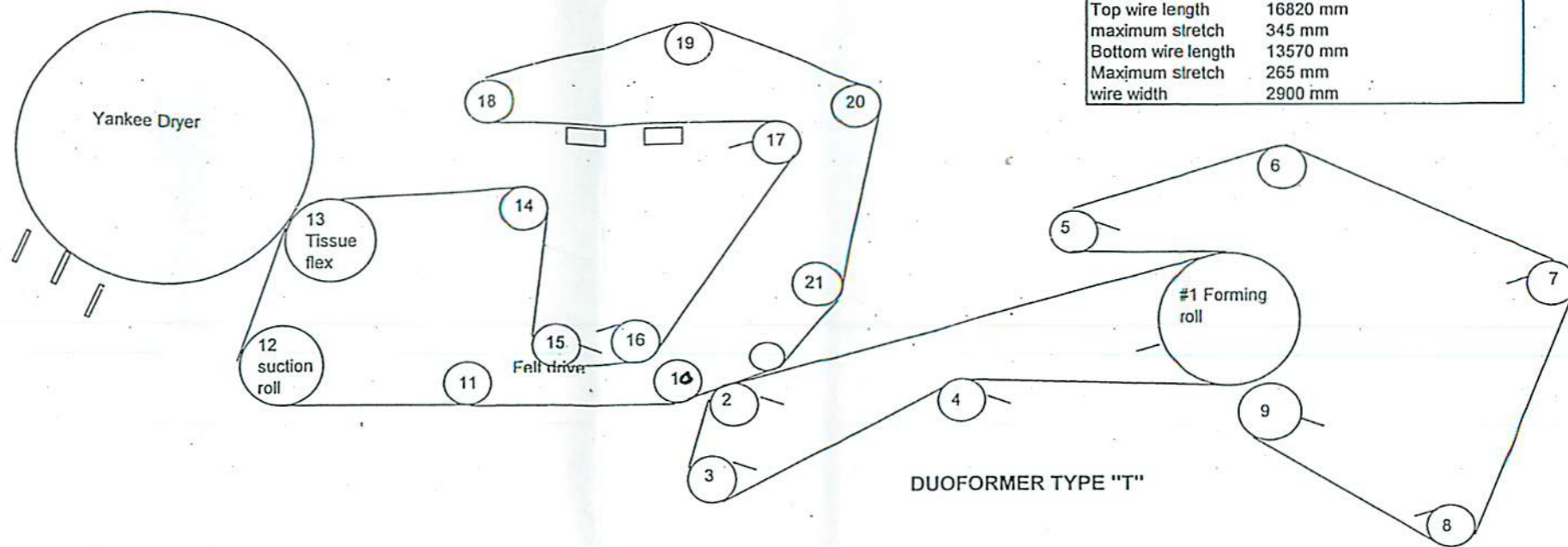
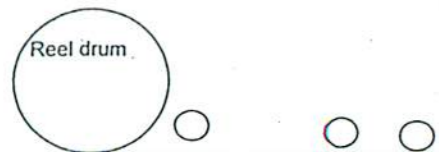
© 2009 PROPERTY OF KADANT. THE DRAWING AND ITS INFORMATION ARE CONFIDENTIAL AND MUST BE RETURNED IF REQUESTED BY KADANT.

REFERENCE DRAWING: AN.5002.05	LOCATION: 186 REQ. NO: S001XX	CUSTOMER: T.M. #2
DRAWN BY: B.B.	PROJECTION:	TITLE: P & I.D. FOR STEAM AND CONDENSATE SYSTEM
CHECKED BY: N.B.	DATE: 23-AUG-10	SYMBOL NO: SCALE: 1:1 CODE: PID SIZE: D DRAWING NO: S000187-001 REV: F

**KADANT**  
AN ACCENT ON INNOVATION

Fabric size	
Outer wire	55 ft X 114"
Inner wire	45 ft X 116"
Felt	105 ft X 120"

Operating speed	524 mpm - 1677 mpm
Balance speed	1800 mpm
Wire tension Max	8 kn/m
Top wire length	16820 mm
maximum stretch	345 mm
Bottom wire length	13570 mm
Maximum stretch	265 mm
wire width	2900 mm



DUOFORMER TYPE "T"

**Suction Roll**

Diameter	955 mm
Face length	3160 mm
drilled length	2900 mm
Shell material	bronze 85/5/5/5
Shell thickness	45 mm
Cover material	rubber type y-300
Cover thickness	20 mm
Hardness	38 P&J+3 P&J
Hole Diameter	4 mm
Open area	appx 18%
Max linear press	70 kg/cm(392 psi)
Suction zones	2
Zone length	600/100 mm

**Press section**

		Diameter	length	thickness	material	doctor
10	return roll	364 mm	3100 mm	5 mm	ebonite	
11	return roll	364 mm	3100 mm	5 mm	ebonite	
12	Suction roll	955 mm	3166 mm	20 mm		
13	Tissue flex	1100 mm				
14	return roll	464 mm	3100 mm	5 mm		
15	Drive roll	464 mm	3100 mm	7 mm		yes
16	return roll	464 mm	3100 mm	7 mm		yes
17	return roll	464 mm	3100 mm	5 mm	ebonite	yes
18	stretch roll	364 mm	3100 mm	7 mm	b diamond	
19	Guide roll	364 mm	3100 mm	5 mm	ebonite	
20	return roll	364 mm	3100 mm	5 mm	ebonite	
21	return roll	364 mm	3100 mm	5 mm		

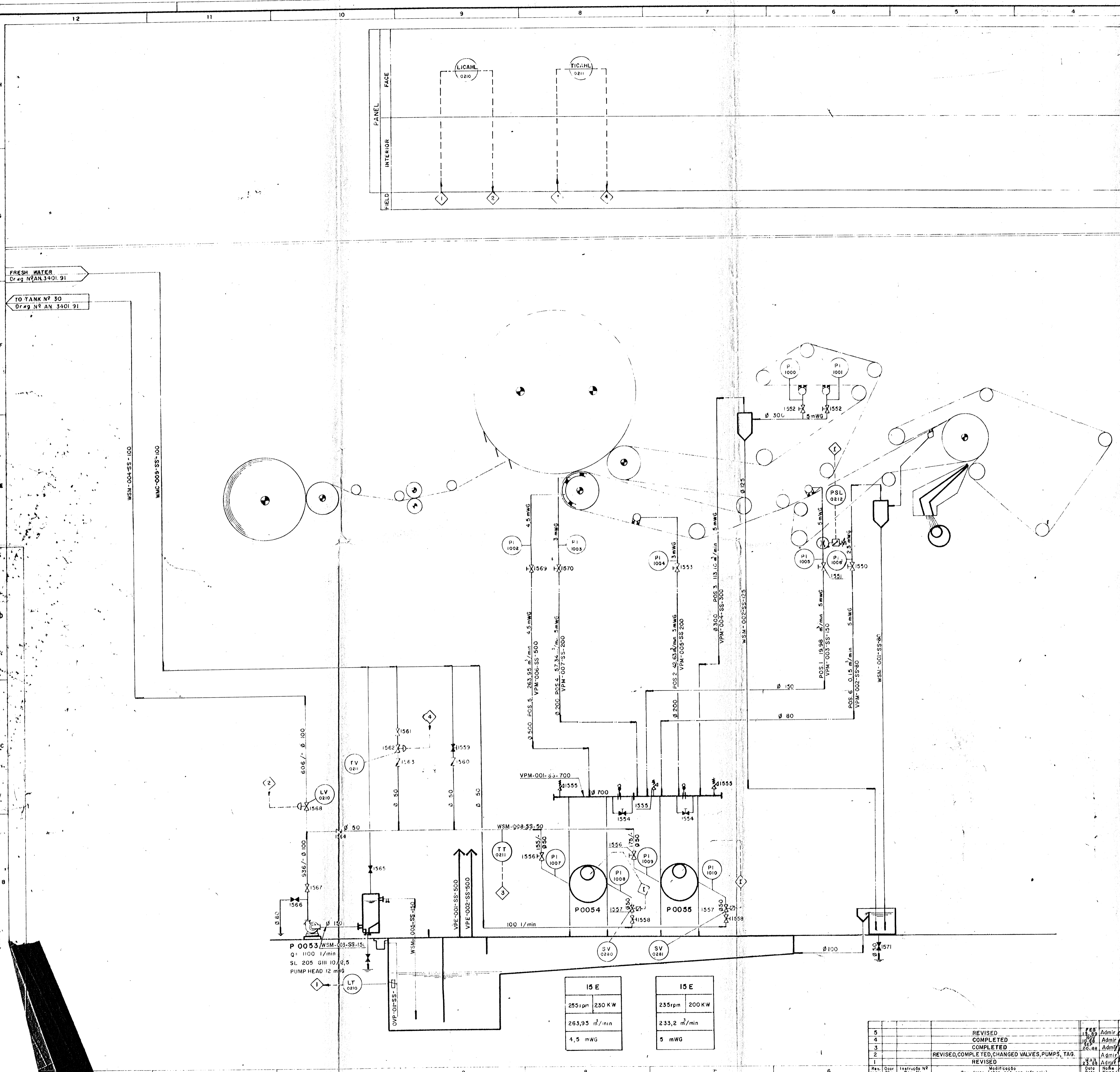
**Tissue Flex**

Diameter	1100 mm
Face length	3710 mm
Cover material	
Cover thickness	
Groove opening	Round
Groove depth	1.3 mm

**Duoformer**

Roll #	name	Diameter	length	thickness	material	doctor
1	Forming roll	1250 mm	3100 mm	10 mm	b diamond	yes
2	return roll	364 mm	3100 mm	7 mm	b diamond	yes
3	stretch roll	464 mm	3100 mm	7 mm	b diamond	yes
4	Guide roll	364 mm	3100 mm	7 mm	b diamond	yes
5	return roll	464 mm	3100 mm	7 mm	b diamond	yes
6	Guide roll	364 mm	3100 mm	7 mm	b diamond	
7	stretch roll	364 mm	3100 mm	7 mm	b diamond	yes
8	return roll	364 mm	3100 mm	7 mm	b diamond	yes
9	breast roll	464 mm	3100 mm	7 mm	b diamond	yes

All roll bearing length is 3550 mm

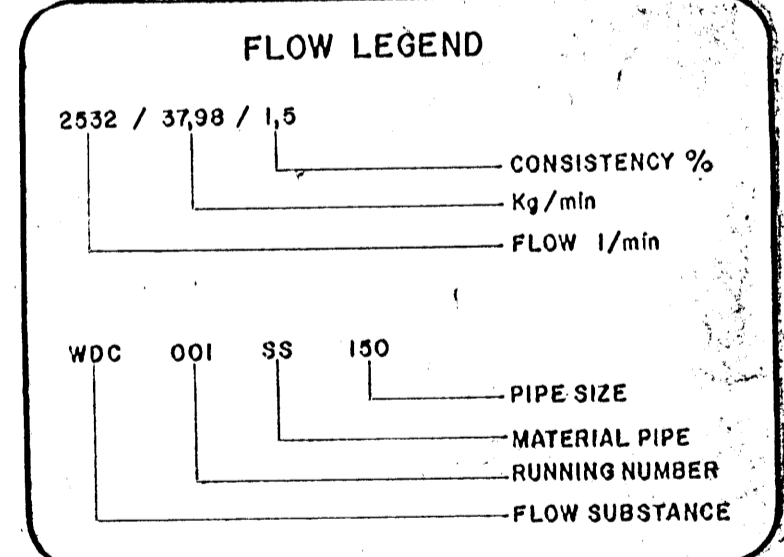


DISTRIBUICAO DE COPIAS / DISTRIBUTION / COPY TO		DATA / FECHA / DATE	
TIPO / TYPE	QUANTIDADE / QUANTITY	1989	1990
TM 2	1		
PI	1		
PT	1		
PA	1		
PEI	1		
PAM	1		
VH	1		

Property of:  
**VOITH S.A. MÁQUINAS E EQUIPAMENTOS**  
 SÃO PAULO - BRASIL  
 Any reproduction as well as any unauthorized use of the drawing, especially its disclosure to third parties for purposes other than those agreed upon, is prohibited.

Main Technical Data	
Wire width	2900 mm
Maximum web width at the reel	2650 mm
Operating speed	524 / 1612 m/min
Drive speed	1800 m/min
Balancing speed	1800 m/min
Paper grade	Creped paper of 12,5 to 40 g/m² on wire.
Production guarantee	80 MTD at 12,5 g/m² on the wire with 100% efficiency and 94% dryness at reel

REFERENCE DOCUMENTATION	
VACUUM SYSTEM	AN 3401.90
FLWSHEET STOCK AND WATER SYSTEM	AN 3401.91
FLWSHEET WASTE PAPER PREPARATION	AN 3401.92
SHOWER DIAGRAM	AN 3401.99
SHOWER LIST	AR 1420.06
CHEMICAL SYSTEM	I 43-12558
COMPRESSED AIR SYSTEM	AN 2205.07
VACUUM TABLE	AN 2205.21
VALVE LIST	AN 2205.30
MANOMETER LIST	AN 2205.31
PUMP LIST	AN 2205.32
DATA SHEET OF MOTOR C.C.	AN 2205.33
INSTRUMENTS SPECIFICATION BOOK	AN 8501.93
VALVES SPECIFICATION	AN 8502.28
SHOWER FILTER SPECIFICATION	AR 0010.74
PUMP OF PRESSURE INCREASE	AR 0010.75
STATIC SCREEN HIDRASIEVE	AR 0010.82
REJECTS COLLECTOR TANK SANDTRAP 5m	AR 0012.26



- STATUS**
- I** FOR INFORMATION ONLY (TYPICAL DRAWING)
  - P** PRELIMINARY (STUDY)
  - B** FOR COMMENTS BY CUSTOMER
  - F1** FINAL TO BE COMPLETED OR IN HOLD
  - F2** FINAL / CERTIFIED
  - S** SHOP DRAWING USED FOR MAINTENANCE
  - A**

15 E		15 E	
255 rpm	230 KW	235 rpm	200 KW
263,95 m³/min		233,2 m³/min	
4,5 mWG		5 mWG	

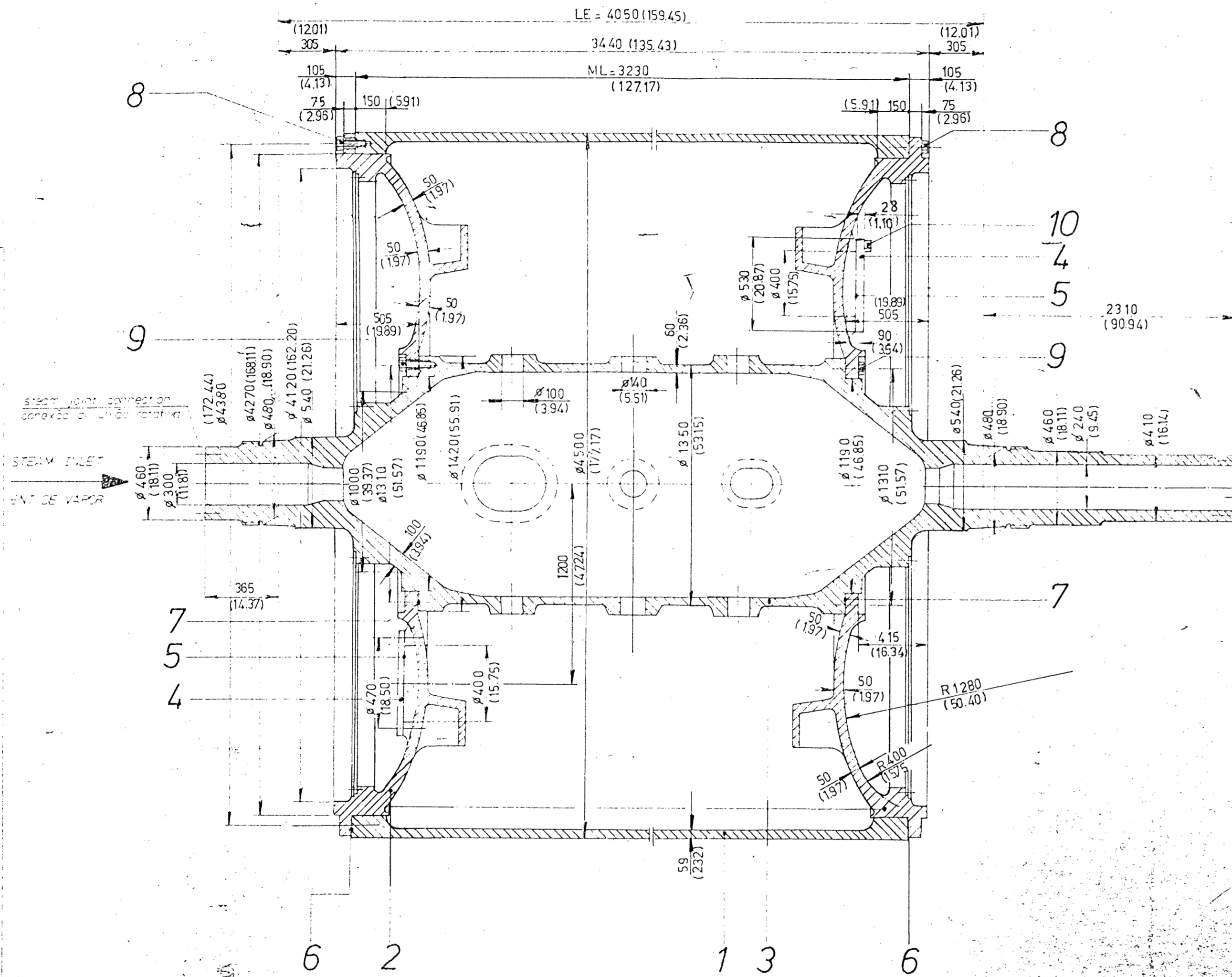
Rev. No.	Descrição	Data	Nome	Função
5	REVISED			
4	COMPLETED			
3	COMPLETED			
2	REVISED, COMPLETED, CHANGED VALVES, PUMPS, TAG.			
1	REVISED			

Fabricação feita para Construção Especial (conforme em Geral walled Constr.		Rigoridade Surface Roughness DIN ISO 1302 Ra em µm		Escala no Original Scale of orig. Material/Material Material/Material No.		Massa (kg) Weight	
Desenho Released		Data/Data 19 87 DEC 22 87		Modelo/Model WDC 001 SS 150		Passo/Step New Pipe	
Sessão Sessão Sessão		PLP PLP PLP		Classificação 1111/Documentation		Vacuum system AN 3401.90	
Voith S.A. SÃO PAULO		Desenho No./Item No. Orig. No./Item No.		5		5	

TENDER SIDE  
LADO COMANDO

DRIVING SIDE  
LADO ACIONAMENTO

Pos.	Quant	Application Denominação	Material
1	1	Shell Camisa do cilindro	SA - 278 Class 55
2	2	Dryer - head Tampa do cilindro	SA - 395
3	1	Hollow shaft Eixo tubular	SA - 395
4	2	Manhole cover Tampa de inspeção	SA-515 Grade 70
5	2	Manhole sealing 32mm espess Ved para abert. de insp.	NA 1000
6	2	Seating Vedação 2mm espess.	SIGRAFLEX
7	2	Sealing Vedação 1,6mm espess.	NA 1000
8	2 x 120 = 240	Hex - bolts M42 ANSI B18.2.3.3M Paraf cabeça sext	SA - 193 Grade B7
9	2 x 36 = 72	Hex - bolts M39 ANSI B18.2.3.3M Paraf cabeça sext	SA - 193 Grade B7
10	2 x 12 = 24	Hex - bolts M24 ANSI B18.2.3.3M Paraf cabeça sext	SA - 193 Grade B7



steam joint connection  
conexão pt. união rotativa

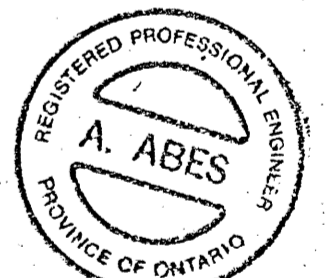
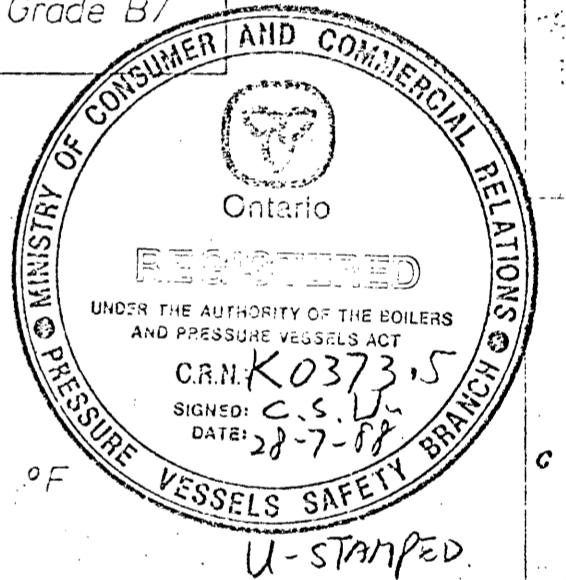
CONDENSATE OUTLET  
SAÍDA DE CONDENSADO

Manufacturer Fabricante VOITH S.A Máquinas e Equipamentos  
Max Allowable working pressure Pressão má admissível de trabalho 116 psi at 365 °F

Capacity Capacidade 1400 ft<sup>3</sup>

Test pressure gauge Pressão de teste manométrica 232 psi

Computation, design, manufacture, testing and inspection according to ASME BPVC Section VIII Div 1  
Cálculos, projeto, fabricação, testes e inspeção de acordo com ASME BPVC Seção VIII Div 1  
ASME EDITION 1986 INCLUDING ADDENDA UP TO 1986 ASME Edição 1986 incluindo adendá 1986



A. Abes  
July 27/88

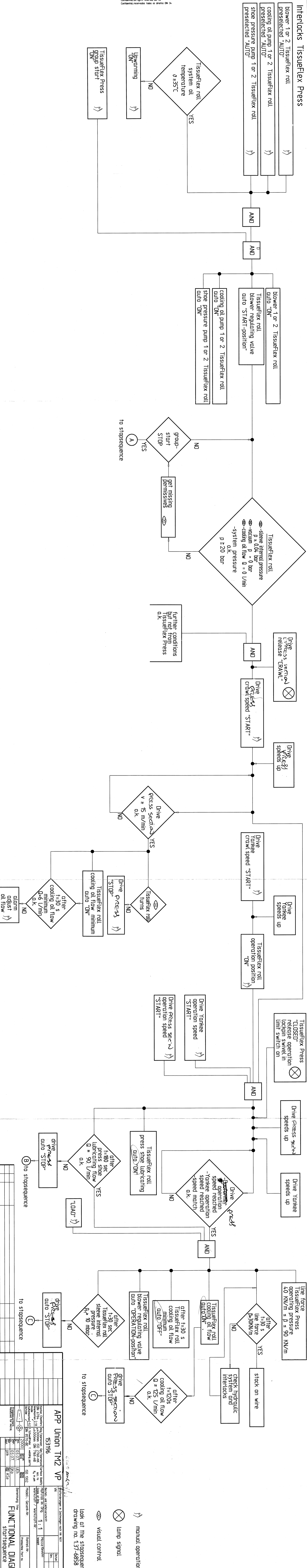
(DIMENSIONS IN PARENTHESIS IN INCH)  
(DIMENSÕES ENTRE PARENTESIS EM POLEGADAS)

REV	IT Projeto		FQ Controle		INSPECTOR Autor	
	DATA	VISTO	DATA	VISTO	DATA	VISTO
0	12.04.88	WP	15.4.88			

Rev	Ocor.	Instrução Nº	Revisão	Modificação	Data	Nome	Visto	Medida	Afastamentos

OP. 36423		TM-2	
Tolerâncias Gerais para Construção Solda de Machining	Construção Solda de Machining	Superfícies Roughness	Superfícies Roughness
1988	07-04	SAFO	SAFO
Desenho Nº	8100	Proj. Nº	AP 8142.93
Desenho Nº / Item Nº	8100	Proj. Nº / Item Nº	AP 8142.93

### Interlocks TissueFlex Press

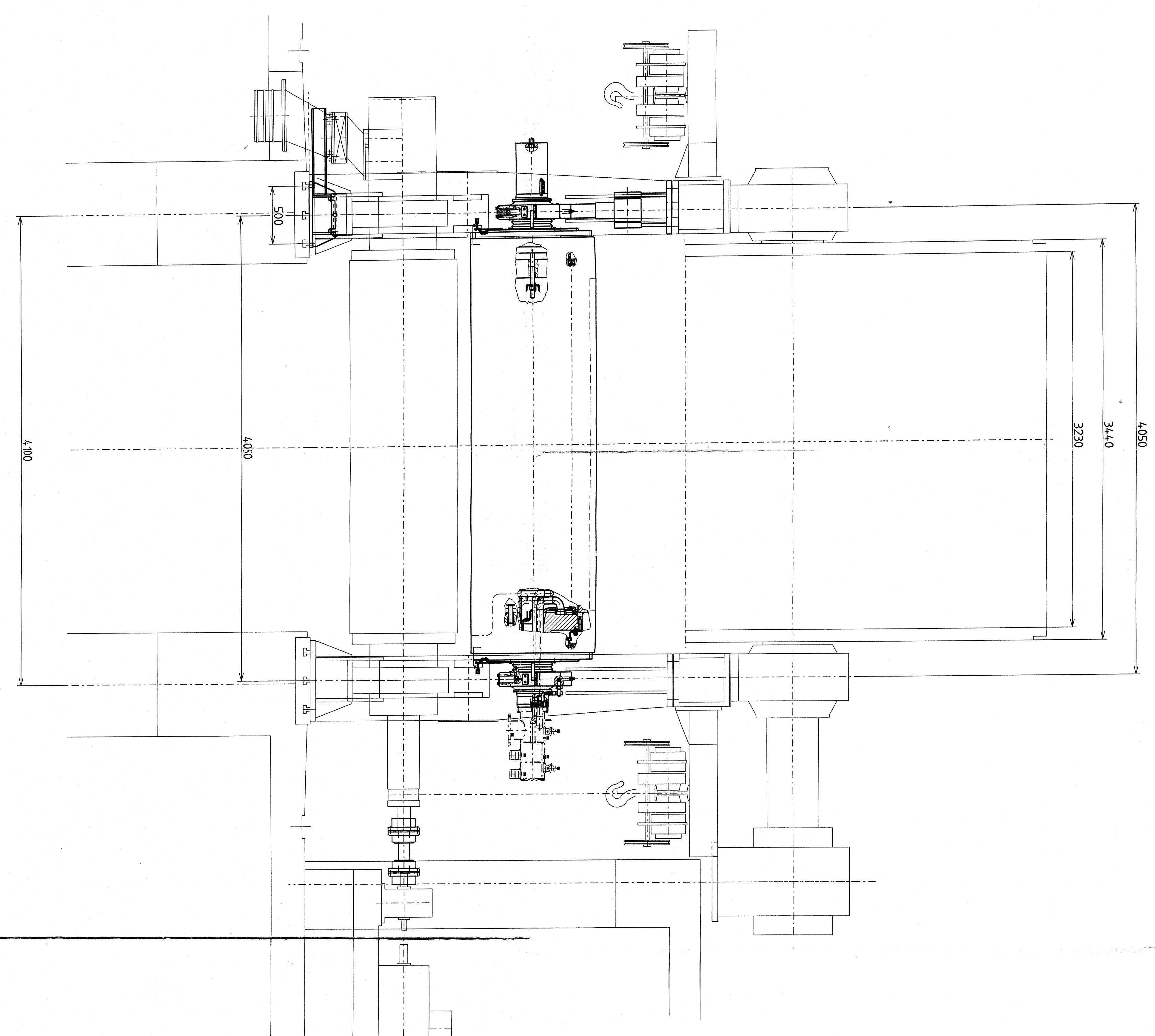
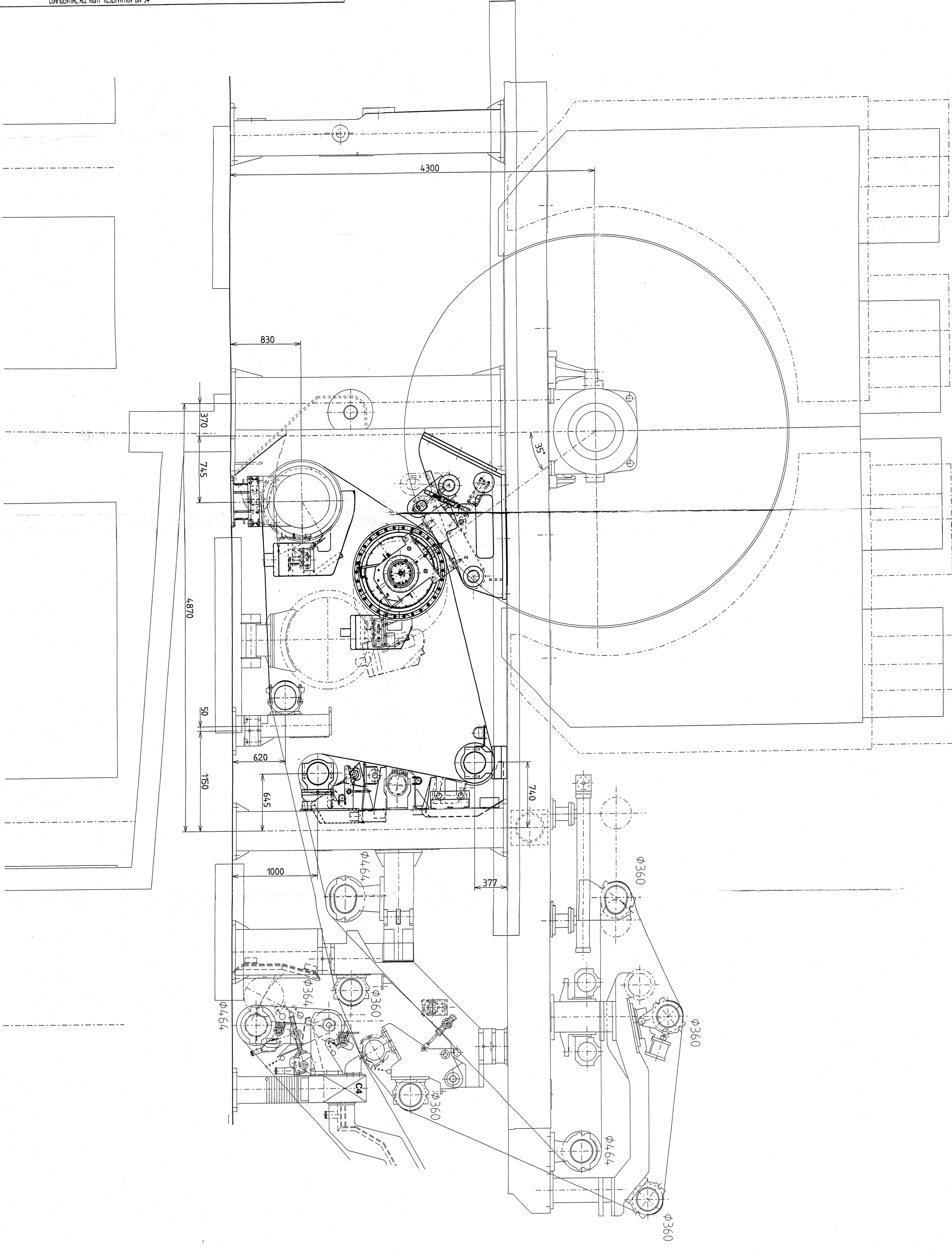


look at the stopsequence drawing no. 1.37-6858

⊗ lamp signal  
⤴ manual operation  
👁 visual control

APP Union TM2 VP		153196	
Name: Glemser / Maß: 140x100mm / Gew: 2768-mlk / DIN: 6794 / Maß: 146 / 4-1000mm / ISO: 2768-mlk / Hersteller: Glemser / Werkstoff: WERNSTÖTTNER / Modell: - / Gezeichnet: - /			
Maßstab: 1:1 Datum: 03.07.07 Zeichner: PKK Prüfer: ASE		Benennung: TissueFlex Press Startsequenz	

CONFIDENTIAL. TODOS OS DIREITOS RESERVADOS EM 24  
 VERTRAULICH. ALLE RECHTE VORBEHALTEN. IN 24  
 CONFIDENTIAL. ALL RIGHTS RESERVED. IN 24



*1155ME  
 PLET*

*[Signature]*

REVISION	DATE	BY	CHKD	QTY
0				

**STATUS**

- FOR INFORMATION ONLY (TYPICAL DRAWING)
- PRELIMINARY STUDY
- FOR COMMENTS BY CUSTOMER
- FINAL TO BE COMPLETED OR IN HOLD
- FINAL / CERTIFIED
- SHOP DRAWING USED FOR MAINTENANCE
- [X]

**ATTENTION**

PROPERTY OF VÖLTH S.A. MACHINES E EQUIPAMENTOS. ANY REPRODUCTION AS WELL AS ANY UNAUTHORIZED USE OF THE DRAWING, ESPECIALLY ITS DISCLOSURE TO THIRD PARTIES FOR PURPOSES OTHER THAN THOSE AGREED UPON, IS PROHIBITED.

WIRE WIDTH: 2900 mm  
 TROCKEN PAPER WIDTH: 2650 mm  
 DRIVE SPEED: 1800 r/min  
 DESIGN SPEED: 1800 r/min  
 PAPER GRADE: 12.5 to 40 g/m<sup>2</sup>  
 PRODUCTION CAPACITY: 1/24h

Atlantic TM-2  
 PRELIMINARY ONLY  
 NOT FOR CONSTRUCTION  
 ATLANTIC PACKAGING PRODUCTS LTD.

42112aa Voith Head Box & Crescent Former

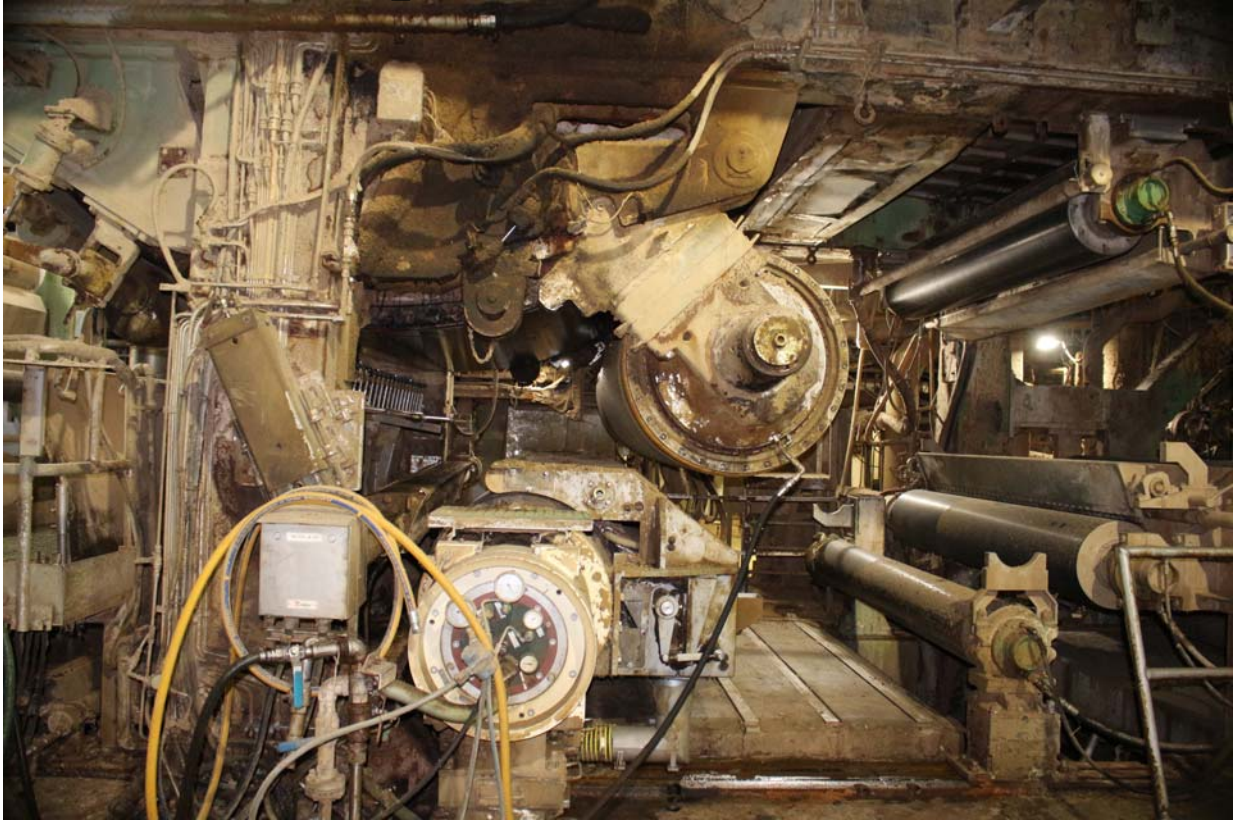


42112b Yankee Hood





42112c Shoe Press, Vacuum Roll, Steam Box



42112d Vacuum Pump



42112e Shoe Press Hydraulics



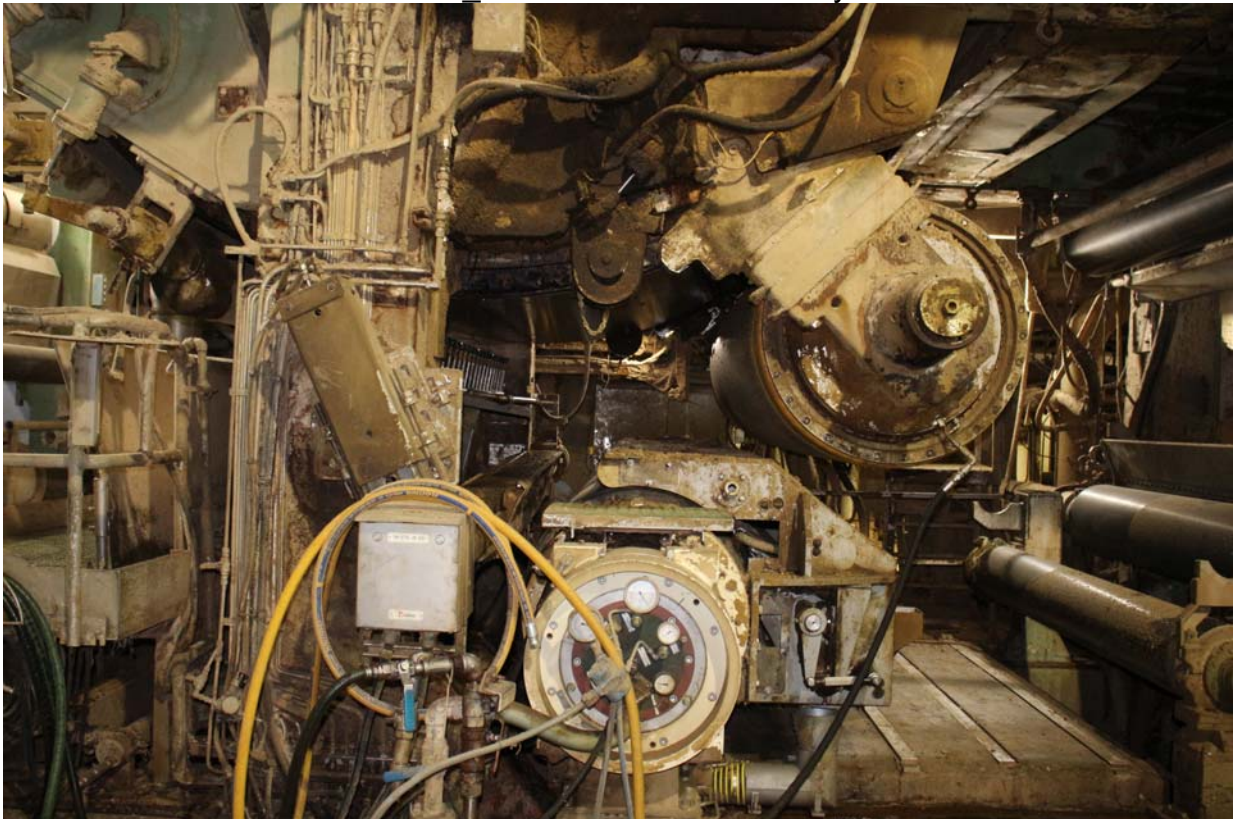
42112f Shoe Press Hydraulics



42112g Shoe Press & Yankee Dryer



42112h Shoe Press & Yankee Dryer



42112i Roll Wrapper



42112j Scanner



42112k Reel Spool Magazine



42112l Reel



42112m\_Metso Dust Control System



42112n\_MCC



42112o\_MCC



42112p\_Felt & Wire Run



42112q\_Heat Recovery



42112r\_Dry End





42112s Fan Pump



42112t Cresnet Former Wet End



42112u\_Doctor Blades



42112v Approach Flow Screen



42112w\_Control Room

