

# MULTI MILLION DOLLAR OFFERING OF SCREW MACHINES & CNC PUBLIC AUCTION BELDEN WIRE

224 N. MAIN STREET, HORSEHEADS, NY 14845  
TUESDAY SEPTEMBER 23<sup>RD</sup> @ 10AM EDT  
*OPEN INSPECTION SEPTEMBER 22<sup>ND</sup> FROM 9AM-4PM EDT*



**30+ ACME GRIDLEYS,  
10 DAVENPORTS,  
OUTSTANDING SELECTION  
OF CNC'S &  
MACHINE TOOLS!**



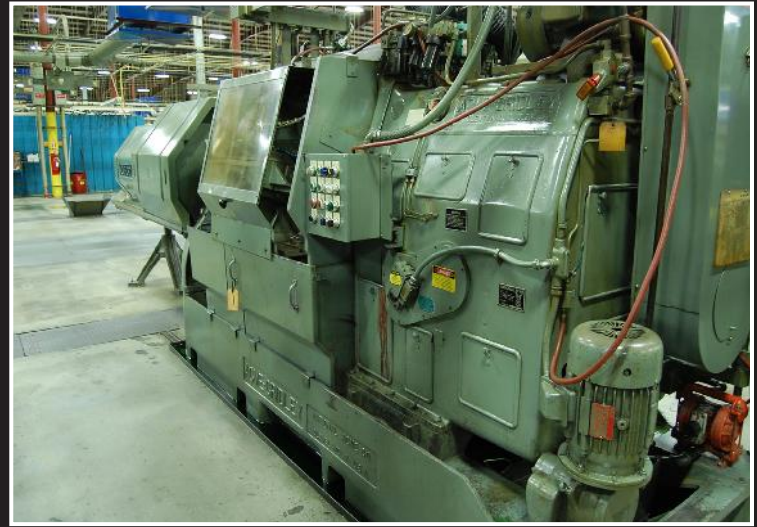
+ ACME GRIDLEY, BROWN & SHARPE, DAVENPORT CNC Screw Machines, (8) HAAS, CINCINNATI, HWACHEON, CITIZEN, CNC VMC's and Turning Centers, Bar Feeders, (2) HARDINGE SUPER PRECISION Lathes, VANDORN 120 Ton Horizontal Injection Molding Machine, (20) BRIDGEPORT, HARTFORD, BARKER, ALLIANT vertical mills, (2) EUBAMA, BROWN & SHARPE CMM's, Inspection, (5) LEBLOND, HARRISON, SOUTHBEND, VICTOR engine lathes, (2) parts wash/rinse lines with recent upgraded automation, GORBEL free standing crane system with approx. 60ft x 35ft structure, (2) INGERSOLL RAND 200 HP & 150 HP rotary screw air compressors and dryers, (4) MITSUBISHI Wire EDM's, (250+) sections of pallet and cantilever racking, ROTO FINISH finisher, BLISS 60 ton OBI press with updated controls, (50) CLARK, AIR KING, HAKO mist and filtration units, (45) test and assembly benches, NISSAN, TOYOTA, HYSTER LPG forklifts, optical comparators, Large qty of VIDMAR, ROUSSEAU and LISTA tool cabinets and work benches, tooling, horizontal and vertical bandsaws, grinders, transformers, switch gear and cooper wire runs throughout facility, factory support equipment, office furniture and more.

Sale managed & conducted by:

In conjunction with:



# ACME GRIDLEY 6 & 8 SPINDLE SCREW MACHINES - 1" TO 2 5/8"



**30+ MACHINES  
& ALL THE TOOLING  
TO BE SOLD!**

( 16 ) Acme Gridley Model 1 RAN 6 Spindle Screw Machine; max capacities = round @ 1", square @ 45/64" and hex @ 55/64", range of spindle speeds 239 – 2320 rpm's, 15 hp motor.

(8) Acme Gridley Model 1RA 6 Spindle Screw Machine; max capacities = round @ 1", square @ 45/64" and hex @ 55/64", range of spindle speeds 239 – 2320 rpm's, 15 hp motor.

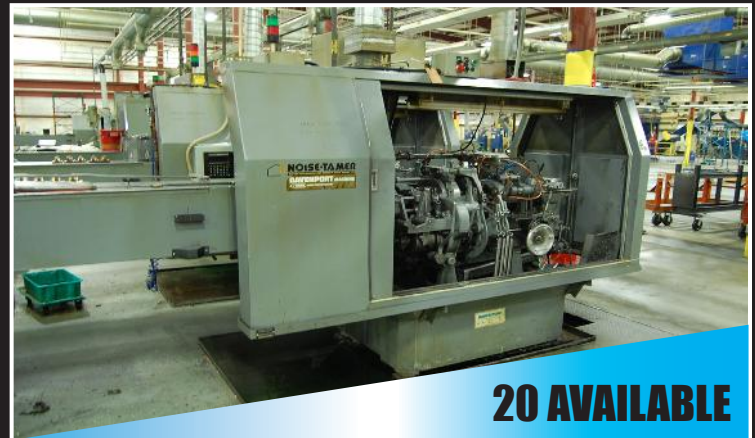
( 4 ) Acme Gridley Model 1 5/8 RBN 8 Spindle Screw Machine; max capacities = round @ 1 5/8", square @ 1 5/32" and hex @ 1 13/32", range of spindle speeds 168 – 1529 rpm's, 30 hp motor.

(1) Acme Gridley Model 2 5/8 RB 6 Spindle Screw Machine; round @ 2 5/8", square @ 1 27/32" and hex @ 2 17/64", range of spindle speeds 101 – 1085 rpm's, 40 hp motor.

(3) Acme Gridley Model 2 5/8 RBN 8 Spindle Screw Machines; max capacities = round @ 2 5/8", square @ 1 27/32" and hex @ 2 17/32", range of spindle speeds 168 – 1529 rpm's, 40 hp motor.

(2) Acme Gridley Model 1 1/4 RB 8 Spindle Screw Machines; max capacities = round @ 1 1/4", square @ 3/8" and hex @ 1 3/32", range of spindle speeds 168 – 1529 rpm's, 30 hp motor.

# DAVENPORT HP 5 SPINDLE SCREW MACHINES



**20 AVAILABLE**



(10) Davenport HP 5 spindle CNC screw machines; Noise Tamer, spindle pick off and deburring, bar capacities = round @ 0.875", hex @ 0.750" and square @ 0.625"

# BROWN & SHARPE SCREW MACHINES



**7 AVAILABLE**

(2) Brown & Sharpe Ultramatic R/S No. 2 auto screw machine capacities of 1 1/4" & 3/4"  
 (2) Brown & Sharpe No. 2 auto screw machine capacities of 1 1/2" & 3/4"  
 (2) Brown & Sharpe Ultramatic R/S capacities of 3/4"  
 Brown & Sharpe 00 auto screw machine

# CNC MILLING & TURNING CENTERS - HAAS, CINCINNATI & HWA CHEON



Haas VF3 CNC machining center; 2000 vintage, 24 position tool holder, 19" x 40" table, automatic pallet changer, 20 h.p. Vector Dual drive, Haas programmable coolant, serial 21536



Cincinnati ERM Arro 1000 CNC milling machine; 20 position tool holder, chip conveyor, 24" x 44" table, Cincinnati Acramatic A2100 controls, coolant, serial 7049-A00-99-0769



Cincinnati Milacron Avenger 200 MT CNC turning center; 12 position tool holder, Acramatic 850 SX controls, serial 3650AMT96-0009



Cincinnati Milacron ERO Arro 500 CNC milling machine; 21 position tool holder, 20 1/2" x 27 1/2" table, Vickers Acramatic 2100 controls, coolant, serial 7042 A00 96 0859



Hwa Cheon H1 ECO 31A CNC turning center; 1994 vintage, IO Position tool holder, Fanuc Korea O-T series controls, serial 94051753

# MIYANO CNC TURNING CENTER & EUBAMA CNC ROTARY TRANSFER MACHINES



Miyano JNC 45 CNC machining center; Fanuc OT controls, chip conveyor, coolant, 8 position tool holder, serial JN450553



Eubama S8 rotary transfer machine; 1998 vintage, 2T, serial 81354

# ENGINE LATHES - HARDINGE, SOUTHBEND & LEBLOND MAKINO



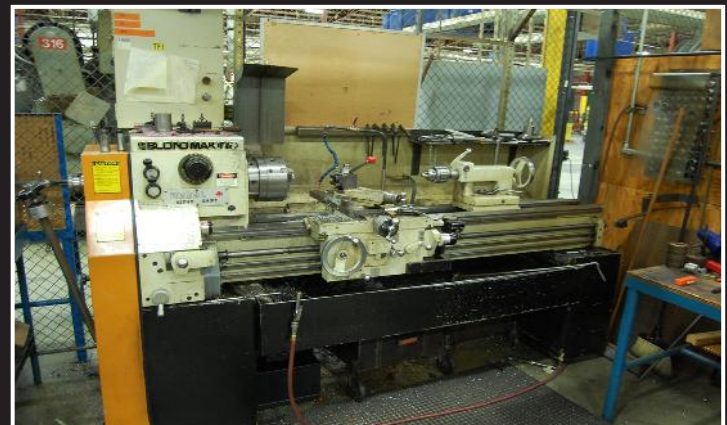
Hardinge Super Precision engine lathe; 1 1/4" hole through center, 10" swing, 18" center to center, carriage feed



Hardinge model DSM-59 super precision engine lathe; 1 hp, 8" swing, 18" center to center, 1 1/4" hole through center, Gusher coolant system



Southbend Nordic 15 engine lathe; spindle speed 40 - 2000 rpm's, 2" hole through spindle, 8" swing, 30" center to center, 57" bed, serial CN700228B79



LeBlond Makino Regal Servo Shift engine lathe; 15" precision, serial 15c-873

# ENGINE LATHES - HARRISON & VICTOR



Harrison Alpha 400 engine lathe, spindle speed 15 - 2500 rpm's, 16" swing, 1 1/4" hole through center, 44" center to center, GE Fanuc x/z control, serial A30531-0400



Victor 1340 GHE engine lathe; 6 3/4" swing, 30 1/2" center to center, 53" bed, 1 1/4" hole through spindle, spindle speed 70 - 2000 rpm's, serial 18303023

## VERTICAL MILLING MACHINES - BRIDGEPORTS, HARTFORD, ACER, ALLIANT & NANTONG



Bridgeport Series 1 vertical milling machine; 2 hp, spindle speed 500 - 4200 rpm's, Sony X/Y readout, left to right power feed, 9" x 42" table, serial 185293



Bridgeport vertical milling machine; spindle speed 500 - 4200 rpm's, 9" x 48" table, Bridgeport 8F power feed, serial 266312



Hartford M05-10MD vertical milling machine; 9" x 42" table, spindle speed 60 - 4200 rpm's, Accurite digital read out, serial 8812050



Bridgeport model 137992 vertical milling machine; Acer head, spindle speed 60 - 4500 rpm's, 9" x 48" table, left to right power feed, Accurite X/Y digital readout, serial 137992



Alliant 1054-V3 vertical milling machine; spindle speed 70 - 4200 rpm's, Anilam Wizard 150 Plus X/Y readout, 10" x 54" table, left to right power feed, serial K3VL-1143



Nantong vertical milling machine; 10" x 54" table, spindle speed 70 - 600 rpm's, Mitituyo x/y readout, left to right power feed, serial 41586

# BARKER AMP & 503 HORIZONTAL & CINCOM CITIZEN MILLING MACHINES



Barker model AMP milling machine; spindle speed 350 3060 rpm's, coolant, SPX Hytec hydraulics for Hardinge 5C collet holder, serial 1505B



Barker model 503 horizontal milling machine; spindle speed 350 - 3450 rpm's, 6" x 20" table



Cincom L16 Citizen milling machine

# SURFACE GRINDERS - SHARP, GRIZZLY, ROYAL OAK, K.O. LEE, HARIG & TOP WORK



Sharp model SH920 hydraulic surface grinder; 10" x 19 1/2" electro magnetic chuck, 1999 vintage, serial 90905-04



Grizzly model G3155 surface grinder; 2 hp, spindle speed 3450 rpm's, 16" x 8" table, manual magnetic chuck, 2006 vintage, serial 06051354



Royal Oak form relief grinder; 12" optical comparator attachment, Accurite X/Y read-out, Universal Form relieving fixture, serial 25R0244



K. O. Lee model C1020 L2 grinder; Leematic 2000 controls, serial S80BS2576-2-97



Harig (by Bridgeport) Ballway hydraulic surface grinder; 6" x 18" manual magnetic chuck



Top Work Super Max M40 grinder, 1995 Vintage, 5" x 37" table, serial 2467

**ATTENTION BUYERS: Items that are purchased at the auction are to be removed by appointment only!**

# TOOL GRINDERS - K.O. LEE, MOHAWK & BLACK DIAMOND



K. O. Lee model B360 tool grinder; serial 10273-467



Mohawk model 308 large drill grinder; serial 308182



Black Diamond bench top tool grinder

# OPTICAL COMPARITORS - J & L, DELTRONIC & MICRO VU



J & L Tec 14 optical comparator; 14" screen, Quadra Check 2000 digital readout, 5" x 20" table



Deltronic DH 124 optical comparator; 14" screen, 5" x 15" table, Gage Master x/y readout, serial 249083754



Micro Vu M103 optical comparator; 14" screen diameter, Micro Vu x/y/z readout, 5" x 18" table, serial 5901

# COORDINATE MEASURING MACHINES - BROWN & SHARPE



Brown & Sharpe Reflex coordinate measuring machine, 500 lb max, 29 1/2" x 22" granite surface table, serial 0197-1513



Brown & Sharpe Micro Val PFX coordinate measuring machine; 22" x 29 1/2" granite surface table, serial 112218



# WIRE EDM'S - (4) MITSUBISHI DWC90CR



**4 TO CHOOSE FROM**

Mitsubishi DWC90CR wire EDM machine; 1996 vintage, Sony X readout, serial 069D1422

Mitsubishi DWC90CR wire EDM machine; 1996 vintage, Sony X readout, serial 559D1388

# VERTICAL & HORIZONTAL BAND SAWS - DO ALL, WELLSAW & JET



Do All 2013-V band saw; 12' x 10" blade, with welder & grinder, 26" x 26" table, 20" throat, 13" max height, serial 500-95834



Wellsaw 613 horizontal band saw; .75 X .032 x 98.5 blade size, 13" window, serial 1414



Jet HUBS 7MW horizontal/ vertical band saw; 3/4 hp, single phase, 1994 vintage, serial 414459

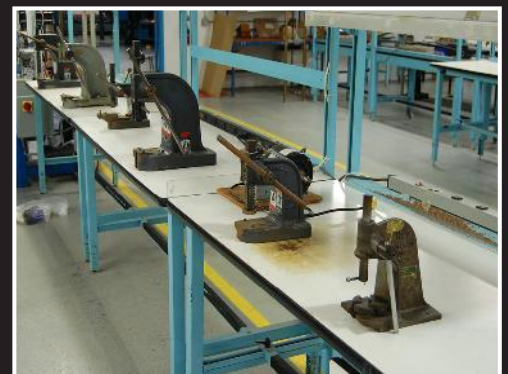
# PRESSES - BLISS OBI PUNVH PRESS, DAKE H FRAME, & VARIETY OF ARBOR TYPE



Bliss C60 OBI punch press; slide adjust 3, shut height 14 1/4", Cienco PC1-100 controls, Micro Safe light curtains, air counter balance, 4" shut height, serial H61646HP47139



Dake H frame press



large selection of various tonnage Dake & Greenerd arbor presses

# COMPRESSED AIR - IR ROTARY COMPRESSORS, DRYERS, FILTER & TANKS



Ingersoll Rand SSR EPE 200 2S rotary air compressor; 200 hp, 125 psig rated operating pressure, 990 cfm capacity, 78,870 total hours & 60238 load hours, serial FF1951V00169



Ingersoll Rand SSR-EP150 rotary air compressor; 150 hp, 1245 psig rated operating pressure, 670 cfm capacity, 59,781 total hours, 37,052 load hours, serial F13326U96157



Ingersoll Rand DXR750A compressed air dryer; 1996 vintage, serial 96BDXR0794



Ingersoll Rand TR1500CHE compressed air filter, 1500 scfm, 200 psig



Air receiving tank; 1994 vintage, 150 psi rating, 9' x 40" diameter

# DONLEE TECH. BOILER, MARATHON COMPACTOR & CLARK AIR FILTRATION



Donlee Technologies YSL-300-N200-285 package boiler; 1997 vintage, firing rate 12562 cfh, rated steam capacity 10.043.000, max working pressure = H2O @ 30 and steam @ 15, serial 97-204-84 H-12549



Marathon trash compactor with Ram Jet container



Clark air mist collector/ filtration unit (40+ through out facility)

# FORKLIFTS - HYSTER, TOYOTA & NISSAN



Hyster H60 Fortis fork lift; 5700 lb capacity, L.P. powered, 3 stage mast, 170" lift height, side shift, 42" forks, 2638 hours, serial L177B23754F

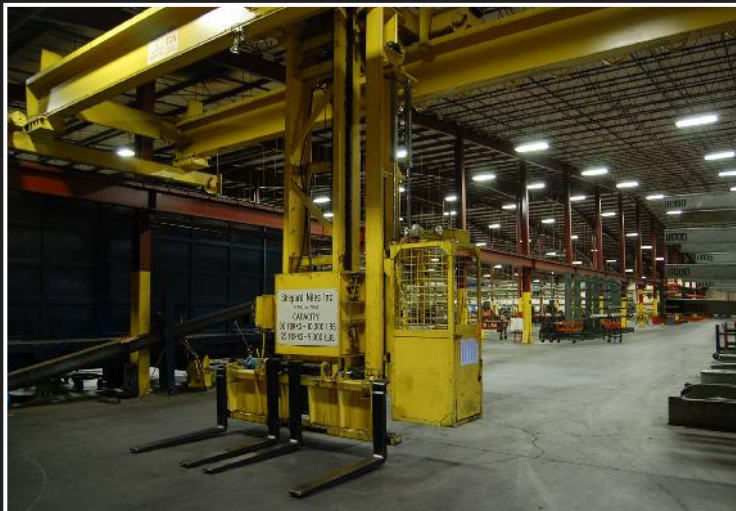


Toyota 3FGL20 fork lift; 3000 lb lift capacity, 2 stage mast, 48" forks, 120" lift height, L.P. powered, serial 3FGL25-12813



Nissan KCPH02A25PV Enduro 50 fork lift; 4400 lb lift capacity, 187" lift height, 3 stage mast, side shift, 42" forks, 4957 hours on meter, L.P. powered, serial KCPH02P908761

## SHEPARD NILES OVERHEAD FORK LIFT STYLE MATERIAL TRANSPORT



Shepard Niles Inc. fork lift style overhead rotating lifting/ transport system; (4) forks rated at 10,000 lbs, (2) forks rated at 5,000 lbs, approximate 37' span, approximate 368' runway, width between outer forks = 115" and interior forks = 38", serial 72165

## VARIOUS SIZES & BRANDS OF PALLET & CANTILEVER TYPE RACKING



**40+ THROUGHOUT PLANT**

# FREE STANDING GANTRIES WITH HOISTS



Snap Trac 1/2 ton hoist; freestanding 150" span x 16' run, hook to floor 8'



Gorbel 2000 klb capacity free standing hoist; Coffing JLC 1 ton hoist, approximate 34' span, approximate 57' runway, 10' hook to floor



Spanco 1 ton "A" frame portable gantry; 114" wide with adjustable height, Budgit 250 lb electric hoist

## OTHER MATERIAL HANDLING ASSETS; LANTECH WRAPPER & STOCK CARTS



Lantech Q300 stretch wrapper; 115/20, 60" table, serial Q2075



several stock carts



Bastian Automation Engineering conveyor system consisting of: (1) 12" capacity Hytrol powered conveyor, (1) 10' section, (1) 7' section with 20" capacity, (1) 45' section with 20" capacity

## VIDMAR & ROUSSEAU, FLAMMABLE LIQUIDS & HD 2 DOOR CABINETS



Stanly Vidmar tool cabinets; assorted sizes



Rousseau 8 drawer tool cabinet



Rousseau 13 drawer tool cabinet, 2 door storage cabinet, 12 gallon Eagle flammable cabinet

# PLASTIC INJECTION MOLDING - VANDORN 120



Van Dorn 120-HT-8F injection molder; 1994 vintage, RS rotating screw, clamp tonnage 230 max, 20 ounce injection unit capacity, serial 547

## HEAT TREAT & PARTS WASHING



Refractory Maintenance Corp heat treat furnace; natural gas fired, Honeywell controls and components, air accuated doors



CDF parts washing machine; 23" x 8 1/2" opening, approximate 50' length, includes (6) Rosedale filtration units



FRI Systems finshing and cleaning system; (2) stage washing, (2) stage rinsing, (1) stage drying, powered conveyor with 40" x 20" baskets

## ELECTRICAL - BUS BAR AND PLUGS - SEVERAL HUNDRED FEET



hundreds of feet of bus bar and plugs



Square D bus bar and plugs; hundreds of feet

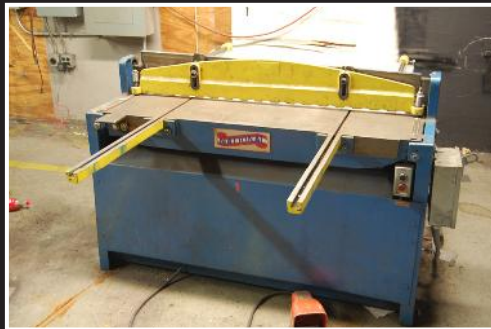


hundreds of feet of bus bar and plugs

# MISCELLANEOUS MACHINERY & EQUIPMENT



Jet SBR30N shear/ brake/ roll combo; 20 gauge x 30" capacity, stock 754031



National power squaring shear; 52" opening, back gauge



National V6-7212 box & pan brake; 12 gauge capacity, 73" mouth, serial 225-498



Automated Productions 225/4200 bar feed; 1994 vintage, serial 225-9502



SMW Spacesaver 12.65 autoloader bar feed



LNS Quickload bar feed; 1997 vintage, serial 24278



Ingersoll Rand SSR EPE 200 2S rotary air compressor; 200 hp, 125 psig rated operating pressure, 990 cfm capacity, 78,870 total hours & 60238 load hours, serial FF1951V00169



Sunnen MBB625D precision honing machine; spindle speed 300 -800 rpm's, serial 13674



McKenzie floor type chip conveyor separator; serial L2552



KPT Diaset D350 toolset measuring system



Roto Finish 3608 tumble finisher; 40" diameter, Spiratron Extended Range series, serial ER-0203S-95-C14



Nilfisk Advance 4800 floor sweeper/scrubber; serial 1890810

# MISCELLANEOUS MACHINERY & EQUIPMENT



Drilling & Tapping machine; custom made, consists of Ettco model 500 and model 4 drills, ARO model 47276 twin spindle with rotary table



Fairbanks truck weigh scale; 130' x 69', monitored by camera, (2) exterior displays, (8) load cells



assorted brands and hp's of electric motors

## AUCTION TERMS AND CONDITIONS:

### 1. Payment Terms:

- a. Balance of Bidder's invoice may be paid by cash, cashier's check, wire transfer, or company check. All Checks must be accompanied by a letter from the payer's bank guaranteeing unqualified payment to STUART B. MILLNER & ASSOCIATES (hereinafter "SBMA"). (A \$25.00 fee shall be assessed to buyer for all returned checks).
- b. Payment is due in full upon receipt of invoice. If payment is not received within 24 hours of the conclusion of the auction Buyer's invoice will be voided, and all items will be forfeited with NO REFUND of deposit or payment. All legal fees, collection fees and any other charges arising from nonpayment will be paid by the buyer
- c. All methods of payment shall be made payable to STUART B. MILLNER & ASSOCIATES.
- d. Wire-transfer instructions are available at the registration desk or by calling the SBMA office at 636-744-1400
- e. No purchases may be removed until complete settlement is made with cleared funds. Buyer is responsible for the complete removal of Buyer's purchase(s).
- f. Each buyer shall be responsible for payment of any city, county and /or state sales tax that may apply.
- g. Buyer is entirely responsible for any customs or duty issues and/or payments
- h. A 15% Buyer Premium applies to all sales. An 18% Buyers Premium applies to all online sales.

### 2. CONDITIONS OF SALE:

- a. All items up for auction will be sold to the highest bidder in accordance with the Auctioneer's Customary Terms of Sale.
- b. If an item shall become non-deliverable for any reason, SBMA shall not, in any event, be liable for non-delivery, or for any other matter or thing, to any Buyer of any lot, other than for the return to the Buyer of monies actually paid to SBMA for said lot, should the buyer be entitled thereto.
- c. SBMA expressly reserves the right to determine the manner of conducting the auction and to sell items by individual or group lots, as it may deem appropriate.
- d. The Auctioneer and Seller disclaim all warranties, expressed or implied, about the merchantability of the items and their fitness for a particular purpose.
- e. SBMA assumes no liability for error, omissions, accurate weights or measures, additions and/or deletions in this brochure or auction/lot book and all assets are

Sold "As is, Where Is." Items offered may or may not be sold as described and/or photographed in this brochure.

- f. Buyer/rigger is responsible for all waste/oil/substance in the removal of assets, along with all spills that may occur during the removal process.
- g. All sales are made "As Is, Where Is" and Buyer acknowledges having inspected the property and to be satisfied with same prior to bidding. Buyer is solely relying upon its own expertise in choosing to make any purchase.
- h. All sales are FINAL.
- i. The Certificate of insurance is required to use motorized equipment or torching equipment on premises for lot removal.
- j. Buyer/rigger MUST bring a copy of its liability insurance to the premises (onsite) and fax a copy to the offices of SBMA. The insurance certificate must list SBMA and Seller as additional insureds.
- k. All items MUST be paid and picked-up by the last checkout date or they will be forfeited with no refund of deposit or payment, unless special arrangements have been made.
- l. Stuart B. Millner & Associates shall not be responsible for any property or bodily damages, howsoever caused, arising from the pickup or transport of the property, and all risks relating thereto are fully assumed by Buyer to the complete exoneration of SBMA. Buyer/rigger waives any and all claim it may have for any damages, including actual and punitive, whether caused by negligence, willful misconduct or otherwise, and assumes all risk related to the removal of its purchases.
- m. Buyer will comply with all United States of America Export Administration Regulations, the Export Administration Act or any order, license, License Exception, or other authorization issued there under.
- n. For all lots sold as scrap, weight will be estimated until actual weight is determined during checkout. Once actual weight is confirmed, Buyer will pay the balance due, if any, or Buyer will be issued a refund, if due.
- o. Buyer acknowledges that it is not relying upon any statements or information obtained from either SBMA or Seller in choosing to make a purchase.

## DRIVING DIRECTIONS

Syracuse Hancock International Airport  
1000 Col Eileen Collins Blvd, Syracuse,  
NY 13212

- 1) Get on I-81 S in Salina 2) Follow i-81 S & NY-13 S to Old Ithaca Rd in Horseheads North 3) Follow Old Ithaca Rd to your destination in Horseheads 4) exit the traffic circle onto Old Ithaca Rd 5) Turn right 6) Turn right Destination will be on the right

224 N Main St  
Horseheads, NY 14845

## ACCOMMODATIONS

### Holiday Inn Express

2666 Corning Rd, Horseheads, NY 14845  
(607) 739-3681

### Hampton Inn Elmira / Horseheads

51 Arnot Rd, Horseheads, NY 14845  
(607) 795-3333

### Country Inn & Suites

E Mall Rd, Horseheads, NY 14845  
(607) 739-9205

**REGISTER TO BID ONLINE AT**



102 East Springfield Ave.  
Union (St. Louis), MO 63084  
[www.sbmac.com](http://www.sbmac.com)

**FOR QUESTIONS ABOUT  
THIS SALE CALL OUR  
OFFICES AT  
636-744-1400**



## **A ONE OF A KIND OFFERING OF ACME GRIDLEY SCREW MACHINES**

- ( 16 ) Acme Gridley Model 1 RAN 6 Spindle Screw Machine; max capacities = round @1", square @ 45/64" and hex @ 55/64", range of spindle speeds 239 – 2320 rpm's, 15 hp motor.
- (8) Acme Gridley Model 1RA 6 Spindle Screw Machine; max capacities = round @1", square @ 45/64" and hex @ 55/64", range of spindle speeds 239 – 2320 rpm's, 15 hp motor.
- ( 4 ) Acme Gridley Model 1 5/8 RBN 8 Spindle Screw Machine; max capacities = round @ 1 5/8", square @ 1 5/32" and hex @ 1 13/32", range of spindle speeds 168 – 1529 rpm's, 30 hp motor.
- (1) Acme Gridley Model 2 5/8 RB 6 Spindle Screw Machine; round @2 5/8", square @ 1 27/32" and hex @ 2 17/64", range of spindle speeds 101 – 1085 rpm's, 40 hp motor.
- (3) Acme Gridley Model 2 5/8 RBN 8 Spindle Screw Machines; max capacities = round @ 2 5/8", square @ 1 27/32" and hex @ 2 17/32", range of spindle speeds 168 – 1529 rpm's, 40 hp motor.
- (2) Acme Gridley Model 1 1/4 RB 8 Spindle Screw Machines; max capacities = round @ 1 1/4", square @ 3/8" and hex @ 1 3/32", range of spindle speeds 168 – 1529 rpm's, 30 hp motor.

**Sale Managed & Conducted**



**In Conjunction with:**

