

ONLINE AUCTION

Due to Owner Retiring



Canadian Carpet & Cushion Inc.

Complete Carpet Manufacturing Facility

19877 Bathurst St., Holland Landing, ON

700+ LOTS!



SELLERS CARPET SHEAR



FIPI F.79M HYDRAULIC TRAVELLING HEAD CLICKER PRESS



**(12+) AVAILABLE
UP TO 7,500LB CAP.**

PARTIAL VIEW OF TCM, YALE, TOYOTA, CLARK, KOMATSU, LANSING, CROWN FORKLIFTS



(5) AVAILABLE

PARTIAL VIEW OF RUG TUFTING MACHINES

CLOSES: Tuesday June 1, 11:00 AM (ET)

Inspection: Monday May 30, 9AM – 4PM or By Appointment



INFINITY Asset Solutions

- AUCTIONS
- LIQUIDATIONS
- FINANCING
- APPRAISALS

905.669.8893
infinityassets.com

Bid Online Via  BidSpotter.com

COMPLETE CARPET MANUFACTURING LINE



Carpet Manufacturing Line Consisting of: Traversing Butt Seamer, Unwind, J-Box, Tendon Frame, (3) Coaters, Electric & Tie Rod Heaters, (3) Section Dryer, Embosser, Accumulator, **SELLERS** Shear, J-Box, Unwind, Feeder, Conveyor Table w/ Slitter, Rewind/Rollup

Note: TO BE SOLD BOTH ENBLOC AND PIECEMEAL



CARPET MACHINERY

(5) Rug Tufting Machines, Perforator, (3) Air Entanglers, (3) Beamers, (7) Formers

DIE CUTTING PRESSES

FIPI F.79M Hydraulic Travelling Head Clicker Press, s/n 3414

PEDERSON 1602M-16 Die Cutting Press, s/n 178246

SASPOL Die Cutting Press

NEMETH ENGINEERING AUTO TRIM 4080 High Frequency Press, s/n 72584-2, 40" x 80", 50KW



Bid ONLINE at

BidSpotter.com

VIEW OF RUG TUFTING MACHINES, PERFORATORS, AIR ENTANGLERS, BEAMERS, FORMERS, ETC.



FIPI F.79M HYDRAULIC TRAVELLING HEAD CLICKER PRESS



PEDERSON 1602M-16 DIE CUTTING PRESS



SASPOL DIE CUTTING PRESS



NEMETH ENGINEERING AUTO TRIM4080 HIGH FREQUENCY PRESS

50KW



(12) AVAILABLE

UP TO 7,500LB CAP.

PARTIAL VIEW OF TCM, YALE, TOYOTA, CLARK, KOMATSU, LANSING, CROWN FORKLIFTS



GENIE Z30/20N BOOM LIFT



CASE 1845C SKID STEER



(11) AVAILABLE



PARTIAL VIEW OF UNION SPECIAL, PFAFF, JUKI, BENZ, SINGER SEWING MACHINES & SERGERS



PARTIAL VIEW OF ELECTRIC DIE LIFTS, PALLET JACKS, STORAGE TRAILERS



SEWING MACHINES

(11) UNION SPECIAL, PFAFF, JUKI, BENZ, SINGER Sewing Machines & Sergers

ROLLING STOCK

(12) TCM, YALE, TOYOTA, CLARK, KOMATSU, LANSING, CROWN Forklifts Up to 7,500lb Cap.

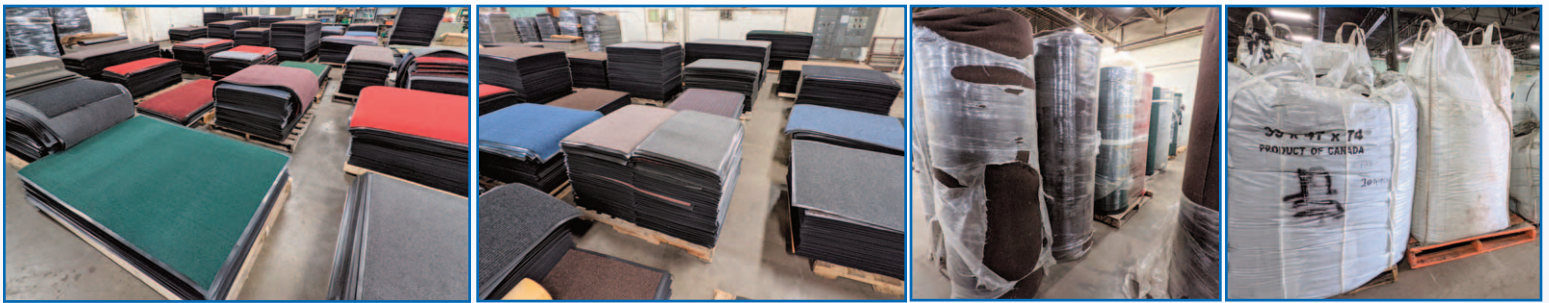
HYSTER W40Z Electric Pallet Jack, 4,000lb Cap.

GENIE Z30/20N Boom Lift

CASE 1845C Skid Steer

Electric Die Lifts, Pallet Jacks, Electric Battery Transfer Lift
53' Storage Trailers

Bid ONLINE at



PARTIAL VIEW OF FINISHED PRODUCT & RAW MATERIALS



PARTIAL VIEW OF PLANT SUPPORT EQUIPMENT

PLANT SUPPORT

Resin Grinding Line, **ECONOMY** 6031A Baler, **ATLAS COPCO**, **SWAN**, **CHAMPION**, **DEVILBISS** Air Compressors, **HURST** Boiler, Manual Cutting Table w/ Electric Cutters, Pipe Threader, **BERG** Chillers, Mixers, Hydraulic Power Packs, Pallet Racking, Scrap Metal, Transformers, Electrical, Stainless Steel Tanks, Air Conditioners, Gas Heaters, Motors & Blowers, Floor Scales, Job Boxes, Power & Hand Tools, Drill Presses, Lathes, Saws, Tool Storage Cabinets, Parts Washer, Stitches, Welders, Liquid Storage Totes, **LARGE QTY. OF** Finished Inventory & Raw Materials, Office Equipment and Much More!

TERMS OF SALE

Payment: All payments must be in Cash, Certified Funds, Wire Transfers, or Company Cheques, which must be accompanied with a bank letter guaranteeing irrevocable payment to Infinity Asset Solutions Inc. Invoices up to \$2,000 can be paid by Visa, Mastercard or Interac.

All bidders must register on Bidspotter by Monday May 30, 5pm.

A 18% buyers premium will be added to all Online purchases.

A \$2,000 refundable security deposit is required upon online registration.

A 25% deposit is required at time of purchase, balance due by Wednesday June 2, 2021, 4pm. **NO EXCEPTIONS.**

All goods are sold "As Is, Where Is", **ALL SALES ARE FINAL.** All subject to prior sale. Complete terms and conditions including removal procedures, are available on our website.

REMOVAL TIMES

All Items by Friday June 25, 2021.

No items may be removed during auction. **NO EXCEPTIONS.**

DIRECTIONS: To 19877 Bathurst St., Holland Landing, ON L9N 1G8 **Toronto Pearson International Airport** (Approx 47 min 60.2 km)
Exit airport get on Get on ON-409 E. Take ON-400 N to Davis Dr W/ON-9 E in Kettleby. Take exit 55 from ON-400 N. Continue on Davis Dr W. Drive to York Regional Rd 38. Destination will be on the right.

This brochure is meant merely as a guide. Infinity Asset Solutions makes no guarantee, expressed or implied, as to the accuracy of the information in this brochure. Buyers should inspect the goods beforehand to satisfy themselves.



AUCTIONS • LIQUIDATIONS FINANCING • APPRAISALS

63 Maplecrete Road, Concord, Ontario L4K 1A5 Canada
infinityassets.com • Tel: (905) 669-8893