



PERFECTION
Industrial Sales

LIVE WEBCAST AUCTION

Former Assets of



SALE 2: MT. GILEAD LOCATION MAJOR PLASTIC INJECTION MOLDING FACILITY & REAL ESTATE

**Including: (24) Nissei, Mitsubishi, Van Dorn, Toshiba & Cincinnati Milacron
Horizontal & Vertical Injection Molding Machines Up to 1,000 Ton Capacity**



**LATE MODEL ROBOTS,
SECONDARY EQUIPMENT,
TOOLROOM,
MATERIAL HANDLING,
PLANT SUPPORT,
& MISCELLANEOUS
PLUS REAL ESTATE**



Real Estate For Sale by Auction – See Page 7 for Details

Sale Date: Tuesday, July 16, Beginning at 10:00 AM EDT

Location: 420 Douglas Street, Mt. Gilead, Ohio 43338

Inspection: Monday, July 15, from 9:00 AM to 4:00 PM or by Appointment

Online Bidding Available Through

BidSpotter.com



PERFECTION
Industrial Sales

Perfection Industrial Sales
ph 847-427-3333 • fax 847-427-8884
www.perfectionindustrial.com

Sale is Being Held in Conjunction With:



INFINITY
Asset Solutions
infinityassets.com 905.669.8893

AUCTIONS • LIQUIDATIONS • FINANCING • APPRAISALS

M-N-A
MACHINERY NETWORK AUCTIONS

AUCTIONEERS | APPRAISERS | LIQUIDATIONS | FINANCING
888-998-4440
EMAIL: info@machinerynetworkauctions.com
www.machinerynetworkauctions.com

(24) INJECTION MOLDERS FROM 120 TON – 1,000 TON



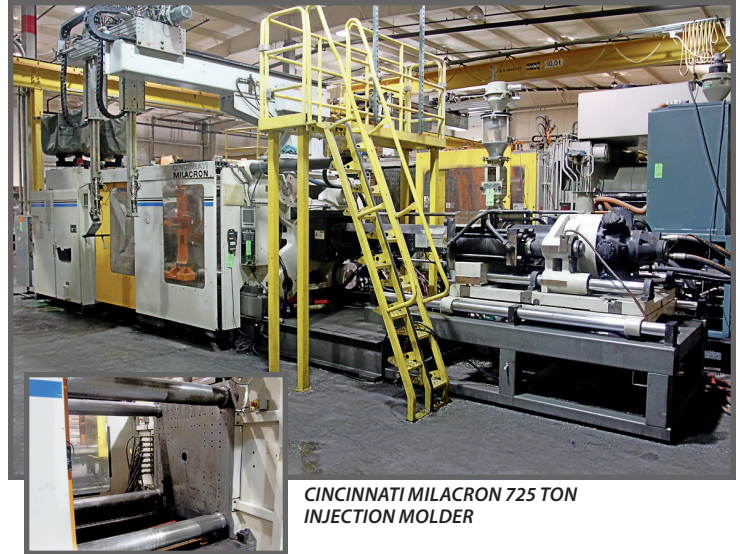
VAN DORN 1,000 TON
INJECTION MOLDER



MITSUBISHI 950 TON
INJECTION MOLDER



CINCINNATI MILACRON 850 TON
INJECTION MOLDER



CINCINNATI MILACRON 725 TON
INJECTION MOLDER



NISSEI 720 TON
INJECTION MOLDER



VAN DORN 700 TON
INJECTION MOLDER

Inspection: Monday, July 15, from 9:00 AM to 4:00 PM or by Appointment

To discuss your requirements for an auction, please call Perfection Industrial **847.427.3333**

(24) INJECTION MOLDERS FROM 120 TON – 1,000 TON



VAN DORN 650 TON
INJECTION MOLDER



CINCINNATI MILACRON 600 TON
INJECTION MOLDER

Sale Date: Tuesday, July 16, Beginning at 10:00 AM EDT

SUMMARY SPECS OF INJECTION MOLDERS OVER 500 TON

Asset #	Year	Manufacturer	Model	Ton	Shot	Tie Bar Dist.	Control	Serial #	Robot Make	Robot Model
MG-22	1996	VAN DORN	1000-HP-260F	1,000	260	44" x 44"	PATHFINDER 2500	466	HUSKY	MTE-50
MG-20	1985	VAN DORN	1000-RS-165F-L.P.	1,000	165	58" x 42"	PATHFINDER 5000	182	MARK 2 AUTOMATION	600EL2
MG-21	1992	MITSUBISHI	950MGW240	950	165	51.2" x 47.2"	MITSUBISHI	G824226	MARK 2 AUTOMATION	600EL2
MG-18	1996	CINCINNATI MILACRON	MH850-116	850	116	45.3" x 37.4"	CAMAC 486	H08A0496028	MARK 2 AUTOMATION	600EL2
MG-19	1995	CINCINNATI MILACRON	VL725-85	725	85	37.4" x 37.4"	CAMAC 486	H17A0195010	MARK 2 AUTOMATION	600EL2
MG-8	2001	NISSEI	FV9100310	720	107	43" x 43"	NISSEI NC9300T	S91V004	WITTMANN	W633
MG-3	1994	VAN DORN	700H-RS-60F	700	60	36.5" x 36.5"	PATHFINDER	673	MARK 2 AUTOMATION	600EL3S
MG-5	1994	VAN DORN	650-RS-HT-60F	650	60	36" x 36"	SIEMENS SIGMATEK	118	YUSHIN	NETLINER YAII-600SL-1S.5
MG-4	1994	CINCINNATI MILACRON	VH-600-85	600	85	34.3" x 34.3"	CAMAC VEL	H06A0194002	YUSHIN	WEBLINER RAII-a-400 SLL-13
MG-14	1993	VAN DORN	500-RS-60F-HT	500	60	32.5" x 32.5"	PATHFINDER	274	MARK 2 AUTOMATION	480EL2
MG-12	1990	VAN DORN	500-HT-RS-60F	500	60	32.5" x 32.5"	PATHFINDER 5000	159	MARK 2 AUTOMATION	480EL2



VAN DORN 500 TON
INJECTION MOLDER



VAN DORN 500 TON
INJECTION MOLDER

View our current auction schedule at www.perfectionindustrial.com

(24) INJECTION MOLDERS FROM 120 TON – 1,000 TON

SUMMARY SPECS OF INJECTION MOLDERS UNDER 500 TON

Asset #	Year	Manufacturer	Model	Ton	Shot	Tie Bar Dist.	Control	Serial #	Robot Make	Robot Model
MG-15	1990	CINCINNATI MILACRON	VISTA 400-54	440	54	29.25" x 29.25"	SIGMATEK	4039A61/90-7	MARK 2 AUTOMATION	480EL2
MG-7.5	1993	VAN DORN	400-RS-48F-HT	400	48	28.1" x 28.1"	SIGMATEK	348		
MG-10	1998	TOSHIBA	ISG390-V10-27B	390	62	28.7" x 28.7"	INJECTVISOR V-10	867205	MARK 2 AUTOMATION	
MG-6	1996	mitsubishi	390MJ-60	390	60	26.74" x 26.74"	MITSUBISHI	3G306058		
MG-7	1994	MITSUBISHI	390MJ-60	390	60	26.74" x 26.74"	MITSUBISHI	2G306524	MARK 2 AUTOMATION	
MG-13	1996	MITSUBISHI	300-HT-30	300	30	25" x 25"	SIEMENS	2817		
MG-11	1994	VAN DORN	300-RS-30F-HT	300	30	25" x 25"	PATHFINDER	2351		
MG-2.5	1995	VAN DORN	230-HT-20	230	20	22.06" x 22.06"	PATHFINDER 4500	826	MARK 2 AUTOMATION	360EL3S
MG-16	1995	VAN DORN	230-HT-20F	230	20	22.06" x 22.06"	PATHFINDER 2500	839	MARK 2 AUTOMATION	360EL3S
MG-2	1999	MITSUBISHI	120MJII-10	120	10	16.14" x 16.14"	MITSUBISHI	3S10C104	MARK 2 AUTOMATION	320ES
MG-4	2001	MITSUBISHI	120MJII-10	120	10	16.14" x 16.14"	MITSUBISHI	3J10C082		



TOSHIBA 390 TON INJECTION MOLDER



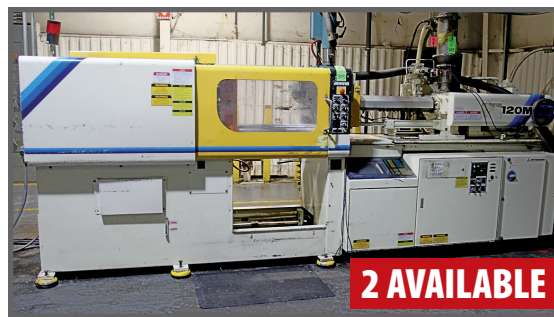
MITSUBISHI 390 TON INJECTION MOLDER



HUSKY MTE-50 3-AXIS SERVO ROBOT



VAN DORN 300 TON INJECTION MOLDER



MITSUBISHI 120 TON INJECTION MOLDER



MARK II 480EL2 3-AXIS SERVO ROBOT



MARK II 600EL3S 3-AXIS SERVO ROBOT



MARK II 360EL3S 3-AXIS SERVO ROBOT



YUSHIN NETLINER YAII-600SL-1S.5 3-AXIS SERVO ROBOT



MARK II 600EL2 3-AXIS SERVO ROBOTS

Online Bidding Available Through

BidSpotter.com

*This brochure is only a partial listing.
Please visit our website www.perfectionindustrial.com
for more detailed listings and photos.*

View our current auction schedule at www.perfectionindustrial.com

(16) ROBOTS – SEE INJECTION MOLDER CHARTS, LOADING & MIXING SYSTEMS

SUMMARY SPECS OF VERTICAL CLAMP INJECTION MOLDERS

Asset #	Year	Manufacturer	Model	Ton	Shot	Tie Bar Dist.	Control	Serial #
MG-9	2001	MIR	RMPV-BS520-1	500	64	29.5" x 29.5"	DB-96	13081
MG-17	1980	ENGEL	ES1500-350-VHS	385	45	24" x 24"	ENGEL	1435-385

(38) Molding Dies of Various Size



YUSHIN WEBLINER RAI-A-400 SLL-13 3-AXIS SERVO ROBOT

VARIOUS ROBOTS

– See Injection Molder Charts

Note: Robots Will Be Sold Separate From Machines



MIR 500 TON – SHOT OF INJECTION UNIT



MIR 500 TON VERTICAL CLAMP INJECTION MOLDER

(16) ROBOTS

2008 YUSHIN NETLINER YAII-600SL-1S.5 3-AXIS SERVO ROBOT, S/N A122661-V

2006 YUSHIN WEBLINER RAI-A-400 SLL-13 3-AXIS SERVO ROBOT, S/N 3306885006

WITTMANN W633 3-AXIS SERVO ROBOT, S/N 5332

MARK II AUTOMATION 600EL3S 3-AXIS PC SERVO ROBOT, S/N 21211

(2) MARK 2 AUTOMATION 360EL3S 3-AXIS PC SERVO ROBOT

1997 HUSKY MTE-50 3-AXIS SERVO ROBOT, S/N 13705

(4) MARK II AUTOMATION 600EL2 3-AXIS ROBOT, S/N 20795

(3) MARK II AUTOMATION 480EL2 3-AXIS ROBOT, S/N 21267

(2) MARK II AUTOMATION 3-AXIS ROBOT, S/N 21200

MARK II AUTOMATION 3-AXIS ROBOT, S/N 21187



AEC MATERIAL DISTRIBUTION SYSTEM



CONAIR FRANKLIN VACUUM LOADING SYSTEM



2002 NOVATEC MCS-216 MATERIAL DISTRIBUTION SYSTEM



DRI-AIR APD-9 DRYER



ADVANTAGE PTS-800-3P CHILLER



TEMPERATURE CONTROLLERS & GRINDER



LOADING & MIXING SYSTEMS

FOREMOST CENTRAL LOADING SYSTEM, w/(1) 10-Station Distribution Panel, (1) Model VCF-07A-20 Vacuum Power Unit, w/Sutorbilt 3MVF Blower, S/N 24386, (1) Conair Model 108369-1 Vacuum Power Unit, S/N 13828, Roots Model 45-U-RAI 7.5 HP Universal Blower, S/N 90-D-12758, (1) Conair Canister Filter, (1) Una-Dyn 600 LB Capacity Hopper, w/Conair Vacuum Receiver

MAGUIRE WSB-220-CF WEIGH SCALE BLENDER W/ CONCENTRATE FEEDER, S/N N/A, 2-Compartment Hopper, w/(2) Conair Vacuum Receivers, Programmable Controller, Mounted on Steel Stand

MATERIAL STORAGE/MIXING SYSTEM, w/(2) Surge Bins Each, w/Foremost Vacuum Receivers, 4' x 4' x 4' Bin Size, Elevated Steel Stand, (1) Mixer/Blender, w/(2) Foremost Vacuum Receivers, Common Collection Hopper, Side Mounted Additive Feeder Hopper, FMC Shaker Pan, Cone Bottom Blending Hopper, AC Vibrator, Gravity Discharge, Gaylord Container Loading Stand, (5) Plastic Material Transfer Carts and Control Panel w/Koyo Direct Logic 205 PLC, AVG EZ-Series Touch Screen Interface

2002 NOVATEC MCS-216 MATERIAL DISTRIBUTION SYSTEM, S/N 172529-3293, 16-Station Microprocessor Control Panel, Vacuum Power Unit w/Roots 33-U-RAI Universal Blower, S/N 0207948020, 3 HP, In-Line Filter

AEC MATERIAL DISTRIBUTION SYSTEM, w/Model VAC 7.5/12, 7.5 HP Vacuum Power Unit, S/N 90F479, Model FC-15 In-Line Filter, Control Panel w/Koyo Direct Logic 205 PLC, AVG EZ-Series Touch Screen Interface

CONAIR FRANKLIN VACUUM LOADING SYSTEM, w/Roots Model 45-U-RAI, 7.5 HP Universal Blower, S/N 95G-68134, Conair Selectronic 4-Pump Control and In-Line Filter

(4) **CARBON STEEL SILO**, Approx. 12' Diameter x 32' Height, Welded

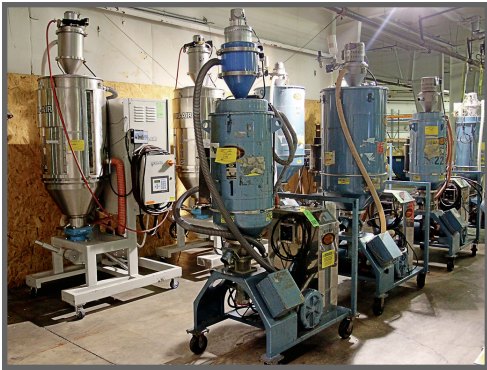


CARBON STEEL SILOS

4 AVAILABLE

To discuss your requirements for an auction, please call Perfection Industrial 847.427.3333

(10) MATERIAL DRYERS, (48) TEMPERATURE CONTROLLERS, (13) GRANULATORS, WATER SYSTEMS



VIEW OF MATERIAL DRYERS

(10) MATERIAL DRYERS

UNA-DYN DHD-6 DEHUMIDIFYING DRYER, S/N 292686.01-0508, Microprocessor Control w/1,100 LB Capacity Solid Cone Drying Hopper and Conair Duraload Vacuum Receiver

CONAIR CS-D200 PORTABLE DRYER, w/CS Carousel Dryer Microprocessor Control, Dri-Air Dryer Hopper 32" x 32" x 60" and Conair Vacuum

(2) DRI-AIR APD-9 PORTABLE DRYERS, w/Advanced Microprocessor Dryer Control, Model RH400, 400 LB Capacity S.S. Drying Hopper and Dri-Air Vacuum Loader

(2) UNA-DYN UDC-100 PORTABLE AUTO MINI-DRYERS, w/Microprocessor Control, 400 LB Modular Drying Hopper and Vacuum Loader

(2) UNA-DYN UDC-55 PORTABLE AUTO MINI-DRYERS, w/Microprocessor Control, 100 LB Modular Drying Hopper and IMS Vacuum Loader

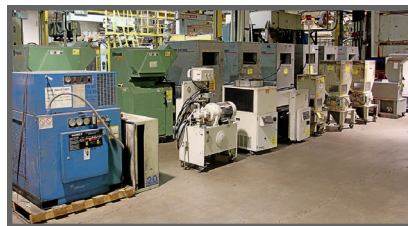
(2) UNA-DYN UDC-30 PORTABLE AUTO MINI-DRYERS, w/Microprocessor Control, 200 LB Modular Drying Hopper and Vacuum Loader



MATERIAL DRYER



AEG G1628 30 HP PORTABLE GRANULATOR



VIEW OF GRANULATORS

WATER SYSTEMS

ADVANTAGE PTS-800-3P WATER COOLING TOWER RECIRCULATION SYSTEM, S/N 29637, 100 PSI Max. Operating Pressure, (2) 20 HP Recirculation Pumps and PTS Microprocessor Control Panel.

CARRIER 30HK060630 CHILLER, S/N P-349171, (2) 30 Ton Compressors, 2 x 45 LB R-22 Ref

CARRIER 30HS060-B150 CHILLER, (2) 30 Ton Compressors, R-22 Ref. w/72" Diameter x 84" Stand Mounted Horizontal Tank

CONAIR WATER COOLING TOWER RECIRCULATION SYSTEM, S/N N/A, w/Main Control Panel, (1) Tower Controller, (1) System Alarm Panel, (1) 72" x 72" x 60" High Water Holding Reservoir and (2) 20 HP Recirculation Pumps

BALTIMORE AIR COIL 200 TON WATER COOLING TOWER, Model and S/N N/A, Mounted On Steel Platform

MARLEY 80 TON WATER COOLING TOWER, S/N 73850-1/B22154A/4851, Mounted On Steel Platform

(2) CARRIER 09DK-044-600 3-ZONE AIR COOLED CONDENSORS

(2) CARRIER 09DC034520 3-ZONE AIR COOLED CONDENSORS

240 GALLON VERTICAL AIR RECEIVING TANK

DONALDSON ULTRA AIR COMPRESSED AIR OIL/WATER SEPARATOR

(48) TEMPERATURE CONTROLLERS

(5) 2012 TEMPTTEK VT-275-LS VETERAN LS SERIES PORTABLE WATER TEMPERATURE CONTROLLERS

(14) BUDZAR BWA & BTU SERIES TEMPERATURE CONTROLLERS

(3) COOLING TECHNOLOGY TCII-2-9KW PORTABLE DUAL ZONE TEMPERATURE CONTROLLERS

(4) COOLING TECHNOLOGY TCII-2-3/4-9KW PORTABLE DUAL ZONE TEMPERATURE CONTROLLERS

(2) COOLING TECHNOLOGY TCII-2-12-2 PORTABLE DUAL ZONE TEMPERATURE CONTROLLERS

(20) YUDO, KONA-ATHENA, DME, & IMS HOT RUNNER TEMPERATURE CONTROLLERS, Including 12-Zone, 8-Zone and 5-Zone

(13) GRANULATORS

AEG G1628 30 HP PORTABLE GRANULATOR, S/N 02L05289, w/16" x 28" Front Load Opening, On-Board Model F512 3 HP Discharge Blower, Stationary Cyclone Receiver Stand and 3-Bag Dust Collection Unit

POLYMER SYSTEMS 1620-SIL 30 HP PORTABLE GRANULATOR, S/N 3552-94, w/16" x 20" Front Load Opening, Insulated Sound Panels, On-Board 3 HP Discharge Blower and Stand Mounted Cyclone Receiver

(2) 2005 RAPID R-18 RAGE 25 HP PORTABLE GRANULATORS, w/18" x 14" Front Load Opening, 8" x 8" Side Load Opening

(6) POLYMER SYSTEMS 1120-SIL 25 HP PORTABLE GRANULATORS, w/11" x 20" Front Load Opening

(2) POLYMER SYSTEMS 912-SPL 7.5 HP PORTABLE GRANULATORS, w/9" x 12" Top Load Opening

NISSUI SA-24 2 HP PORTABLE GRANULATOR, S/N SA3400517, w/22" x 22" Top Load Opening



VIEW OF WATER SYSTEMS



VIEW OF TEMPERATURE CONTROLLERS



(20) YUDO, KONA-ATHENA, DME, & IMS HOT RUNNER TEMPERATURE CONTROLLERS



NITROGEN SYSTEM



ATLAS COPCO GAU410 40 HP ROTARY SCREW AIR COMPRESSOR

To discuss your requirements for an auction, please call Perfection Industrial 847.427.3333

(4) AIR COMPRESSORS & NITROGEN SYSTEM, INSPECTION EQUIPMENT, (2) OVERHEAD CRANES, (7) FORKLIFTS



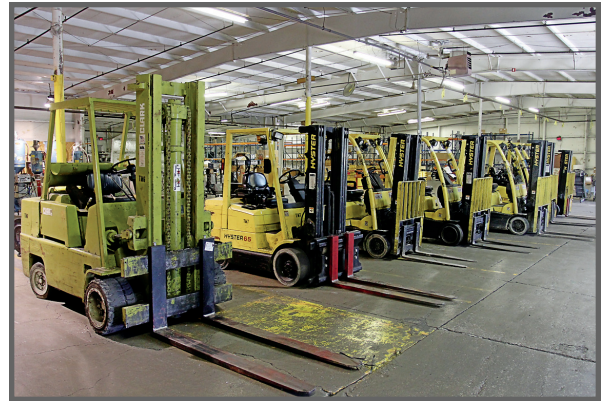
1994 ZEISS C400-1532-12
COORDINATE
MEASURING MACHINE



RAM OPTICAL
INSTRUMENTATION DATA
STAR-200 OPTICAL VIDEO PROBE



CHATILLON LTCM-100
20" DIGITAL TENSILE TESTER



VIEW OF FORKLIFTS

(4) AIR COMPRESSORS & NITROGEN SYSTEM

KAESER BS-60 50 HP ROTARY SCREW AIR COMPRESSOR

KAESER SK-26 20 HP ROTARY SCREW AIR COMPRESSOR

ATLAS COPCO GAU410 40 HP ROTARY SCREW AIR COMPRESSOR

20 HP ROTARY SCREW AIR COMPRESSOR

KAESER KRD35 REFRIGERATED COMPRESSED AIR DRYER

NITROGEN SYSTEM – Complete System to Include Nitrogen Compressors, Cylinder Racks, Touch Screen PLC Control

AIR PRODUCTS 3040 PRISM NITROGEN GAS SYSTEM

2005 BAUER G120-E3/460 NITROGEN GAS COMPRESSOR

BAUER G15.1V-10E3 NITROGEN GAS COMPRESSOR

BAUER HC4500-6 6-BOTTLE NITROGEN GAS CYLINDER RACK

BAUER 2-BOTTLE NITROGEN GAS CYLINDER RACK

(2) BAUER NCU2-V2 PORTABLE NITROGEN GAS CONTROL UNIT

INSPECTION EQUIPMENT

1994 ZEISS C400-1532-12 COORDINATE MEASURING MACHINE, S/N CMM950602636, DCC System Drive w/Joystick Control Pad, Renishaw M1HB+ Probe, Granite Surface Plate 46" x 28" x 6", C90HP Control System, HP Tower Computer and Samsung 17" Color Monitor

RAM OPTICAL INSTRUMENTATION DATA STAR-200 OPTICAL VIDEO PROBE, S/N RDS2001011, w/Auto Check Control System, 10" x 7" Viewing Area, 13" x 18" Work Surface Area, (1) Granite Surface Plate 26" x 20" x 2", (1) Granite Surface Plate 36" x 24" x 6", Optiquest 19" Color Monitor, Epson FX-870 Printer, Wilkerson Air Dryer and Metro Wire Shelf Cart

CHATILLON LTCM-100 20" DIGITAL TENSILE TESTER, S/N 03-04-10-02

ALSO AVAILABLE: Granite Tables, Gages, Micrometers, Tensile Testers, Height Gages, Pin Gages and More

(2) OVERHEAD CRANES

10 TON KONE FREE STANDING BRIDGE CRANE, S/N 5642042, w/Kone FEM-1AM 10 Ton Capacity Bottom Riding Cable Hoist, Approx. 40' Span, Remote Radio Control w/Free Standing Structure, Approx. 95' Length (5-Sets Upright Posts)

10 TON FREE STANDING BRIDGE CRANE, w/Demag 10 Ton Capacity Top Riding Single Girder Cable Hoist Bridge Crane, 18' Span, 6-Way Power Pendant, 4-Post Free Standing Structure, Approx. 30' Length (12-1/2' Height To Top Of Runway Rail)

NOTE: Overhead Cranes may be sold with the Real Estate, subject to change.

(7) FORKLIFTS

CLARK C500-135 13,500 LB CAPACITY LP FORKLIFT, S/N 915-16-4480, 134" Lift, 2-Stage Mast, 72" Forks and Solid Tires

HYSTER S65XM 5,750 LB CAPACITY LP FORKLIFT, S/N D187V-18700X, 181.9" Lift, 3-Stage Mast, Side Shift, 60" Forks and Solid Tires

HYSTER S30XM 2,750 LB CAPACITY LP FORKLIFT, S/N D010H02005Y, 171.3" Lift, 3-Stage Mast, Side Shift, 48" Forks and Solid Tires

(4) HYSTER S30FT 2,700 LB CAPACITY LP FORKLIFT, 187" Lift, 3-Stage Mast, Side Shift, 48" Forks and Solid Tires

ELECTRIC SCISSOR LIFT, w/84" x 40" Platform

SELECTION OF TOOL ROOM EQUIP.: Extension Jib Attachments, Forks, Mast Guards, Work Platforms, Pallet Racking, Belt Conveyors, Shop Fans, Ladders, Work Benches, Office Furniture and Much More

MT. GILEAD REAL ESTATE WILL BE OFFERED FOR SALE BY AUCTION AT 1:00 P.M.

LAND: 7.903 Acres (725' Frontage) BUILDING: 61,920 Sq. Ft. Building (7,500 Sq. Ft. Office and Lab.)



BRIDGE CRANES – Fully Serviced Warehouse Consisting of (2) 10 ton Bridge Cranes.

WAREHOUSE CAPACITY– Warehouse Ceiling 14' to 26' Clearance, (6) Dock Level and (2) Drive-In Access Doors

ALL INTERESTED PARTIES MUST PRE-REGISTER TO QUALIFY TO BID AT LEAST 48 HRS. PRIOR TO THE AUCTION DATE OF JULY 16. A BANK LETTER AND A WIRE DEPOSIT OF \$10,000.00 IS REQUESTED TO PARTICIPATE.

Please contact Mr. Adam Stevenson, (630) 857-6615, or by email adam@perfectionindustrial.com

View our current auction schedule at www.perfectionindustrial.com



PERFECTION Industrial Sales

Perfection Industrial Sales – 2550 Arthur Ave., Elk Grove Village, IL 60007
888.241.4577 (U.S. & Canada) – 847.427.3333 (outside U.S. & Canada) – 847.427.8884 (fax)
www.perfectionindustrial.com
Mr. John Sharpe, Ohio License #2002000001



Presorted
First Class Mail
U.S. Postage
PAID
Eugene, Oregon
Permit No. 17

Including: (24) Nissei, Mitsubishi, Van Dorn, Toshiba & MIR Horizontal & Vertical Injection Molding Machines Up to 1,000 Ton Capacity, Plus Real Estate

LIVE WEBCAST AUCTION

Sale Date: Tuesday, July 16, Beginning at 10:00 AM EDT **Inspection:** Monday, July 15, from 9:00 AM to 4:00 PM or by Appointment

Former Assets of – Mt. Gilead Location



MAJOR PLASTIC INJECTION MOLDING FACILITY & REAL ESTATE FOR SALE



TOSHIBA 390 TON INJECTION MOLDER

Including: (24) Nissei, Mitsubishi, Van Dorn, Toshiba & MIR Horizontal & Vertical Injection Molding Machines Up to 1,000 Ton Capacity, Plus Real Estate

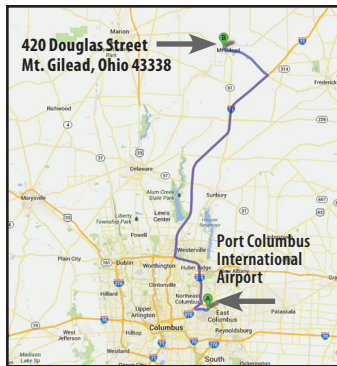
LIVE WEBCAST AUCTION

HOTELS

Country Inn & Suites
by Carlson Marion (866) 307-5578
2091 Marion Mount Gilead Road
Marion, OH 43302
Fairfield Inn
by Marriott Marion..... (740) 389-6636
227 James Way
Marion, OH 43302

DIRECTIONS

From Port Columbus International Airport: Take 71 N 40 miles for Exit 151 for OH-95. Turn left on OH-95W. Turn right on N Delaware Street. Take 2nd left onto Douglas Street. Plant will be on your right.



AIRPORT: Port Columbus International Airport (50 Miles from Auction Site).

TERMS OF SALE

Payment: All payments must be in Cash, Certified Funds, Wire Transfers or Company Checks must be accompanied with a bank letter guaranteeing irrevocable payment to MACHINERY NETWORK AUCTIONS. Online Buyers must register by 5 pm Monday, July 15, 2013. A 15% buyers premium will be added to all onsite purchases (18% Online). A \$2,000 refundable security deposit is required for online registration. A 25% deposit is required at time of purchase, balance due by 4 pm, Wednesday, July 17, 2013. NO EXCEPTIONS. All goods are sold "As Is, Where Is", ALL SALES ARE FINAL. All subject to prior sale. All Sales in US Funds. Complete terms and conditions including removal procedures, are available on our website, will be posted at the auction and will be provided at the time of registration.

REMOVAL TIMES

All Items by Tuesday, July 2, 2013. Hours: Monday – Friday between 8 am – 4 pm. Extended hours and weekends by appointment. No items may be removed during auction. NO EXCEPTIONS.

This brochure is meant merely as a guide. Perfection Industrial Sales, Infinity Assets and Machinery Network Auctions make no guarantee, expressed or implied, as to the accuracy of the information in this brochure. Buyers should inspect the goods beforehand to satisfy themselves.

FURTHER INFORMATION

For Further information on machinery and equipment please contact Steve Kleba at (847) 427-3333 or via email at Steve@PerfectionIndustrial.com

For further information regarding auction accounting, contact Raleigh Burke at (818) 788-2260 or Email Raleigh@machinerynetwork.com

Sale Date: Tuesday, July 16, Beginning at 10:00 AM EDT

Location: 420 Douglas Street, Mt. Gilead, Ohio 43338

Inspection: Monday, July 15, from 9:00 AM to 4:00 PM or by Appointment

Online Bidding Available Through

BidSpotter.com



PERFECTION Industrial Sales

Perfection Industrial Sales
ph 847-427-3333 • fax 847-427-8884
www.perfectionindustrial.com

Sale is Being Held in Conjunction With:

