

PUBLIC AUCTION

DANIER

Leather Jackets, Clothing & Accessories Manufacturing Plant

2650 St. Clair Ave West & 53 Samor Rd, Toronto, Ontario



130 SEWING MACHINES AVAILABLE

DURKOPP ADLER DOUBLE & SINGLE WELT SEWING MACHINE



3,000 PCS/HR

2003

VEIT VARIANT 2 PLUS 4 TUNNEL FINISHER



400+ AVAILABLE

**BUSTS &
FULL BODY**

RHO & HANS BOODT MANNEQUINS



METI LAYOUT STAND AVAILABLE

2002

TESEO MODEL FC4 240 AUTOMATIC LEATHER CUTTING SYSTEM

Auction: Tuesday June 7, 10:30AM (ET)

Inspection: Monday June 6, 9 AM to 4 PM

**Bid Live Onsite
& Online Via
BidSpotter.com**

 **INFINITY**
Asset Solutions

infinityassets.com 905.669.8893

AUCTIONS • LIQUIDATIONS • APPRAISALS • FINANCING

 **Crescent
Commercial
Corporation**

SEWING MACHINES



**SINGLE
&
DOUBLE
WELT**

DURKOPP ADLER MODEL 745-34 SEWING MACHINE



LEATHER & CLOTH BUTTON HOLES

DURKOPP ADLER MODEL 745-22/23 SEWING MACHINE

(65) **Durkopp Adler** model 767-FA-373 Sewing Machines w/ Quick Digital & Efka D/C Vario Control Readouts, most 110/1

Durkopp Adler model 745-34 White Single & Double Welt Sewing Machine w/ Flap Attachment, s/n 024675565, digital control

Durkopp Adler model 745-22/23 Double Welt Sewing Machine, s/n 666067 w/ Microcontrol-Multitest Digital Control (Used for Leather & Cloth Button Holes)

Durkopp Adler model 541-103 Sewing Machine (Parts Only)

Durkopp Adler model 67-6K373 Sewing Machine (Parts Only)

(5) **Juki** model MB-373 Button Sewing Machines (Gray)

Juki model MB-372 Button Sewing Machine

Juki model PLC-1610-7 Post Bed Unison Feed Lock Stitch Sewing Machine, s/n PLCBD01580 w/ Efka D/C Vario Control 810

Readout, Large Bobbin Posit/Trim

Juki model LH-527 Sewing Machine, 2 Needle Feed, Split Needle Bar w/ Reverse

(3) **Juki** model DDDL-5550-6 Single Needle Lock Stitch Sewing Machines, s/n's DDLVA39077, DDLVA38979, DDLVG36446, Posit Trim

Juki model DDL-5550N-7 Single Needle Lock Stitch Sewing Machine, s/n ITLWK36693, Posit/Trim

Juki model DDL-555-4 Single Needle Lock Stitch Sewing Machine, s/n P97010, Posit/Trim

Juki model APW 192 Automatic Pocket Welt Sewing Machine w/ LH-570 Head, s/n 102088, Single & Double Welt, No Stacker

Juki model LBH-784 Button Hole Machine, s/n 781P17133 (Gray)

Juki model LBH-783 Button Hole Machine, s/n 781S35610 (Gray)

(6) **Juki** model MO-2516 Sergers, most w/ trimmers

Juki model MO-6716S Serger, s/n 8MOV12143

Juki model MO-3904 Serger, Mock Stitch w/ Trimmer

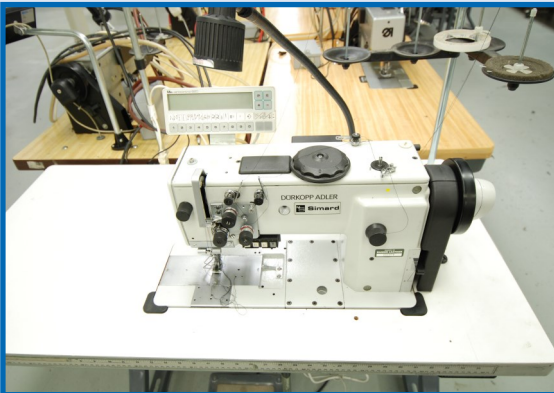
Juki model MO-2504 Serger, Mock Stitch w/ Trimmer

(2) **Juki** model MOR-3904 Serger, Mock Stitch w/ Trimmer

Juki model MO-3714 Serger, Mock Stitch w/ Trimmer

Juki model MO-2312 Serger, Mock Stitch

Juki model MOR-2514 Serger, Rake Top Feed Mock Stitch

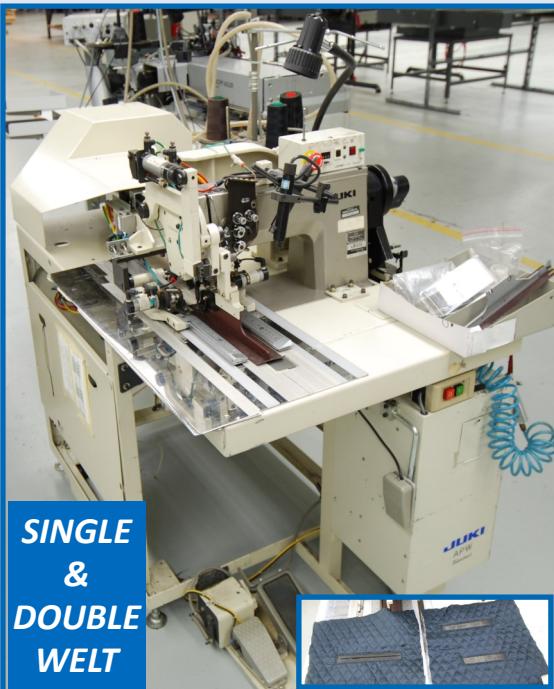


DURKOPP ADLER MODEL 767-FA-373 SEWING MACHINE



65 AVAILABLE

PARTIAL VIEW OF DURKOPP ADLER SEWING MACHINES



**SINGLE
&
DOUBLE
WELT**

JUKI MODEL APW 192 AUTOMATIC POCKET WELT SEWING MACHINE



POSIT/TRIM

JUKI SINGLE NEEDLE LOCK STITCH SEWING MACHINE



18 AVAILABLE

PARTIAL VIEW OF JUKI SEWING MACHINES



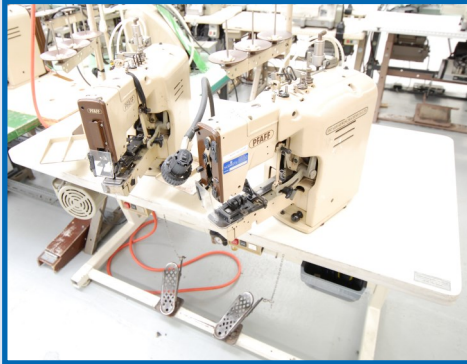
JUKI MODEL PLC-1610-7 SEWING MACHINE



JUKI BUTTON SEWING MACHINE



PARTIAL VIEW OF JUKI SERGERS



PFAFF BUTTON SEWING MACHINE



MANY LIKE NEW

PARTIAL VIEW OF KANSAI SPECIAL SEWING MACHINES



LEFT HAND FABRIC TRIM

PEGASUS COVERSTITCH SEWING MACHINE



UNIVERSAL FASTENERS INC. HOOK & EYE MACHINE



MITSUBISHI IVIZ SEWING MACHINE



NEW STYLE

AMF REESE KEY HOLE MACHINE

(2) **Pfaff** model 3306/033/1 Button Sewing Machines Including Necking Style Unit, s/n's 855020, 852987

(2) **Pfaff** model 3300/958/01 Button Sewing Machines, s/n's 800166, 800187

Pfaff model 3306 Button Sewing Machine, s/n 836954 (Cream)

Pfaff model 138-6/21-BS Single Needle WF Zigzag Sewing Machine, s/n 197623

(2) **Kansai Special** model RX-9803A/UTC Cover Stitch Sewing Machines, s/n's 831951, 257750, Posit/Trim

Kansai Special model RX-9803C/UTC Cover Stitch Sewing Machine, s/n 931780 (Like New)

Kansai Special model RX-9803D/UTC Cover Stitch Sewing Machine, s/n 159957 (Like New)

Kansai Special model WX-8803D/UTC-E Cover Stitch Sewing Machine, s/n KS701678M, Posit/Trim (Like New)

Kansai Special model DFB-1412P 12-Needle Sewing Machine, s/n 803786

(3) **Pegasus W600** model W664-03FB Cover Stitch Sewing Machines, Posit/Trim, D/C Efka Motors

Pegasus W600 model W664-35AC Cover Stitch Sewing Machine w/ Left Hand Fabric Trim, Posit/Trim & Efka D/C Motor

Universal Fasteners Inc. Hook & Eye Machine, s/n's H87-2964E, H853055H

Yamato model CM-352 High Speed Blind Stitch Sewing Machine, s/n CM28637

Benz model 816 High Speed Blind Stitch Sewing Machine

U.S. Blind Stitch Machine Corp. model 1099-9 Blind Stitch Sewing Machine

Reliable model 199R Zigzag Sewing Machine

(2) **Adler** model 167-GK373 Sewing Machines, s/n's 9972, 9517, Large Double Reverse

Mitsubishi model LS2-180 Iviz Sewing Machine, s/n 685-871, Posit/Trim

Rex model RX-518 Blind Stitch Sewing Machine, s/n 0800420

Merrow model M-2DNR-1 Sewing Machine, s/n 211859, Pearl Stitch

Elna model 6003 Sewing Machine

Consew model 199R Zigzag Sewing Machine

Union Special model CS132 Cylinder Posit/Trim

Approximately 1500' of Feed Rail Track w/ Boxes for Sewing Machines

(2) **Ace** model HC-720WP Strip Cutter, s/n's 14286, PCSM

RAVFCO No 1 Snap Press

M. Simard model 9894 Stud Press

(2) **M. Simard** model 200, 201 Pneumatic Snap Machines, s/n's M8719, 1816

TKM Snap Machine

(35) Hand Snap Machines w/ Dies

Astor model 53 Cover Button Machine, 500 Buttons/hr

Reliable Sewing Machine Co. Ltd. Thread Winder

AMF Reese Key Hole machine, s/n 2061 (New Style)

Reese model 101 Button Hole Machine, s/n 88130, Adjustable Fly Bar

Nippy model NP-1 Leather Skiving Machine, s/n N8A0540

Visit infinityassets.com to view complete specs & additional photos

LEATHER/FABRIC MEASURING, CUTTING & TESTING



2002

9' X 4' TABLE

TESEO AUTOMATIC LEATHER CUTTING SYSTEM



TESEO LEATHER LAYOUT STAND

2002 **Teseo** model FC4 240 Automatic Leather Cutting System, s/n 180.300.604, Computer Controlled, 9'L x 4'W

Teseo model METI Leather Layout Stand, s/n 180.340.005

1998 **Cutting Room Appliances Trigger Champion** model Trigger CHT 1500 66 Electric Cloth Cutting Machine, 72" x 36' Table & 78" x 60' Table

Cutting Room Appliances Expandable Spreader

Lectra Systems model Zund M-1600 Cutting System, s/n M16.188U, 6'L x 5'W Table

Lectra model Alys30 Plotter, 83" Capacity

Centiplan model C1600x3200 Measuring Table, s/n 185

Atom model G888 25T Travelling Head Clicker Press, s/n 41347, 24"L x 20"W Head, 68" Bed

(2) **Orion** model OR-600 Electric Cloth Cutting Machines, 3,450 RPM, s/n's 920350, 920351

KM model KS-EU Electric Cloth Cutting Machine, 3,000-3,600 RPM, s/n 104 72

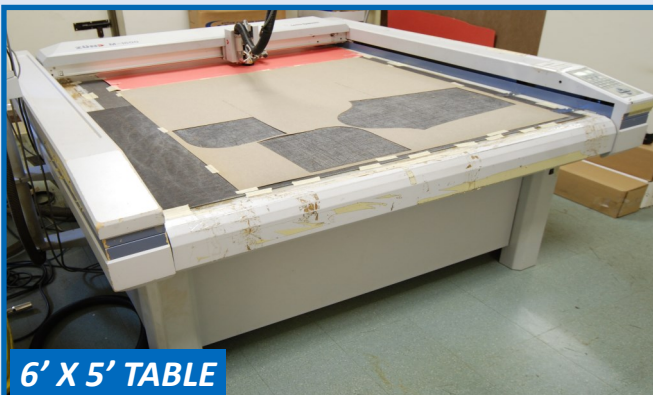
Eastman Blue Stream II model 629X 8" Electric Cloth Cutting Machine, 3,450 RPM, s/n 2-NU257-5

KM model H-150 Cloth Drill s/n 700672

Eastman Super Lite Cloth Drill, 250 RPM, up to 8" capacity, s/n 7493

2003 **Giuliani Torino-Italy** model IG/10MOD Leather Rub Fastness Tester, s/n 13748

GTI MiniMatcher model MM 4e Artificial Light Source



6' X 5' TABLE

LECTRA SYSTEMS MODEL ZUND M-1600 CUTTING SYSTEM

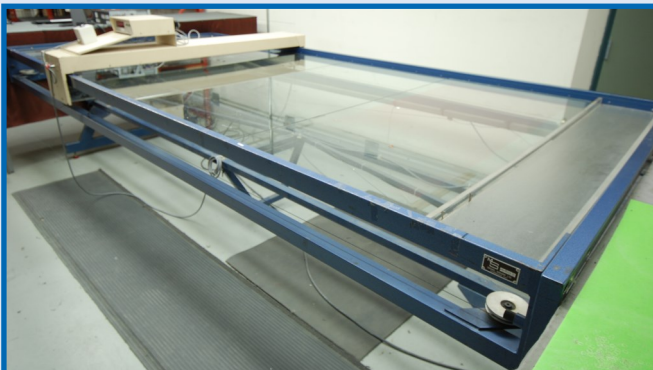


CRA CLOTH CUTTING MACHINE



83" CAPACITY

LECTRA PLOTTER



CENTIPLAN MODEL C1600X3200 MEASURING TABLE



2003

GIULIANI RUB FASTNESS TESTER



8 AVAILABLE

PARTIAL VIEW OF ELECTRIC CLOTH CUTTING MACHINES



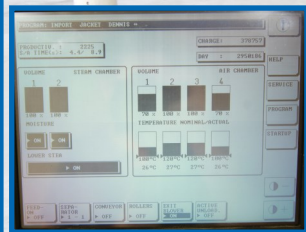
GTI MINIMATCHER ARTIFICIAL LIGHT



24" X 20" HEAD

ATOM MODEL G888 25T TRAVELLING HEAD CLICKER PRESS

2003



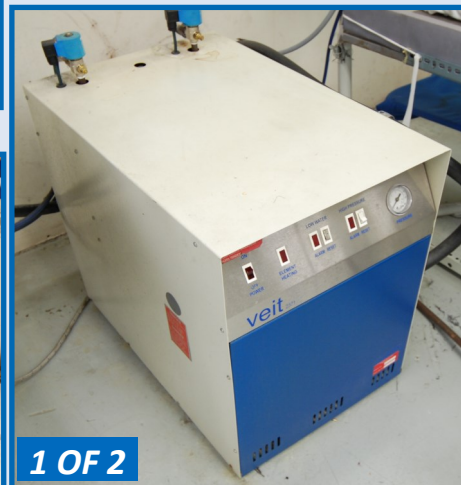
3,000 PCS/HR

VEIT VARIANT 2 PLUS 4 TUNNEL FINISHER



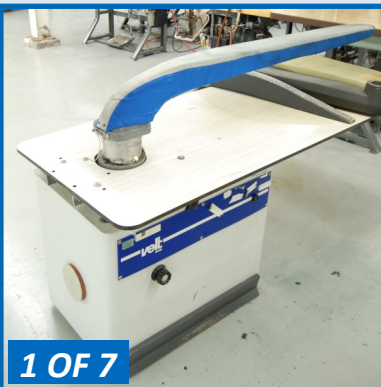
1 OF 2

PARTIAL VIEW OF VEIT IRONS



1 OF 2

VEIT BOILER



1 OF 7

VEIT UNDERPRESSER



VEIT PANTS PRESS



2 AVAILABLE

CISSELL FULL IRON PRESSES



4 AVAILABLE

SIMPLEX FUSING MACHINE



8 AVAILABLE

CISSELL IRONING STATIONS

IRONING, FUSING & FINISHING

2003 **Veit** Variant 2 plus 4 Tunnel Finisher, 2 Steam Chambers, 4 Air Chambers, 77" x 10.5" Opening, 22'L Tunnel, 75' of Conveyor, 3,000 pcs/hr
 (2) **Veit** model 2371 Boilers
 (3) **Veit** model 4419-3 Underpressers, s/n's 2809, 2255, 0910
 (2) **Veit** model 1441980001 Underpressers, s/n's 11432101, 110401401
 (2) **Veit** model 443310060 Underpressers, s/n's 0800002401, n/a
Veit model 8710 Pants Press, s/n 01000610
Veit 2002, 2003 Irons
 (8) **Cissell** Ironing Stations
 (2) **Cissell** Full Iron Presses
 (4) 1998 **Simplex** model 354A Fusing Machines, 48"L x 30"W Plate, s/n's 1950792, 1971192, 1930692, 1981192
Sal-bee Machinie Ltd. Model PK600 Foil Stamping Machine, s/n 02078
Cassco Machines model HPS-2500 Heat Sealer Machine, s/n 2139, 6" x 12" Head, Digital Control
Hashima model HP-124D Fuse Press, s/n 005389, 48"L x 16.5"W Plate



CASSCO MACHINES HEAT SEALER



SAL-BEE FOIL STAMPER

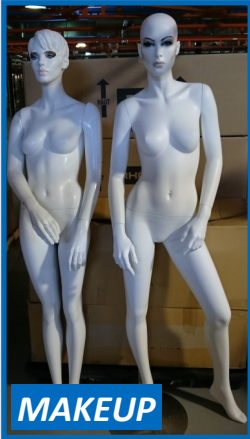
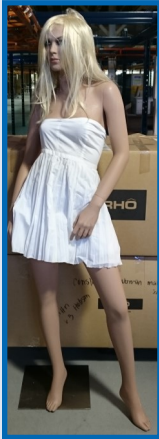
Visit
infinityassets.com
 to view Veit Tunnel Finisher in operation



MANNEQUINS & OFFICE FURNITURE



FULL COLOUR



MAKEUP



MALE & FEMALE

PARTIAL VIEW OF FULL BODY MANNEQUINS



CHILDREN



REGULAR & HEADLESS



400+ AVAILABLE

RHO

HANS BOODT



JUDY MANNEQUINS

PARTIAL VIEW OF CHILD MANNEQUINS & BUSTS



PARTIAL VIEW OF OFFICE FURNITURE



MANY AVAILABLE



GLOBAL

TEKNION

PARTIAL VIEW OF OFFICE CUBICLES



1 OF 3



RECEPTION FURNITURE



BidSpotter.com
Or Bid By Proxy

Visit
infinityassets.com
to view complete
specs & additional
photos



1 OF 3

CROWN ELECTRIC WALKIE



53' TRAILER

9 AVAILABLE



2003

2,093,000 BTU

HURST MODEL S4-G-50-150 STEAM BOILER



2 AVAILABLE

UP TO 840,000 BTU

FULTON STEAM BOILER



NSS ENTERPRISE INC. FLOOR CLEANER



2 AVAILABLE

DEVIBLISS 15HP AIR COMPRESSOR



DEVIBLISS MODEL 8055 AIR DRYER

Crown model ST3000-20 Electric Walkie, 3,250lb capacity, s/n 5A526084, 128" Max Lift
Crown model 20 MT Electric Walkie, 2,000lb capacity, s/n IA230524, 130" Max Lift
 (9) Trailers up to 53'
 2003 **Hurst** model S4-G-50-150 Steam Boiler, s/n S250-150-28M, 2,093,000 Max BTU
 1993 **Fulton** model ICS-20 Fuel Fired Steam Boiler, 20HP, Natural Gas, 840,000 Max BTU
 1993 **Fulton** model FB-015-F Fuel Fired Steam Boiler, 15HP, Natural Gas, 630,000 Max BTU
Devibliss model VAV-5061 Air Compressor, 15HP, s/n CH20675
Devibliss model VAV-5062 Air Compressor, 15HP, s/n 44841
Devibliss model 8055 Air Dryer, s/n N805511-516099050
Thomson Garden model TG25 Air Dryer
Culligan Water Softener System
Rema Dry Vac Corp. model RP-25 Dry Vac, s/n 891379
NSS Enterprise Inc. model Wrangler 2008AB Floor Cleaner, s/n 10979511, 24V
 (125) **Ergo** Factory Chairs
 (2) Jiggers
Tobi Garment Steamer

Note: 2 Locations, 1 Auction. All items to be sold at 2650 St. Clair Ave. West



ERGO FACTORY CHAIRS



LARGE OFFERING

PARTIAL VIEW OF EMPLOYEE LOCKERS



200 AVAILABLE

PARTIAL VIEW OF Z CLOTHING RACKS



140 SECTIONS AVAILABLE

PARTIAL VIEW OF PALLET RACKING



100 AVAILABLE

PARTIAL VIEW OF PLASTIC BINS

Visit infinityassets.com to view complete specs & additional photos

MISCELLANEOUS

- (140) Sections of Pallet Racking
- (200) Z Clothing Racks
- (100) Plastic Rolling Bins

Avery Denison model H9855 Label Printer w/ Computer

Plus: Large offering of employee lockers, hand tools, pallet jacks, strapping carts, security tags, hangers, garment bags, metal shelving, computers, TVs, projectors, cafeteria equipment, store fixtures & retail displays, metro racks, cardboard boxes, metal tables, first aid equipment, and much more!



TERMS OF SALE

Payment: All payments must be in Cash, Certified Funds, Wire Transfers, or Company Checks, which must be accompanied with a bank letter guaranteeing irrevocable payment to Infinity Asset Solutions Inc. Invoices up to \$2,000 can be paid by Visa, Mastercard or Interac.

All Online bidders must register on Bidspotter by 5pm Monday June 6. A 15% buyers premium will be added to all onsite purchases (18% Online).

A \$500 refundable security deposit is required upon onsite registration (\$2,000 Online).

A 25% deposit is required at time of purchase, balance due by 4pm Wednesday June 8, 2016. NO EXCEPTIONS.

All goods are sold "As Is, Where Is", ALL SALES ARE FINAL. All subject to prior sale. Complete terms and conditions including removal procedures, are available on our website and will be provided at the time of registration.

REMOVAL TIMES

All items by Friday June 17, 2016.

Hours: Monday—Friday between 8 am—4 pm.

No items may be removed during auction. NO EXCEPTIONS

DIRECTIONS:

From Toronto Pearson Intl Airport to 2650 St. Clair Ave West, York, ON. Exit Airport and get on ON-427 S. Use the left lane to take the Eglinton Ave Exit. Merge onto Eglinton Ave. Turn right onto Scarlett Road. Use the left 2 lanes to turn onto St. Clair Ave West. Destination will be on the left.



This brochure is meant merely as a guide. Infinity Asset Solutions makes no guarantee, expressed or implied, as to the accuracy of the information in this brochure. Buyers should inspect the goods beforehand to satisfy themselves.

Member In Good Standing Of:




INFINITY
Asset Solutions

infinityassets.com 905.669.8893

AUCTIONS • LIQUIDATIONS • APPRAISALS • FINANCING



Crescent
Commercial
Corporation