

# 2 DAY ONLINE AUCTION

As Authorized By FTI Consulting Canada Inc.



*Industry Leading Designer & Manufacturer of Ride Systems & Theme Park Attractions*

1765 Coast Meridian Road, Port Coquitlam, BC



2007

PEDDINGHAUS FBD2500 CNC PLATE PROCESSOR



ABR MOD-U-BLAST SAND BLAST ROOM

**2-DAYS – OVER 2,500 LOTS!**



40'W X 225'L

FREE STANDING

12.5-TON CAP.

COASTAL PACIFIC OVERHEAD CRANE SYSTEM



2.5M+ NEW INVENTORY

PARTIAL VIEW OF INVENTORY, POWER PACKS, ETC.

**CLOSES: Wednesday June 14<sup>th</sup> & Thursday June 15<sup>th</sup>, 9:00 AM PST**

**Inspection: Tuesday June 13<sup>th</sup>, 9AM – 4PM or By Appointment**

In Conjunction with



www.joinersales.com 1.604.852.8711

Abbotsford, BC - Edmonton, AB  
AUCTIONEERS - EQUIPMENT APPRAISERS

Managed By:



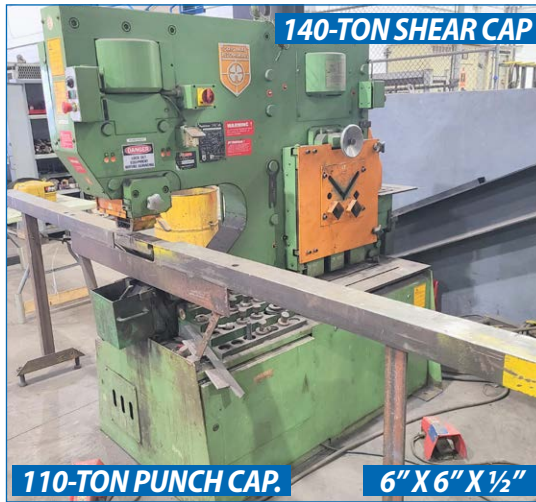
- AUCTIONS
- LIQUIDATIONS
- FINANCING
- APPRAISALS





**2007**

**PEDDINGHAUS FDB2500 CNC PLATE PROCESSOR**



**140-TON SHEAR CAP**

**110-TON PUNCH CAP.**

**6" X 6" X 1/2"**

**PEDDINGHAUS PEDDIMAX 110/140 IRONWORKER**



**400-TON X 12' CAP.**

**DIES AVAILABLE**

**ALLSTEEL 400-12 PRESS BRAKE**



**10' X 1/2" CAP.**

**SCOTTISH SQUAREMASTER SHEAR**



**HYDMECH S35P SEMI-AUTO BANDSAW**



**KINGSTON HL2500 LATHE**



**2 BANDSAWS AVAILABLE**

**HYDMECH S35P SEMI-AUTO BANDSAW**



**HYDMECH V-18 SEMI-AUTO BANDSAW**

## CNC PLATE PROCESSOR

2007 **PEDDINGHAUS** FDB2500 CNC Plate Processor, Siemens Sinumerik CNC Control, Drill Hole Size 2", Max Material Thickness 3", Max Material Width 96", Plasma Cutting Capacity 1- 1/2", Oxy-fuel Cutting 3", (3) Drill Spindles, HYPERTHERM HyPerformance Plasma HPR260 Plasma Power Supply, s/n 51957

## IRON WORKER

**PEDDINGHAUS** Peddimax 110/140 Hydraulic Ironworker, 110-Ton Punch Cap., 140-Ton Shear Cap., 6" x 6" x 1/2" at 90 Degrees, s/n 442363453809007

## PRESS BRAKE

**ALLSTEEL** 400-12 Hydraulic Press Brake, 400-Ton x 12' Cap., s/n 4014  
Qty. of Brake Press Dies

## SHEAR

**SCOTTISH** Squaremaster Hydraulic Shear, 10' x 1/2" Cap., s/n 4077

## SAWS

**HYDMECH** S35P Semi-Automatic Horizontal Mitering Bandsaw c/w Infeed & Outfeed Conveyor

**HYDMECH** V-18 Semi-Automatic Vertical Bandsaw c/w Infeed & Outfeed Conveyor

## LATHES & MILLS

**KINGSTON** HL2500 Engine Lathe, 21" x 102", 3 & 4-Jaw Chucks, Tool Post, Tailstock

**ADCOCK-SHIPLEY** 2S Milling Machine





**ABR MOD-U-BLAST SAND BLAST ROOM**



**2020 GLOBAL FINISHING SOLUTIONS EXHAUST CHAMBER**



**6,000LB CAP.**

**RANSOME 60P WELDING POSITIONER**



**(3) SETS AVAILABLE**

**PARTIAL VIEW OF LARGE POWERED TANK TURNING ROLLS**

**SAND BLAST ROOM**

**ABR Mod-U-Blast Sand Blast Room**, Approx. 8'W x 20'L x 12'H w/ Reclaim System

(3) **DONALDSON TORIT** Downflow Dust Collectors

**PAINT & SUPPORT EQUIPMENT**

2020 **GLOBAL FINISHING SOLUTIONS** PECG-2008 Exhaust Chamber, s/n U113852-A

(2) **GRACO** Xtreme X70 Airless Sprayers

**WELDING & SUPPORT**

(8) **MILLER** XMT 456 CC/CV DC Inverter Arc Welders

**MILLER** XMT 304 CC/CV Dc Inverter Arc Welder

**MILLER** Trailblazer 302 Professional Series Diesel Power Welder/Generator

(12) **MILLER** 70 Wire feeders

**LINCOLN ELECTRIC** Power Wave 455M Welder, s/n U1070202599 w/ Power Feeder

**LINCOLN ELECTRIC** Precision Tig 185 Welder

(3) Large Powered Tank Turning Rolls

**RANSOME** 60P Welding Positioner, 6,000lb Cap., s/n 207115

**RED-D-ARC** RP1 Benchtop Welding Positioner (8) Oxy & Acetylene Carts

**KOIKE** Minimantis-II Semi-Automatic Track Cutter, s/n 008022

**RED-D-ARC** Track Cutters

**LARGE QTY.** Welding Cables & Grounds

(50+) Boxes **NEW HOBART** FabCo Triple 7 Welding Wire



**12+ AVAILABLE**



**PARTIAL VIEW OF MILLER & LINCOLN ELECTRIC WELDERS**







**FARO PORTABLE CMM**



**UP TO 10-TON CAP.**

**PARTIAL VIEW OF PORTABLE GANTRIES**

## QUALITY CONTROL

**FARO** Portable CMM

**Mitutoyo** LH-600E Linear Height Gauge w/color TFT LCD display

## CRANE SYSTEMS

**COASTAL PACIFIC** Free Standing Overhead Crane System, Approx. 40'W X 225'L, (2) **COASTAL PACIFIC** 12.5-Ton Cap. Top Riding Under Hung Bridge Cranes, (1) **DEMAG** 5-Ton Cap. Top Riding Under Hung Bridge Crane, Pendant Controllers, Runway, Supports, etc.

**DEMAG** 5-Ton Bridge Crane

(5) Portable Gantry Systems, Up to 10-Ton Cap. w/ Electric Hoists

(8) 360-Degree Free Standing Jib Cranes w/ Electric Hoists

(2) **DEMAG** Electric Crane Hoists

## FORKLIFTS & ROLLING STOCK

**TOYOTA** 8FGCU25 Propane Forklift, 3,150lb Cap., 189" Max Lift, 3-Stage Mast, Pneumatic Outdoor Tires, Approx. 4,600hrs, s/n 17928

**TOYOTA** FGC45 Propane Forklift, 9,150lb Cap., 171" Max Lift, 3-Stage Mast, Side Shift, Cushion Tires, Approx. 3,800hrs, s/n 12590

2013 **INTERNATIONAL TERRASTAR** SFA 4x2 Commercial Box Truck, VIN# 1HTJSSK8EH760701, Approx. 258,025kms, MAXXFORCE Advanced Diesel Power Engine, Automatic Transmission, Lift Gate

2010 **GMC** Sierra SLT 3500 HD Pickup Truck, VIN# 1GT4K-4B65AF123845, Approx. 368,000kms, Z71 4X4, Diesel, Crew Cab, Allison Transmission Duramax

2007 **FORD** Ranger Sport Pickup Truck, VIN# 1FTYR44U-17PA81881

(5) Pairs of Fork Extensions

## VEHICLE HOIST

**IDEAL AUTOMOTIVE EQUIPMENT** TP10KAC-D 2-Post Vehicle Hoist, 10,000lb Cap., s/n 10201100528

## AIR MANAGEMENT

(2) **GARDNER DENVER** Rotary Screw Air Compressors, 50HP

**GARDNER DENVER** Air Dryer

**PURESTREAM** Air Dryer

## SPECIALTY AMUSEMENT RIDE TEST EQUIPMENT

Custom Design Roller Coaster Brake Wheel Rotation Speed Tester

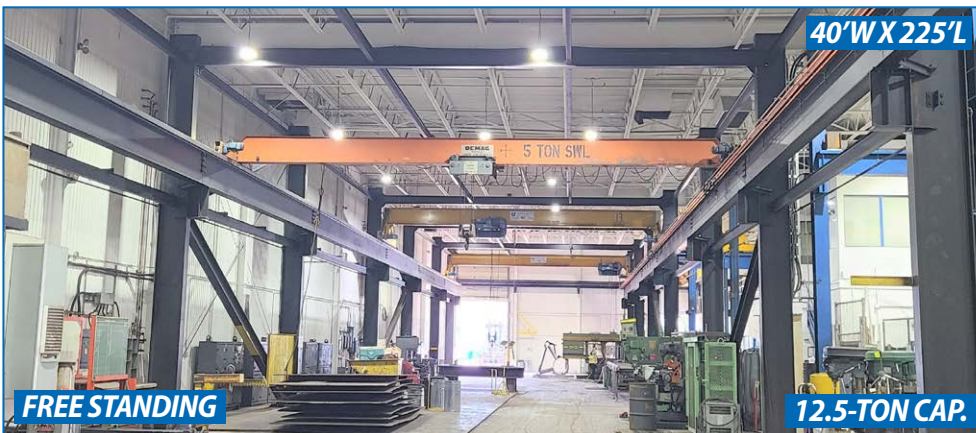
(40+) Test Ride Dummy Weight Simulators

## ELECTRICAL

(30+) **BEAVER / GREEN LINE** Electrical Transformers, Switch Gear and Power Distribution Boxes

## PORTABLE STRUCTURE

**KRAFT CURING** Concrete Solutions Free Standing Covered Structure, Galvanized Frame, Vinyl Cover, Approx. 16'L x 12'H x 12'W



**40'W X 225'L**

**FREE STANDING**

**12.5-TON CAP.**

**COASTAL PACIFIC OVERHEAD CRANE SYSTEM**



**8 AVAILABLE**

**PARTIAL VIEW OF 360-DEGREE JIB CRANES**



**10,000LB CAP.**

**IDEAL AUTO EQUIPMENT TP10KAC-D VEHICLE HOIST**



**3,150LB CAP.**

**2 FORKLIFTS AVAILABLE**

**TOYOTA 8FGCU25 PROPANE FORKLIFT**



**2013**

**3 TRUCKS AVAILABLE**

**INTERNATIONAL TERRASTAR SFA 4X2 TRUCK**



**KRAFT CURING FREE STANDING STRUCTURE**





PARTIAL VIEW OF SEACANS



PARTIAL VIEW OF PLANT SUPPORT EQUIPMENT

## WAREHOUSE INDUSTRIAL RACKING & SUPPORT

(120+) Sections of Industrial Pallet Racking w/ Mesh Decking

(60+) Sections of **FASTENAL** Inventory Parts Storage Shelving w/ Particle Board Shelves

**ULINE** Portable Inventory Carts

(10+) **ULINE / LIFTRITE** Lift Carts

(8) Rolling Bolt Bin Storage Units

Rolling Warehouse Ladders

Rolling Parts Racks

## SEA CONTAINERS

(10) Sea Container, Barn Door Type - 40'/20'/10'

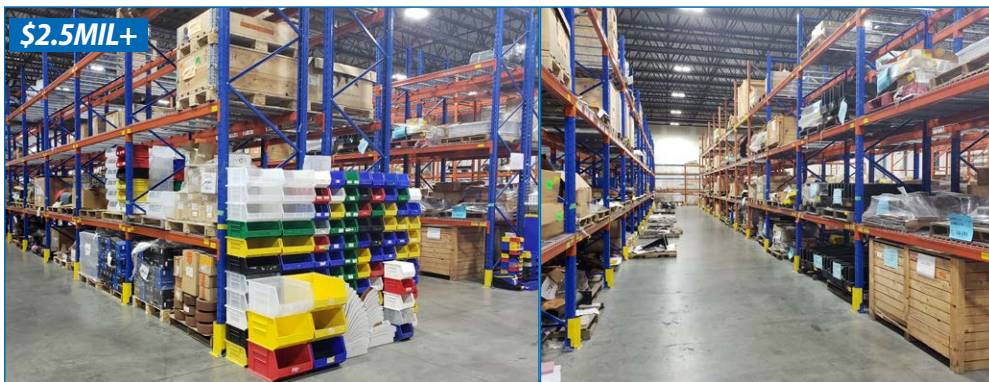
## SHOP TOOLS & PLANT SUPPORT

**LARGE QTY.** of Steel Work Tables, (70+) Chain Falls, (40+) ¾ to 1-Ton Come-Alongs, Lifting Chains & Harnesses, Large Steel Stock Storage Bins, **HOTSY** Shop Pressure Washer, Mag Drills, **RIDGID** 535 Power Pipe Threader, Pneumatic Tools, (40+) **ROCK RIVER / FEATHERLITE** Step Ladders, (2) **ROLAIR** Portable Shop Compressors, **HUSKY** Toolboxes & Storage Cabinets, (15+) **KNAACK** Stagemaster Job Boxes, Portable Scissor Lift Platforms, (8) **LIFTRITE** Pallet Jacks, 45-Ton Hydraulic Shop Press, (8) **WHITESIDE** Mechanic Creepers, **POWERIG** Hydraulic Power Unit, **PRO POINT** 10-Ton Jack Stands, (8) **PROTO** Torque Wrenches, Heavy Duty Storage Lockers w/ Lifting Ties, **RIDGID** Hand Tools, **WESTWARD** Combo Wrenches, Hydraulic Bottle Jacks, (4) **WESTWARD** 10-Ton Adjustable Vehicle Stands, **ENERPAC** Hydraulic Power Packs, Jacks & Rams, **HILTI**, **DEWALT**, **MAKITA** Power Tools, **MITUTOYO** Precision Instruments, Digital Height Gauges, Granite Surface Plates, Micrometers, Pin Gauges, Depth Gauges, Scales, Electronic Test Equipment, **HEDGEHOG TECHNOLOGIES** Test Unit, **KIENE** Diesel 900 Series Stationary Version Diesel Engine Rebuild Stand, Pedestal Grinders & Polishing Lathes, Lifting Magnets, Plate Clamps, Punches, (5) **KING / GENERAL** Drill Presses, (40+) Aluminum Scaffolding Walkways, Qty. of Aluminum I-Beam Flooring & Catwalk & Much More!





# DAY 2 - \$2.5MIL IN NEW INVENTORY



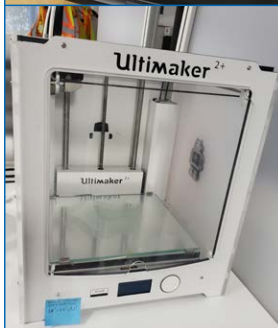
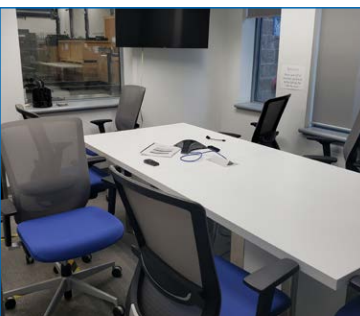
## \$2.5M IN NEW INVENTORY

- LARGE QTY.** of Electrical Wire
- FASTENAL** Hardware, Nut & Bolt Dispensary
- LARGE QTY.** Electric Motors – Various HP, Variable Speed Drives
- SKF** Bearing Mounting Kit
- PLUS:** Wheels, Castors, Bearings, Casings, Hose, Reducers, Electronics, LED Panels, Transformers, etc.

PARTIAL VIEW OF NEW INVENTORY

## OFFICE EQUIPMENT & ELECTRONICS

- SMART BOARD** 8084i interactive Flat Panel SMART Digital Vision
- ULTIMAKER** 3D Printer
- OCE** Plotwave 360 Wide Format Digital Printer
- (16+) **LENOVO** Thinkpads
- ZOLL AED** Plus Emergency Defibrillator
- Workstations w/ Height Adjustment Option
- (20+) Workstations w/ Glass Partitions
- Boardroom Tables
- Executive Office Chairs
- Qty. of Assorted Filing Cabinets



PART VIEW OF OFFICE EQUIPMENT & ELECTRONICS

**BidSpotter.com**

### TERMS OF SALE

**Payment:** All payments must be in Cash, Certified Funds, Wire Transfers, or Company Cheques, which must be accompanied with a bank letter guaranteeing irrevocable payment to Infinity Asset Solutions Inc. Invoices up to \$2,000 can be paid by Visa, Mastercard or Interac.

All bidders must register on Bidspotter by Tuesday June 13th, 5pm.

A 18% buyers premium will be added to all Online purchases.

A \$2,000 refundable security deposit is required upon online registration.

A 25% deposit is required at time of purchase, balance due by Friday June 16th, 2023, 4pm. NO EXCEPTIONS.

### SALE BEING CONDUCTED IN CANADIAN FUNDS

All goods are sold "As Is, Where Is", ALL SALES ARE FINAL. All subject to prior sale. Complete terms and conditions including removal procedures, are available on our website.

### REMOVAL TIMES

All items by Friday June 30th, 2023

*This brochure is meant merely as a guide. Infinity Asset Solutions makes no guarantee, expressed or implied, as to the accuracy of the information in this brochure. Buyers should inspect the goods beforehand to satisfy themselves.*

In Conjunction with



www.joinersales.com 1.604.852.8711  
Abbotsford, BC - Edmonton, AB  
AUCTIONEERS - EQUIPMENT APPRAISERS

Managed By:



- AUCTIONS
- LIQUIDATIONS
- FINANCING
- APPRAISALS

905.669.8893 • infinityassets.com

