

**COMPLETE LARGE CAPACITY MACHINE SHOP AND
REPAIR FACILITY INCLUDING LARGE LATHES, WELDING,
GRINDERS AND REAL ESTATE**

Bidspotter.com™
To Become a Qualified Bidder on the Internet
See Instructions on Page 7

PUBLIC AUCTION

Plant Closed – The Former Property of



**4628 Camp Coleman Road
Trussville, Alabama 35173**

20 Miles Northeast of Birmingham off I-59

SALE DATE: THURSDAY MARCH 15TH STARTING AT 9:00 AM CST

INSPECTION: WEDNESDAY MARCH 14TH FROM 10:00 AM TO 4:00 PM CST

**Prime Location
1-1/2 Miles Off I-59**

REAL ESTATE OFFERED BY

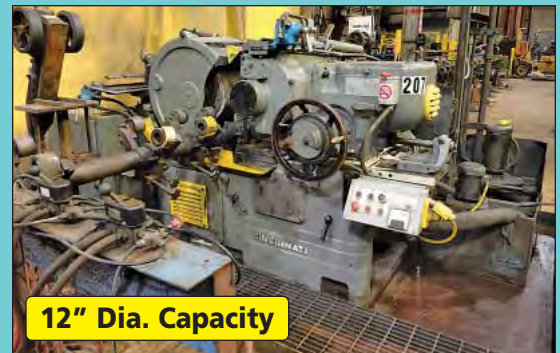
Red Rock Realty Group | Henry Seibels, Broker | 205.930.1782
John Stewart Auctions / Dick Chittam Realty | John Stewart, Auctioneer



50-Ton Crane Bay



40"/52" X 320" Capacity



12" Dia. Capacity



27" X 120" Capacity



12" Hole

SALE UNDER THE MANAGEMENT OF

**Cincinnati Industrial
Auctioneers Inc.**

2020 DUNLAP ST., CINCINNATI, OHIO 45214
PHONE (513) 241-9701 / FAX (513) 241-6760
WEBSITE: www.cia-auction.com



IN CONJUNCTION WITH

**Infinity Asset
Solutions Inc.**

63 MAPLECRETE ROAD, CONCORD, ONTARIO L4K 1A5
PHONE (905) 669-8893 / FAX (905) 669-7512
WEBSITE: www.infassets.com





PRIME INDUSTRIAL REAL ESTATE



**Prime Location
1-1/2 Miles Off I-59**



**Ideal for Heavy Fab or
Machining Operation**

50-Ton Crane Bay



HEAVY CRANED MACHINE SHOP BUILDING

Prime Location Approx. 1-1/2 Miles Off I-59

TO BE OFFERED AT 11:00 AM

32,727 +/- Sq. Ft. Heavy Craned Machine Shop / Warehouse on Approx. 3 Acres; 32,727 +/- Sq. Ft. Gross Building Area, 27,375 Sq. Ft. Craned Shop Space, 2,800 Sq. Ft. Office Area, 40' Approx. Span X 275' Long Full Length Main Crane Bay w/ 50 Ton Crane Rail Capacity and (1) 25 Ton Crane, 25' Approx. Span X 275' Long Full Length Aux. Crane Bay w/ 30 Ton Crane Rail Capacity and (1) 7-1/2 Ton Crane, 3 Acre Partially Paved Fenced Lot, (2) 22' Wide Side by Side Ground Level Doors End Building, (2) 22' Wide Opposed Doors on Side of Building, 900 Amp 277/480 Volt 3-Phase Alabama Power Electric, City Gas and Water, 1-1/2 Miles off I-59 at Exit No. 143 Deerfoot Parkway, Information Deemed Reliable But Not Guaranteed.

Subject to High Bid Confirmation by Owner, Subject to Prior Sale, Subject To Withdraw by Owner, 6% Buyers Premium In Effect For Real Estate, Offered Live On-Site Only, No Internet Bidding Available on the Real Estate

Real Estate Terms of Sale: To Be Offered Live Onsite only, 6% Buyers Premium on the Real Estate, \$10,000.00 Down in Cash or Certified Funds sale day. A 6% Buyers Premium on the Real Estate will be added to the high bid to determine contract price. High bidder will be required to sign a "Contract to Purchase" for the amount at the sale's conclusion. Owner will have 48 hours to accept, or reject high bid. If accepted the balance will be due at closing within 60 days of auction. If the bid is not accepted buyer's deposit will be refunded promptly. Seller will present buyer a Statutory Warranty Deed at closing. Occupancy shall be given upon closing. Taxes will be prorated until closing. Property will sell on an "as is" basis. There shall be no warranty of any kind given with regards to the premises, other than title; all implied warranties shall be disclaimed. Announcements at the time of sale will take precedent over all information provided in advertisements. Call for complete terms and information package.



For More Information Contact:

Red Rock Realty Group | Henry Seibels, Broker

D: 205.930.1782 | O: 205-324-3383

hseibels@redrockrg.com | www.redrockrg.com

John Stewart Auctions / Dick Chittam Realty

John Stewart, Auctioneer | PH: 256-431-7504

johnstewart@pclnet.net | www.johnstewartauctions.com



40"/52" X 320" Capacity

40" / 52" X 320" Poreba Model TR-100B1/8M Geared Head Gap Bed Engine Lathe

HOLLOW SPINDLE LATHES

32" X 120" Kuraki Model LC-403-30 Hollow Spindle Geared Head Engine Lathe; S/N 260, 12 1/2" Spindle Bore, 32" Swing Over Bed, 20" Swing Over Cross Slide, 120" Distance Between Centers, Front and Rear 24" 4-Jaw Chucks, 30 HP Drive Motor, 350 RPM Spindle Speed, Inch Threading, Quick Change Tool Post, Taper Attachment, Idler Roller, Chasing Dial, Steady Rest, Repaired and Refurbished by Horizon Industrial Services in 2006. Call for Rebuild Invoice (Mfg. 1981 / Rebuilt 2006) **SEE PHOTO**

32" X 120" Kuraki Model LC-403-30 Hollow Spindle Geared Head Engine Lathe; S/N N/A, 12-1/2" Spindle Bore, 32" Swing Over Bed, 20" Swing Over Cross Slide, 120" Distance Between Centers, 24" and 28" (Front and Rear) 4-Jaw Chucks, 30 HP Drive Motor, 350 RPM Spindle Speed, Inch Threading, Quick Change Tool Post, Taper Attachment, Idler Roller, Chasing Dial, Steady Rest, Machine Currently Disassembled, Partially Repaired and Refurbished by Horizon Industrial Services in 2006 Prior to Shut Down (Mfg. 1981 / Partially Rebuilt 2006)

25" X 120" Dean Smith & Grace Model 25P Hollow Spindle Geared Head Engine Lathe; S/N 41339, 10 7/8" Spindle Bore, 25" Swing Over Bed, 14" Swing Over Cross Slide, 120" Distance Between Centers, 26" Front and Rear 4-Jaw

Chucks, 290 RPM Spindle Speed, Inch Threading, Taper Attachment, Quick Change Tool Post, 20 HP Drive Motor, (2) Idler Rollers, Repaired and Refurbished by Horizon Industrial Services in 2007. Call for Rebuild Invoice (Rebuilt 2007) **SEE PHOTO**

LARGE CAPACITY LATHES

52" X 720" (60") Leblond Dual Carriage Geared Head Engine Lathe; S/N NR40, 3" Spindle Bore, 52" Swing Over Bed, 32" Swing Over Cross Slide, 672" Distance Between Centers, 47" 4-Jaw Chuck, 165 RPM Spindle Speed, Inch Threading, (2) Carriages (1) w/ Taper, (3) Stead Rests, Tailstock **SEE PHOTO**

40" / 52" X 320" Poreba Model TR-100B1/8M Geared Head Gap Bed Engine Lathe; S/N 1191-192, 4.5" Spindle Bore, 40" Swing Over Bed, 52" Swing In Gap, 27" Swing Over Cross Slide, 320" Distance Between Centers, 630 RPM Spindle Speed, Metric & Inch Threading, Taper Attachment, Chasing Dial, (5) Steady Rests, 17" Face Plate, 40 KW Drive Motor (New 1978) **SEE PHOTO**

34" X 320" Leblond Dual Carriage Geared Head Engine Lathe; S/N N/A, 34" Swing Over Bed, 22" Swing Over Cross Slides, 320" Distance Between Centers, 2" Spindle Bore, 25" 4-Jaw Chuck, (2) Carriages, 25 HP Motor, Currently Not In Service



Reverse View 40" / 52" X 320" Poreba Model TR-100B1/8M Geared Head Gap Bed Engine Lathe



25" X 120" Dean Smith & Grace Model 25P Hollow Spindle Geared Head Engine Lathe



Reverse View 32" X 120" Kuraki Model LC-403-30 Hollow Spindle Geared Head Engine Lathe



32" X 120" Kuraki Model LC-403-30 Hollow Spindle Geared Head Engine Lathe



THURSDAY, MARCH 15TH - 9:00 AM



56' Long Mfg. Unk. Dual Traveling Head Weld Build Up Lathe



27' X 120' Romi Model M27 Flat Bed CNC Lathe



Cincinnati Milacron Model Hawk 250-A2100ERD CNC Turning Center



Sodick Model A-530D AWT CNC Wire Cut EDM

CNC FLAT BED LATHE

27" X 120" Romi Model M27 Flat Bed CNC Lathe; S/N 002-088870-405, Fanuc Series 21i-T CNC Control, 27" Swing Over Bed, 16.9" Swing Over Cross Slide, 120" Distance Between Centers, 4.1" Spindle Bore, 14.2" X-Axis, 120" Z-Axis, 15" Atlas 3-Jaw Chuck, 1800 RPM Spindle Speed, 30 HP Motor, 8-Position Duplomatic Tool Turret, Kabel Schlepp Chip Conveyor, 19" Atlas 4-Jaw Chuck, Approx. 370 Run Time Hours Showing Auctioneer Unsure of Accuracy (**New 2004**) **SEE PHOTO**

CNC TURNING CENTER

Cincinnati Milacron Model Hawk 250-A2100ERD CNC Turning Center; S/N 7060A00980032, Acramatic 2100 CNC Control, 10" SMW Chuck, 27.1" Max Turn Length, 20.8" Max Swing Over Bed, 13.7" Max Turn Dia. (STD Tooling), 10.6" X-Axis, 27.1" Z-Axis, 3,300 RPM Spindle Speed, 12-Position Turret, 3" Bar Chuck Capacity, Coolant System, Chip Conveyor (**New 1998**) **SEE PHOTO**

CNC WIRE EDM

Sodick Model A-530D AWT CNC Wire Cut EDM; S/N T-2253, Fine Sodick EX21 CNC Control, 19.6" X-Axis, 12.5" Y-Axis, 10.6" Z-Axis, 35.4" W X 23.6" L X 10.2" Max Work Piece Dimensions, 7" Max Work Piece Submerged Cutting, 0.1 - 0.3 MM Wire Diameter, Auto Wire Threading, Dielectric Fluid System (**New 1995**) **SEE PHOTO**

LARGE BED POLISHING LATHE

34" X 350" Leblond Dual Carriage Geared Head Polishing Engine Lathe; S/N N/A, 34" Swing Over Bed, 22" Swing Over Cross Slide, 350" Distance Between Centers, 25" 4-Jaw Chuck, (2) Carriages w/ 2" Baldor Belt Sanders, 255 RPM Spindle Speed, 25 HP Main Drive Motor, Steady Rest, Neoprene Idler Rollers **SEE PHOTO**

> **AAF International Model N Roto Clone Dust Collector;** S/N 01-3322 **SEE PHOTO**

LARGE CAPACITY WELD BUILD UP LATHES

56' Long Mfg. Unk. Dual Traveling Head Weld Build Up Lathe; American Motorized Head Stock w/ Baldor Variable Speed Motor Control, 2 HP Drive Motor, (2) Lincoln Model NA-5 Self Traveling Welding Heads, (2) 1,500 Amp Lincoln Idealarc DC-1500 Welding Power Supplies w/ Wire Feeds, (3) Idler Rolls, (2) 13' Pre-Heat Tubes, 10' Pre-Heat Tube, 6' Pre-Heat Tube **SEE PHOTO**

15' Long Mfg. Unk. Weld Build Up Lathe; S/N N/A, Motorized Headstock Unit, 16" 3-Jaw Chuck, Motor Master 100 Variable Speed Motor Control, 1 HP Scott Drive Motor, PB Control Panel, Idler Rolls, 12' Pre-Heat Tube, 17" Rubber Belt Conveyor

CYLINDRICAL GRINDER

12" X 48" Cincinnati Universal O.D. Cylindrical Grinder; S/N 20315R3, Drop Down I.D. Spindle, 1-1/2" Thick X 12" Dia. Grinding Wheel, 8" 4-Jaw Chuck, (4) Work Rests, (3) Extra I.D. Spindles, 3 HP Main Wheel Motor, 1 HP Work Head Motor, Coolant System **SEE PHOTO**

> **Micro Air Model OM-500 Dust Collector**

STRAIGHTENING PRESS

Mfg. Unknown Traveling Head Hydraulic Straightening Press; 3' X 17' Table, 15 HP Hydraulic Motor, Pendant Control **SEE PHOTO**

TILT FRAME BAND SAW

18" Marvel Model 8-Mark-II Tilt Frame Vertical Band Saw; S/N 828809, 450 Ft/Min Blade Speed, 10' Infeed Conveyor, 10' Outfeed Conveyor, Coolant System, PB Control **SEE PHOTO**



Mfg. Unknown Traveling Head Hydraulic Straightening Press



6' Arm X 19" Column Fosdick Radial Arm Drill



52" X 720" Capacity

52" X 720" (60') Leblond Dual Carriage Geared Head Engine Lathe

TOOLROOM MACHINERY

18" X 78" Monarch Geared Head Engine Lathe; S/N 33345, 18" Swing Over Bed, 10" Swing Over Cross Slide, Chasing Dial, 800 RPM, Inch Threading, Quick Change Tool Post, 12" 3-Jaw Chuck, 16" 4-Jaw Chuck, Mitutoyo UDR-220 DRO

3 HP YCI Supermax Model YCM-16VS Variable Speed Vertical Milling Machine; S/N 1053818, 9" X 49" Table, 4200 RPM Spindle, X-Axis Power Table Feed

2 HP Bridgeport Variable Speed Vertical Milling Machine; S/N 281515, 9" X 48" Table, Power Draw Bar, Newall DRO, X-Axis Power Table Feed

SEE PHOTO

6' Arm X 19" Column Fosdick Radial Arm Drill; S/N N/A, 1800 RPM Spindle Speed, 24"W X 30"L X 19" High Drill Box

SEE PHOTO

K.O. Lee Model B360 Tool Cutter & Grinder; S/N 9489-366

Darex Model BK-65 Precision Drill Sharpener Darex Drill Sharpener

MISC. MACHINERY

Misc. Machinery Consisting of; (4) Milwaukee and Black and Decker Magnetic Base Drills, Hydraulic Electric H-Frame Press; Enerpac Model PER-3042 Hydraulic Unit, 21" Rutland Model 2666-5500 Floor Drill; 12" X 16" Table, 15" Abrasive Chop Saw, 8" Mfg. Unknown Type Saw, Coral Portable Dust Collector, Alkota Portable Steam Cleaner; S/N 149277, 100 Ton Powerteam Portable Hydraulic Unit w/ Cylinder Jack, (2) 15 HP Hydraulic Units

INSPECTION EQUIPMENT

Large Quantity of Inspection Equipment Consisting of; Skidmore Wilhelm Model ML Bolt Tension Calibrator; S/N 13354, Parker Research

Model DA-200 Mig Particle Test Kit; S/N 12632, KTA - Tator Model M/I Tester, Proceq Equo Tip Portable Hardness Tester, Mitutoyo Surface Tester, Holdridge Model 8D Radii Cutter, 33"W X 44"L X 8.5" Thick Trustone Grade A Granite Surface Plate w/ Stand, Elcometer 246 Thickness Tester, Elcometer 345 Thickness Tester, Barnant Platinum Thermometer, Micrometers by Fowler & Starrett up to 20", Dial Type Bore Gauges up to 16", Gauge Block Sets, Gauge Block Accessory Set, 80" Vernier Caliper, 40" Vernier Calipers, Various Size Calipers, Standards, Micrometer Sets, (2) 26" Mitutoyo Dial Type Height Gauges, Stuhr Wheel Balancer, Starrett Precision Lave, Pin Gauges & Other Related Items

SHOP EQUIPMENT

Large Quantity of Shop Equipment Consisting of; Maintenance Department, Pallet Trucks, D.E. Grinder, 2" Belt Sander, Portable Infrared Heaters, Torpedo Heaters, Electric Hand Tools, Hand Tools, Torch Carts, Shop Ladders, Pedestal Fans, Dump Hoppers, Push Mower, (2) 3/4" Pneumatic Impact Guns, Pneumatic Hand Tools, C-Clamps, Extension Ladders, Building and Machine Maintenance Parts and Other Related Items

MODULAR SHOP OFFICE

10' W X 8' L X 8' High Porta-King Modular Shop Office; (1) Man Door, A/C Unit

OFFICE EQUIPMENT

Office Equipment Consisting of; Nec Model DX7NA-48 Phone System w/ (25) Phones, 24" Mutoh XP-500 Series Intelligent Plotter, HP Officejet 7310 All-In-One Printer, Konica Model 7145 Copier, Executive Office Furniture, File Cabinets, Lateral File Cabinets, Blueprint File Cabinets, Modern L-Shaped Desks, Two-Door Storage Cabinets, Drafting Table, Folding Tables, Chairs and Many Other Related Items



52" X 720" Capacity

Reverse View 52" X 720" (60') Leblond Dual Carriage Geared Head Engine Lathe



34" X 350" Capacity

34" X 350" Leblond Dual Carriage Geared Head Polishing Engine Lathe



2 HP Bridgeport Variable Speed Vertical Milling Machine



18" Marvel Model 8-Mark-II Tilt Frame Vertical Band Saw



12" X 48" Cincinnati Universal O.D. Cylindrical Grinder



THURSDAY, MARCH 15TH - 9:00 AM

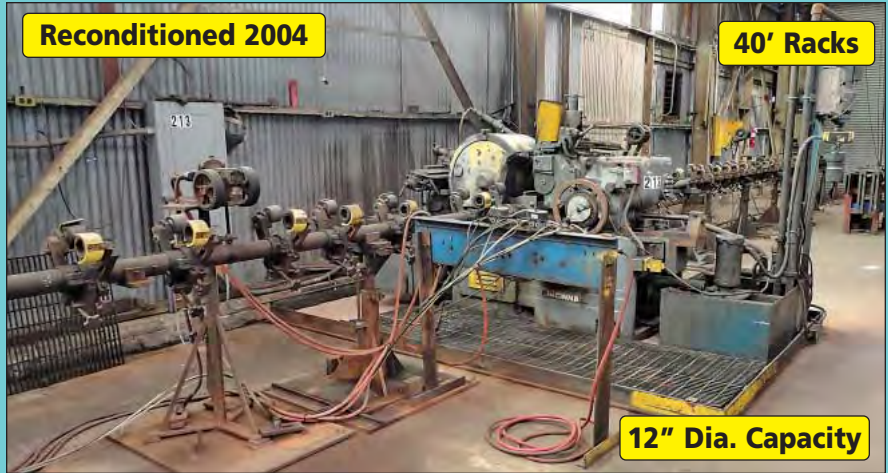


40' Racks

Reconditioned 2005

12" Dia. Capacity

Cincinnati Model No. 3 EA Thru-Feed Centerless Grinder



Reconditioned 2004

40' Racks

12" Dia. Capacity

Cincinnati Model No. 3 EA Thru-Feed Centerless Grinder



(2) 50' Long Mfg. Unk. Custom Built Traveling Gantry Manual Shaft Straightening Systems



Partial View Large Capacity Machine Accessories



Close Up View Shaft Straightening Gantry Systems



Joe Fuller Steel Roller Motorized Tank Turning Roll Set



100 Ton Edwards Model Jaws IV Hydraulic Ironworker



AAF International Model N Roto Clone Dust Collector

CENTERLESS GRINDERS

Cincinnati Model No. 3 EA Thru-Feed Centerless Grinder; S/N 3M3H1J-134, DeB Personnel Said Machine Capacity is 2" - 12" Dia., Approx. 43' Infeed and 43' Outfeed Roller Rack Stands, 1/2" - 6" Dia. Capacity (Depending on Workrest), 4-3/4" Dia. X 7-1/2" Long Grinding Wheel Spindle, 4" Dia. X 5-1/2" Long Regulating Wheel Plain Bearing at Front, 2-5/8" Dia. X 3-3/4" Long Regulating Wheel Plain Bearing at Rear, 24" Dia. X 12" Hole X 4" - 10" Face Grinding Wheel, 14" Dia. X 5" Hole X 4" - 10" Face Regulating Wheel, Hydraulic Contour Truing on Regulating and Grinding Wheels, New 50 HP Spindle Motor, Coolant Tank and Pump, Reconditioned By Grinders Clearing House 2005 Call for Rebuild Invoice (**Reconditioned 2005**)

SEE PHOTO

Cincinnati Model No. 3 EA Thru-Feed Centerless Grinder; S/N R6003-4, DeB Personnel Said Machine Capacity is 2" - 12" Dia., Approx. 43' Infeed and 43' Outfeed Roller Rack Stands, 1/2" - 6" Dia. Capacity (Depending on Workrest), 4-3/4" Dia. X 7-1/2" Long Grinding Wheel Spindle, 4" Dia. X 5-1/2" Long Regulating Wheel Plain Bearing at Front, 2-5/8" Dia. X 3-3/4" Long Regulating Wheel Plain Bearing at Rear, 24" Dia. X 12" Hole X 4" - 10" Face Grinding Wheel, 14" Dia. X 5" Hole X 4" - 10" Face Regulating Wheel, Hydraulic Contour Truing on Regulating and Grinding Wheels, New 50 HP Spindle Motor, Coolant Tank and Pump, Reconditioned By Grinders Clearing House 2004 Call for Rebuild Invoice (**Reconditioned 2004**)

Cincinnati Model No. 3 EA Centerless Grinder; S/N N/A, Machine Not In Service, Needs Rebuild

Misc. Parts For Cincinnati Centerless Grinders Including a Disassembled Feed Rack

SHAFT STRAIGHTENING SYSTEMS

(2) 50' Long Mfg. Unk. Custom Built Traveling Gantry Manual Shaft Straightening Systems; Each System w/ Joe Fuller Motorized Tank Turning Rolls w/ Idler Set, 3 Ton X 6' Span Motorized Track Mounted Gantry System w/ 3 Ton Harrington Chain Hoist w/ Pendant, Approx. 2 Ton Counter Weight Unit

SEE PHOTO

TANK TURNING ROLLS

Joe Fuller Steel Roller Motorized Tank Turning Roll Set; (2) Idler Rolls, Pendant Control, Rolls 17" on Centers

SEE PHOTO

IRONWORKER

100 Ton Edwards Model Jaws IV Hydraulic Ironworker; S/N N/A, 2-1/2" X 5" X 1/2" Notching Capacity, 7" X 7" Angle Shear, 14" Flat Shear, 1-1/4" Dia. Hole X 1" Thick Plate Punch Capacity

SEE PHOTO

WELDERS AND RELATED

Bug-O-System Model BVG-5100-CRC Automated Track Guided Welder; S/N 0891206, 650 Amp Miller Deltaweld 651 DC Mig Welder, Miller Wire Feed (**New 2006**)

(4) 650 Amp Miller Deltaweld 651 DC Mig Welders w/ Miller Wire Feeders

(3) 500 Amp Westinghouse Arc Welders

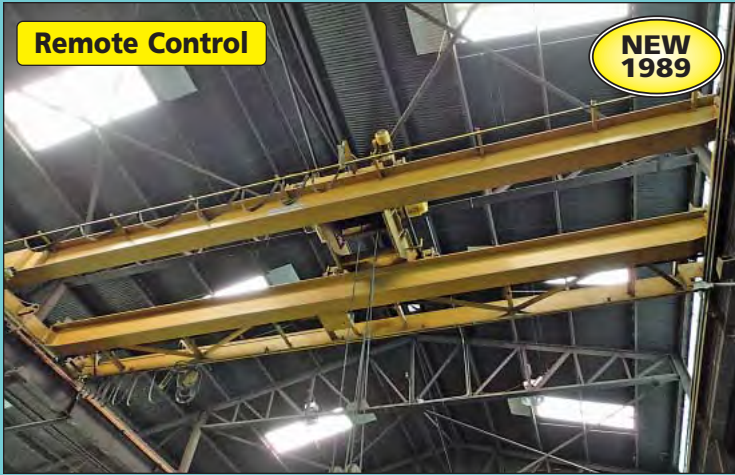
200 Amp Hobart Beta-Mig 2510 Mig Welder

200 Amp Hypertherm Max 200 Plasma Cutter

Phoenix Model 7 Dry Rod Oven; 100 Degree - 550 Degree Temp. Range

Victor Track Burner

Welding Equipment Consisting of; Welding Wire, Welding Rods, Leads, Guns & Other Related Items



Remote Control

**NEW
1989**

25 Ton X 40' Approx. Span Pelham Double Girder Top Running Overhead Bridge Crane



Remote Control

**NEW
1987**

15 Ton X 40' Approx. Span Pelham Double Girder Top Running Overhead Bridge Crane



(3) 7 -1/2 Ton X 26' Approx. Span Pelham Double Girder Top Running Overhead Bridge Cranes; (2) w/Remote Controls

MACHINE ACCESSORIES AND TOOLING

10' W X 18' L X 6" Thick T-Slotted Cast Iron Floor Plate
36" W X 72" L X 32" High T-Slotted Cast Iron Riser Block
(2) 24" W X 40" L X 32" High T-Slotted Cast Iron Riser Blocks

Large Quantity Tooling Consisting of; Large Morse Taper Drills, Large Indexable and Cemented Lathe Tools, Large Boring Bars, Drill Indexes, End Mills and Many Other Related Items

AIR COMPRESSORS AND RELATED

50 HP Ingersoll Rand Model SSR-XFE50 Cabinet Enclosed Rotary Screw Air Compressor; S/N F2093U91
SEE PHOTO

20 HP Ingersoll Rand Model U201-1-SP Horizontal Tank Air Compressor; S/N KC905U92F

10 HP Campbell Hausfeld Model CI103120HB Horizontal Tank Air Compressor; S/N 2001-00030

Ingersoll Rand model TS250 Refrigerated Air Dryer; S/N 010501, 175 PSIG (New 2001)

800 Gallon Vertical Air Receiving Tank

LIFT TRUCKS

15,000 LB Hyster Model S150A LP Gas Solid Tire Lift Truck; S/N A024D0571H, 220" 3-Stage Mast, 72" Forks, Auto Transmission with High / Low, Upgraded

8,000 LB Daewoo Model D355 Dual Pneumatic Tire Diesel Lift Truck; S/N 21-00254, Two-Stage Mast, 144" Max Lift Height, Side Shift

6,000 LB Hyster Pneumatic Tire Diesel Lift Truck; S/N A177B02634C, Two-Stage Mast, 124" Max Lift Height

OVERHEAD BRIDGE CRANES, JIB CRANES AND RELATED

To Be Sold At 11:00 AM Right after Building Subject to Bid Confirmation

25 Ton X 40' Approx. Span Pelham Double Girder Top Running Overhead Bridge Crane; S/N 89114, 25 Ton Cable Hoist, Remote Control (New 1989) **SEE PHOTO**

15 Ton X 40' Approx. Span Pelham Double Girder Top Running Overhead Bridge Crane; S/N 870849, 15 Ton Yale Cable Hoist, Remote Control (New 1987) **SEE PHOTO**

(3) 7-1/2 Ton X 26' Approx. Span Pelham Double Girder Top Running Overhead Bridge Cranes; Each w/ 7-1/2 Ton Robbins & Myers Cable Hoist, (2) w/ Remote Controls and (1) w/ Pendant Controls (New Approx. Late 1980's) **SEE PHOTO**

(2) 3 Ton X 29' Approx. Mfg. Unk. Span Double Girder Top Running Overhead Bridge Cranes; Each w/ 3 Ton Robbins and Meyers Cable Hoists, Pendant Control

(2) 15 Ton X 30' Span Spreader Bars

(5) 1/4 Ton X 20' Arm Column Mount Jib Cranes

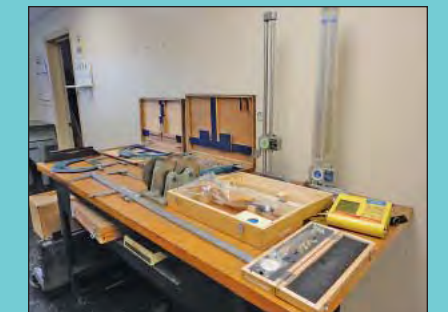
Large Quantity of Lifting Accessories Consisting of; Lifting Magnet, Chain Falls, Clevises, Sheet Lifters, Cable Chokers, Nylon Straps & Other Related Items



Bank View 8,000 Daewoo and 6,000 Lb. Hyster Pneumatic Tire Lift Trucks



50 HP Ingersoll Rand Model SSR-XFE50 Cabinet Enclosed Rotary Screw Air Compressor



Partial View Inspection Tools and Equipment

WEBCAST BIDDER INSTRUCTIONS

- > All Internet bidders must register for this auction at www.bidspotter.com at least 48-Hours Prior to the Sale Date, **if you do not you will not be approved.**
- > All Internet bidders must Post a Deposit of Approx. 25% of Your Planned Spending Budget or \$5,000.00 Minimum with Cincinnati Industrial Auctioneers in Order to be approved to Bid. Those who do Not Post the Deposit Will Not be Approved. **Period.**
- > **Only Major Items Will be Available for Online Bidding.** Please refer to the Listing on www.bidspotter.com for Available Online Items



- > There is a 15% Buyer's Premium in Effect for All Online Purchases.
- > We Highly Recommend that Potential Buyers Attend this Auction & Bid Live Onsite. This will give you the Ability to Inspect the Items & Fully Appreciate Their Condition, Along with Saving You 3% of the Buyer's Premium.

No Last Minute Registrations will be accepted. Make Sure to Register & Post Your Deposit No Later than 48-Hours Prior to the Start of the Auction.

PUBLIC AUCTION

Plant Closed – The Former Property Of



4628 Camp Coleman Road
Trussville, Alabama 35173

20 Miles Northeast of Birmingham off I-59

SALE DATE:
Thursday, March 15th
STARTING: 9:00 AM CST

INSPECTION:
Wednesday, March 14th
10:00 AM to 4:00 PM CST



Cincinnati Industrial Auctioneers Inc.

2020 DUNLAP ST., CINCINNATI, OHIO 45214
PHONE (513) 241-9701 / FAX (513) 241-6760
WEBSITE: cia-auction.com



Heavy Craned Machine Shop Building



Hollow Spindle, Long Bed & CNC Lathes

FIRST CLASS MAIL!

PRE-SORT
FIRST CLASS
U.S. POSTAGE
PAID
CINCINNATI, OHIO
PERMIT NO. 3593

Important Mail

TO BE DIRECTED TO THE ATTENTION
OF EXECUTIVE PERSONNEL



THURSDAY, MARCH 15TH PUBLIC AUCTION

Plant Closed – The Former Property Of



4628 Camp Coleman Road
Trussville, Alabama 35173

20 Miles Northeast of Birmingham off I-59

IMPORTANT NOTICE:

Although information has been obtained from sources deemed reliable, the auctioneer makes no warranty or guarantee, expressed or implied, as to the accuracy of the information herein contained. It is for this reason that buyers should avail themselves of the opportunity to make inspection prior to the sale. This brochure is intended to provide general information of the equipment being offered and is subject to errors, omissions, additions or deletions. Please check with the Auctioneer's Office for a final listing. Items offered may or may not necessarily be sold as described and/or photographed in this brochure.

MAIL BIDS ACCEPTED WITH A 25% DEPOSIT

DIRECTIONS

From Birmingham, AL Proceed North On I-59 Towards Trussville, AL. Continue On I-59 North Approx. 12 Miles To Exit 143 Deerfoot Pkwy. Turn South (Left) Onto Deerfoot Pkwy And Proceed 2 Miles. Deerfoot Pkwy Changes To Camp Coleman Road After US-11. Proceed To Sale Site On Right Immediately After US-11 And Train Tracks. Watch For Auction Signs And Auction Parking.

AUCTIONEERS

Jeffrey L. Luggen
Alabama Auctioneer License No. 1125
Cincinnati Industrial Auctioneers
Alabama Auctioneer License No. 25

John Stewart
Alabama Auctioneer License No. 364



TERMS OF SALE

All equipment described herein will be sold "as is", "where is" to the highest bidder or bidders for cash in accordance with our regular terms and conditions of sale. Unless other satisfactory arrangements are made, a **25% deposit** in cash, certified or cashier's check payable to Cincinnati Industrial Auctioneers, Inc., **is required on all purchases.** Firm and personal checks accepted only if accompanied by a letter from your bank guaranteeing your funds. All sales are subject to state and/or local taxes unless a signed exemption form is presented at the time of purchase. **All balances are due at the conclusion of the sale.** No merchandise may be removed while the sale is in progress. **All bidders must comply with our Standard Terms of Sale,** copies of which will be available at the sale site or can be obtained from our website.

12% ONSITE BUYER'S PREMIUM
15% ONLINE BUYER'S PREMIUM

SALE UNDER THE MANAGEMENT OF

Cincinnati Industrial Auctioneers Inc.

2020 DUNLAP ST., CINCINNATI, OHIO 45214
PHONE (513) 241-9701 / FAX (513) 241-6760
WEBSITE: www.cia-auction.com



IN CONJUNCTION WITH

Infinity Asset Solutions Inc.

63 MAPLECRETE ROAD, CONCORD, ONTARIO L4K 1A5
PHONE (905) 669-8893 / FAX (905) 669-7512
WEBSITE: www.infassets.com

