

ONLINE AUCTION

State of the Art Recycled Fiber Pulp & Delink Facility

Screens, Presses, Clarifiers, Pumps, Valves, Motors, Spare Parts, Copper/Stainless
Coosa Pines, Alabama, USA

INSTALLED NEW in 2002 @ \$115 Million cost and idled since 2011



(2) ANDRITZ FIBREFLOW 400 DRUM PULPERS



21,000 LBS. CORE & COIL

(2) GE 14,000 KVA TRANSFORMERS



500,000 LBS of STAINLESS STEEL

100,000 LBS of COPPER TECH CABLE



(2) POSEIDON PPM-2400 DAF CLARIFIER

CLOSES: Wednesday Sept 16, 11AM (CT)

Inspection: Tuesday Sept 15, 9 AM to 4 PM or by appointment

**Bid Online Via
BidSpotter.com**

 **INFINITY**
Asset Solutions
905.669.8893 • infinityassets.com

- AUCTIONS
- LIQUIDATIONS
- FINANCING
- APPRAISALS

Sale in conjunction with:



canammachinery.com 800.783.7277
Used equipment for the Pulp and Paper Industry

DRUM PULPERS/CLARIFIERS/SCREW PRESSES & SUPPORT EQUIP.



2 AVAIL.

FIBREFLOW 400

The ANDRITZ FibreFlow drum pulper is used for fiber slushing and separation of coarse contaminants for all kinds of recycled fibers, ranging from old newspapers and magazines, mixed office waste, old corrugated containers and mixed waste to special raw materials like liquid packaging board. High production capacity and low power consumption due to the combination of pulping and screening in one compact unit make the ANDRITZ drum pulper a superior choice for continuous pulping.



8X6 403PF POSSE PUMP

1500 GPM

2 AVAIL.

POSEIDON PPM-2400 DAF CLARIFIER



800 Tons Cap.

2 AVAIL.

VOITH ECC8-44 DEINK CELL



3 AVAIL.

400HP

THUNE KVAERNER HYMAC SP-100 SL SCREW PRESS



SIDE VIEW OF PULPER



2 AVAIL.

KVAERNER DDF-520X2730 DISC FILTER

SULZER PUMPS / TOSHIBA MOTORS / VOITH SCREENS / VALVES



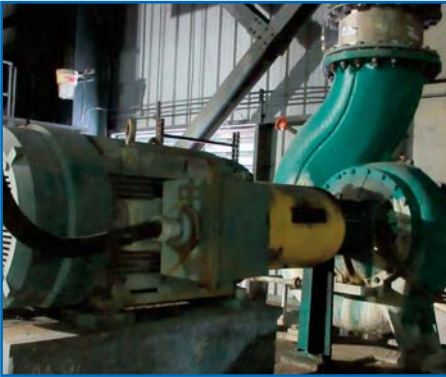
LARGE QTY PUMPS, MOTORS & VALVES



2 AVAIL.

800 HP

TOSHIBA MOTOR



MOTOR & PUMP



VOITH SCREENS



VOITH SCREEN

10 AVAIL.



50+ AVAIL.

TOSHIBA MOTORS



500 HP

TOSHIBA MOTORS



40+ AVAIL.

SULZER PUMPS



SULZER PUMPS



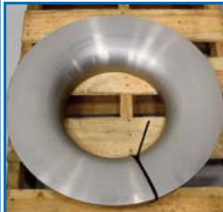
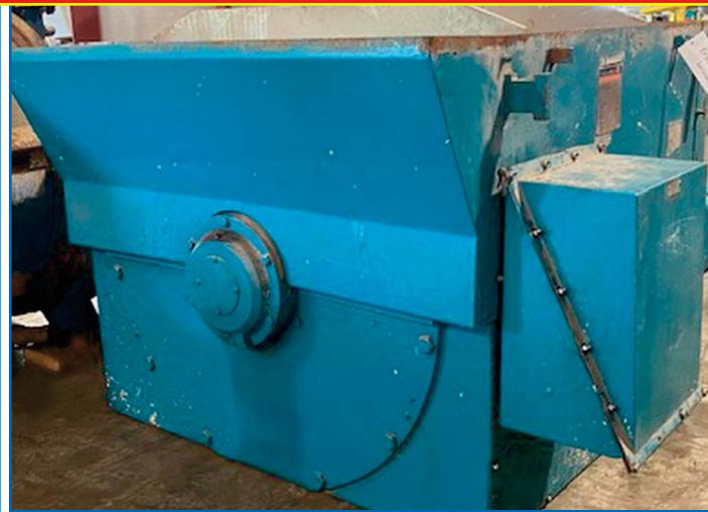
FISHER VALVES

Bid ONLINE at
BidSpotter.com

**\$1 MILLION NEW & USED SPARE PARTS AND STORES INVENTORY
TO INCLUDE: SHAFTS, SCREENS, MOTORS, PUMPS, REFINERS,
BEARINGS, BASKETS, GEAR DRIVES, IMPELLERS, VALVES, ROTORS,
SLEEVES, A.B. CIRCUIT BOARDS, CLEANERS AND MORE.**



NOTE: TO BE SHIPPED FROM WAREHOUSE IN FITCHBURG MASSACHUSETTS



Visit infinityassets.com
for complete specs and
additional photos

100,000 + LBS of COPPER WIRE & 500,000 + LBS STAINLESS STEEL



STAINLESS TANKS / DISC FILTERS / CLEANERS

2 AVAIL.

17FT DISCS



KVAERNER DF-520X2730 DISC FILTERS



10' x 20'

VOIHT BIRD HIGH DENSITY CLEANER

Bid ONLINE at
[BidSpotter.com](https://www.BidSpotter.com)

10,000 GAL

(3) APACHE 304LSS TANKS

TRANSFORMERS



2001

6 AVAIL.

21,000 LBS. CORE & COIL

(6) GE 14,000 KVA TRANSFORMERS



IMPORTANT RE: COVID-19. In light of the Coronavirus Pandemic, your Health & Safety at our auction site remain our top priority. We are striving to make the best decisions moving forward with the goal of protecting our customers, employees and their families. **SITE WILL BE ACCESSIBLE BY APPOINTMENT ONLY.** In order to gain access to the auction site, you must arrange entry with the Site Manager as well as bring the appropriate PPE and Face Mask. Social Distancing will be in effect, please maintain a distance of 6' minimum. If you cannot maintain a distance of 6', you **MUST** wear a Face Shield.

Exclusive Rigging May Be Applicable, Please Visit Website Or Contact Auctioneer For Further Information And Pricing

TERMS OF SALE



Payment: All payments must be in Cash, Certified Funds, Wire Transfers, or Company Cheques, which must be accompanied with a bank letter guaranteeing irrevocable payment to Infinity Asset Solutions Inc. Invoices up to \$2,000 can be paid by Visa, Mastercard or Interac.

All bidders must register on Bidspotter by Tuesday September 15, 5pm.

A 18% buyers premium will be added to all purchases.

A \$2,000 refundable security deposit is required upon online registration.

A 25% deposit is required at time of purchase, balance due by Thursday September 16, 2020, 4pm. **NO EXCEPTIONS.**

All goods are sold "As Is, Where Is", **ALL SALES ARE FINAL.** All goods are subject to prior private sale. * Complete terms and conditions will be posted on Bidspotter.com at the auction and will be provided to the bidders at the time of registration.

REMOVAL TIMES

Small and carryout items must be removed within 1 week of sale closing. All remaining items by Friday October 30, 2020 (or as coordinated with Exclusive Rigger). No items may be removed during auction. **NO EXCEPTIONS.**

DIRECTIONS: To 17589 Plant Road, Coosa Pines, Alabama 35078 **From Birmingham-Shuttlesworth International Airport** (Approx 44 Miles 60 Mins). Get on I-20 W/I-59 S from Airport Blvd and Messer Airport Hwy. Take US-280 E to AL-235 N/Coosa Pines Rd in Childersburg. Turn left onto AL-235 N/Coosa Pines Rd. Destination will be on the right.

This brochure is meant merely as a guide. Infinity Asset Solutions makes no guarantee, expressed or implied, as to the accuracy of the information in this brochure. Buyers should inspect the goods beforehand to satisfy themselves.



• **AUCTIONS • LIQUIDATIONS**
• **FINANCING • APPRAISALS**

63 Maplecrete Road, Concord, Ontario L4K 1A5 Canada
infinityassets.com • Tel: (905) 669-8893