

PUBLIC AUCTION



24 Haniak Road, RR2, Thunder Bay,
Ontario, Canada

Multi-Million Dollar State Of The Art Manufacturing Facility Of Disposable Wooden Products Used In Food/Dairy, Paint And Craft Industries



2011

**500K New!
Low Hours**

BIOMASS WOOD FUELLED BOILER SYSTEM



4 Available

JUSAN & CORALI AUTOMATIVE VENEER LATHES



**Popsicle Stick, Corn Dog &
Craft Industries Products**

**State Of The Art
Design & Capacity**

STORMAX ROTARY DRYING/WAX APPLICATION LINES



**12 Automated
Lines**

STORMAX SORTING/PACKING/COUNTING LINES

Auction: Tuesday February 11, 10:30 AM (ET)

Inspection: Monday February 10, 9 AM to 4 PM


**Bid Live Onsite
& Online Via**

BidSpotter.com[®]

 **INFINITY**
Asset Solutions

AUCTIONS • LIQUIDATIONS
FINANCING • APPRAISALS

905.669.8893
infinityassets.com

 Like us at: facebook.com/
Infinity-Asset-Solutions-Inc

 Follow us at: twitter.com/
InfinityAssets

STORMAX ROTARY DRYING, POLISHING & WAXING TUMBLERS



(12) **STORMAX** rotary drying and waxing application line consisting of STORMAX RD rotary tumbler dryer, STORMAX RPW rotary tumbler polisher/waxer, STORMAX MC power conveyor, tank turning power rolls, sorting table and blower units etc.

STORMAX PACKING LINES & SUPPORT EQUIPMENT



14 Available

STORMAX SORTING/PACKING/COUNTING LINES



6 Available

PLC Controls

STORMAX AUTOMATIC DIE PUNCHING MACHINES

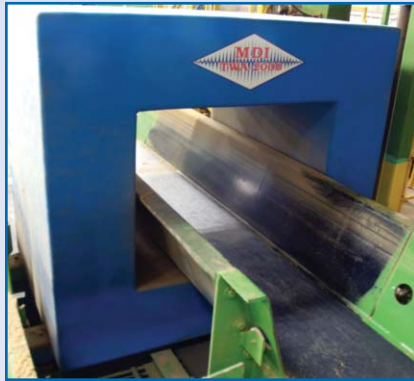


5 Available

STORMAX ER END ROUTER/SHAPERS



FORTRESS PHANTOM METAL DETECTOR



MDI TWA-2000 METAL DETECTOR



SAMPLE OF PRODUCTS PRODUCED AT FACILITY

SORTING & PACKING LINES / DIE PUNCHING / END ROUTERS & SHAPERS

- (6) **STORMAX** automatic die punching machines with SP500 easy clean plus drives with various product dies
- (8) **STORMAX** sorting/packing/counting lines consisting of ALLEN-BRADLEY PANEL VIEW 300 control STORMAX FC
- (3) **STORMAX** sorting/packing/counting line consisting of COGNEY VISON VIEW touch screen PLC control, ALLEN-BRADLEY PANEL VIEW 300 control
- (3) **STORMAX** sorting/packing/counting lines
- (5) **STORMAX** ER end router/shapers

METAL DETECTORS

- MDI** TWA-2000 metal detector with 52"W x 44"H opening with pass through conveyor s/n na
- FORTRESS** PHANTOM pass through metal detector with power conveyor s/n D3656

BIOMASS WOOD FUELLED BOILER SYSTEM

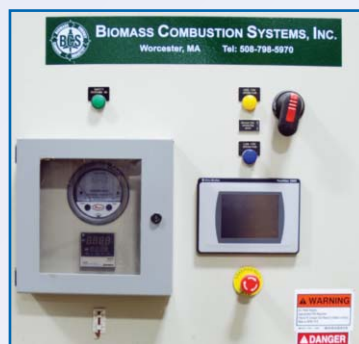
2011

500K NEW

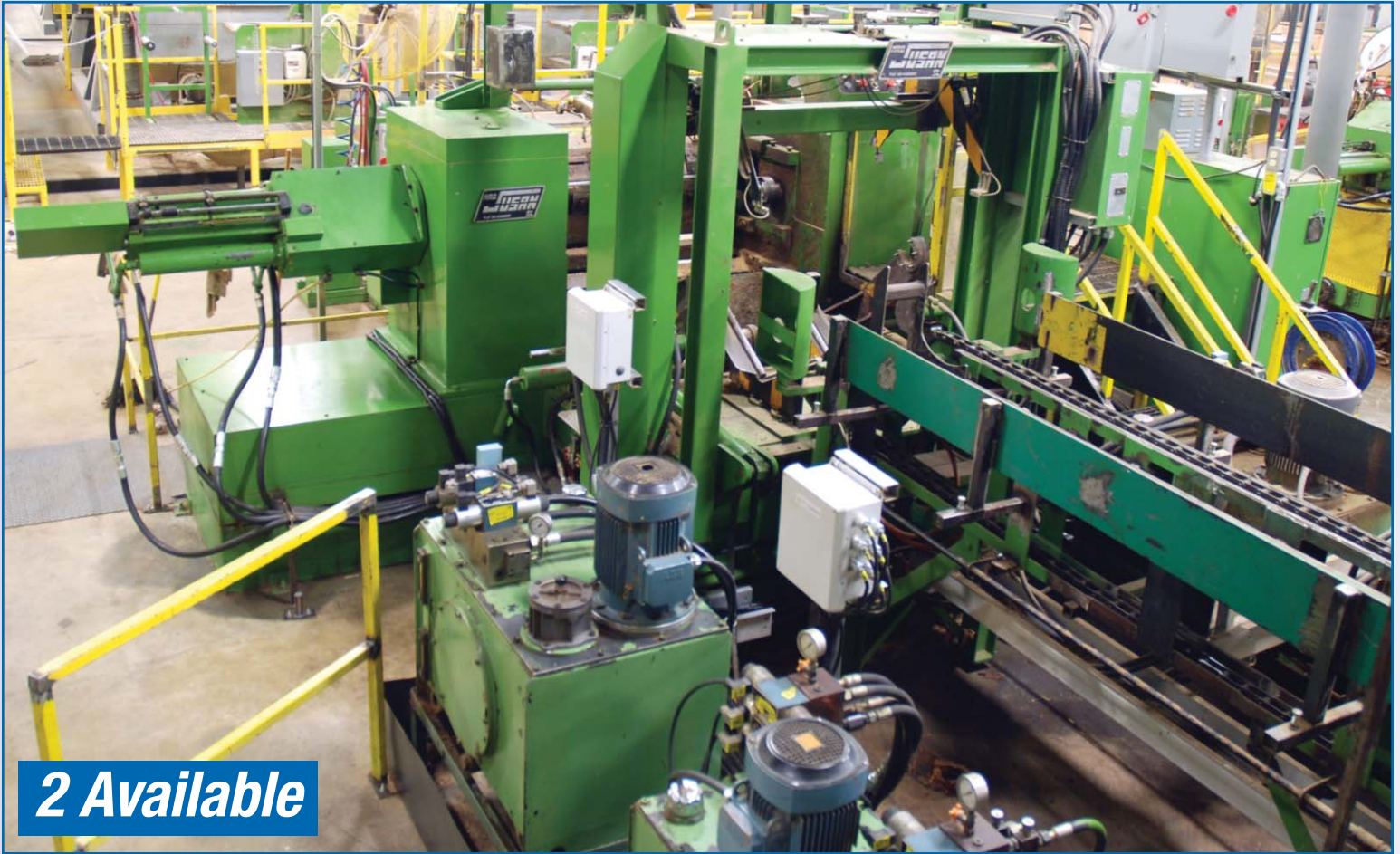
Only Used For 6 Months

WOOD FUELLED BOILER SYSTEM

BIOMASS COMBUSTION SYSTEMS wood burning boiler system with ALLEN-BRADLEY PANELVIEW C600 touch screen control, BOILERSMITH MF3MS-153-150 boiler (2) storage articulating silos, transfer conveyors, water softener, fire detection, temperature controls, 210HP, s/n 52580



VENEER LATHES



2 Available

JUSAN TRH7 TIPO 800 AUTOMATIC VENEER LATHES



2 Available

CORALI M84 AUTOMATIC VENEER LATHES



SIMCA VENEER LATHE



PARTIAL VIEW OF VENEER BLADES

VENEER LATHES

(2) JUSAN TRH7 TIPO 800 automatic veneer lathes with block single index conveyor, feeding conveyor, centering control and winders, hydraulics and transfers s/n 446/89, 207/83

(2) CORALI M84 automatic veneer lathes with block single index conveyor, feeding conveyor, centering control and winders, hydraulics and transfers s/n na

ALSO: Spare blades for veneer lathes

DEBARKERS / SAW / CONVEYORS



MANITOWOC RING DEBARKER



VIEW OF DEBARKER BLADES



MORBARK CHIPPER AND SHAKER TABLE



ESTEPA CUT TO LENGTH SAW



PARTIAL VIEW OF LOG LINE CONVEYORS

DEBARKERS

MANITOWOC ring debarker complete with in feed and out feed conveyors, waste conveyor, live deck, forward and reverse control, 100hp (75hp + 25hp motors), discharge gate, s/n n/a (reference STORMAX DBARKER DB001)

(2) **CARBOTECH** debarkers s/n 01 10 P2401

WOOD GRINDERS & SAW

MORRISON KNUDSEN heavy duty wood hog/grinder s/n BCHP 001

MORBARK heavy duty wood core chipper with shaker table s/n na

PETER JENSEN veneer wood hog/grinder s/n 6056

ESTEPA cut to length chain belt driven saw with hydraulics and controls and assorted conveyors s/n 3613

LOG LOADER & CNC DEPARTMENT

Grapple Attachment



HOOD S182 LOADER



GRIEBEL SAS 75-30-4 HYDRAULIC PRESS BRAKE



MATSUURA MC-760VX CNC VMC



INGERSOLL RAND RS AIR COMPRESSOR



INGERSOLL RAND AIR DRYER



MATSUURA MC-500V CNC VMC



PEDERSEN SURFACE GRINDER

LOG LOADER

HOOD S182 loader with 30ft boom extension, grapple, cab, platform base s/n 187901

CNC DEPARTMENT

MATSUURA MC-760VX CNC vertical machining center with YASNAC CNC control s/n 910109042

MATSUURA MC-500V CNC vertical machining center with YASNAC CNC control s/n 83053260

SCHROFF RHM 1500 CNC lathe s/n 00226-0490/00

CHEVALIER FSG-2A618 automatic surface grinder with 6" x 18" magnetic chuck s/n na 1989
ELMAR LM1500 hydraulic grinder/sharpener with 1500mm max grinding length, tooling etc. s/n 1205

ZEKS 600HSCA500 refrigerated air dryer s/n 90852

INGERSOLL RAND SSR-EP60 rotary screw air compressor with 60hp drive s/n F0460U90

SULLAIR LS-20 100H ACAC rotary screw air compressor with 100hp drive, s/n 003-101697

ALSO: Spare parts and stores are including, switches, nuts, bolts, controls, wires, fittings, brushes, gears, motors, gear reducers, support equipment including stitchers, rotary pallet wrapper, pallet trucks, welders, grinders, carts, power and roller conveyors, shop press, storage bins, horizontal saw etc.



TRAUB CNC TURNING CENTER



BIGSTONE HORIZONTAL BAND SAW

WELL MAINTAINED SUPPORT EQUIPMENT



TAKEDA TK-US2N MILL



PARTIAL VIEW OF WELDERS



Large Qty. Avail.

HUNDREDS OF FEET OF COOPER WIRING

Bid Live ONSITE or ONLINE at
 BidSpotter.com®

FACTORY SUPPORT EQUIPMENT & COPPER CABLE RUNS

1999 **KOGER** 16-2-042 s/n 4355 & INDUSTRIAL AIR products dust collect system with shaker, blowers, motors etc., fire suppression system

(21) **RUFFNECK** AH-16A-B5A1-A1-1C heat exchangers brand new

CIRCLE M12M8D (l) embosser, cutter, sealer power conveyor and counter with (3) **WEST** 800 controls
OGDEN ETR-403 digital temperature controller s/n 799

ALSO: Hundreds of feet of copper cable runs running throughout facility, switch gear (not for services for building), hundreds of pieces of scrap including machinery located outside of building, large qty of motors, stores inventory etc.



PALLET WRAPPER



PARTIAL VIEW OF CARDBOARD



BRAND NEW HEAT EXCHANGERS



Approx. 200

PARTIAL VIEW OF LOCKERS



PARTIAL VIEW OF RAW MATERIAL



VIDMAR CABINETS

TERMS OF SALE



Payment: All payments must be in Cash, Certified Funds, Wire Transfers, or Company Checks, which must be accompanied with a bank letter guaranteeing irrevocable payment to Infinity Asset Solutions Inc. Invoices up to \$2,000 can be paid by Visa, Mastercard or Interac.

All Online bidders must register on Bidspotter by 5pm Monday February 10.

A 15% buyers premium will be added to all onsite purchases (18% Online).

A \$500 refundable security deposit is required upon onsite registration (\$2,000 Online).

A 25% deposit is required at time of purchase, balance due by 4pm Wednesday February 19, 2014. NO EXCEPTIONS.

This brochure is meant merely as a guide. Infinity Asset Solutions makes no guarantee, expressed or implied, as to the accuracy of the information in this brochure. Buyers should inspect the goods beforehand to satisfy themselves.

All goods are sold "As Is, Where Is", ALL SALES ARE FINAL. All subject to prior sale. Complete terms and conditions including removal procedures, are available on our website, will be posted at the auction and will be provided at the time of registration.

REMOVAL TIMES

All Items By Friday February 28th. **Hours:** Monday – Friday between 8 am – 4 pm. No items may be removed during auction. NO EXCEPTIONS.

DIRECTIONS: From Thunder Bay International Airport to 24 Haniak Road, RR2, Thunder Bay, Ontario, P7C4V1 (Approx. 9.6 km, 15 Mins.) Exit Airport, go north on HWY 61 to Arthur Street, head west on Arthur St. and continue to Haniak Rd, make a left (south) on Haniak, watch for Auction Signs.

Member In Good Standing Of:



INDUSTRIAL AUCTIONEERS ASSOCIATION



Like us at: facebook.com/Infinity-Asset-Solutions-Inc



Follow us at: twitter.com/InfinityAssets

AUCTIONS • LIQUIDATIONS • FINANCING • APPRAISALS
 63 Maplecrete Road, Concord, Ontario L4K 1A5 Canada
 infinityassets.com • Tel: (905) 669-8893 • Fax: (905) 669-7512