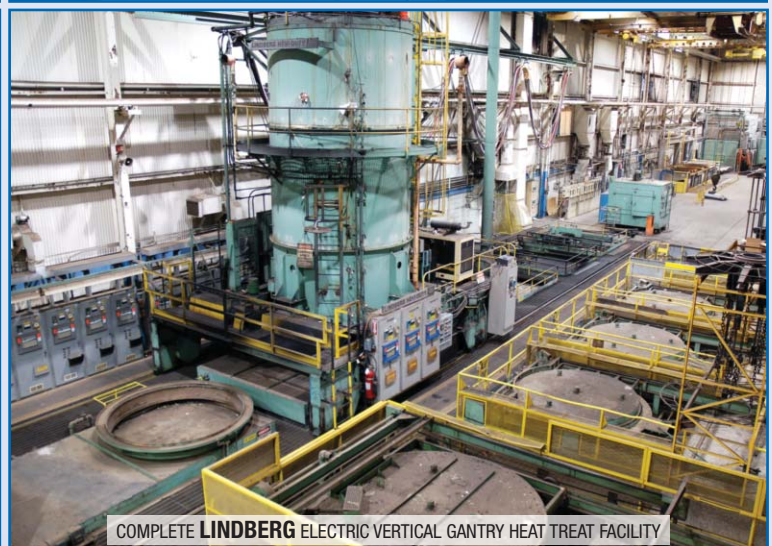


# PUBLIC AUCTION

**GOODRICH**  
Landing Gear

**Complete Plant Closure**  
Large Capacity Boring,  
Machining, Grinding & Heat  
Treating Aerospace Facility.



**2 DAY AUCTION – OVER 2,000 LOTS!**

**Tuesday April 23, 9:30 am & Wednesday April 24, 9:30 am EST**

**Inspection: Monday April 22, 9am-4pm 8000 Marble Ave, Cleveland, Ohio, USA**

**Bid Live Onsite & Online Via Bidspotter.com**

Goodrich will be continuing operations for this division  
at their Tennessee and Canadian operations

 **INFINITY**  
Asset Solutions  
infinityassets.com 905.669.8893  
AUCTIONS • LIQUIDATIONS • FINANCING • APPRAISALS

**M-N A**  
MACHINERY NETWORK AUCTIONS  
AUCTIONEERS | APPRAISERS | LIQUIDATIONS | FINANCING  
888-998-4440 | EMAIL: info@machinerynetworkauctions.com



**Featuring:**

(11) CNC and Conventional **G&L** and **LUCAS** Horizontal Boring Mills

(3) **TACCHI** CNC Gap Bed Lathes up to 155" Sw x 295" CC

**VDF-WOHLBERG** 7 Axis Mill Turn/Center  
63" Sw x 234"

(2) **P&W WILSON** 6 Spindle CNC Profiler Milling Machines

**LANDIS & HERKULES** Large Capacity CNC Cylindrical Grinders

**HEALD** Planetary Internal Grinder

(3) **BARNES & MICROMATIC** Large Capacity Honers

**LINDBERG** Multi Stage Heat Treat Facility  
72" x 192" Part Capacity

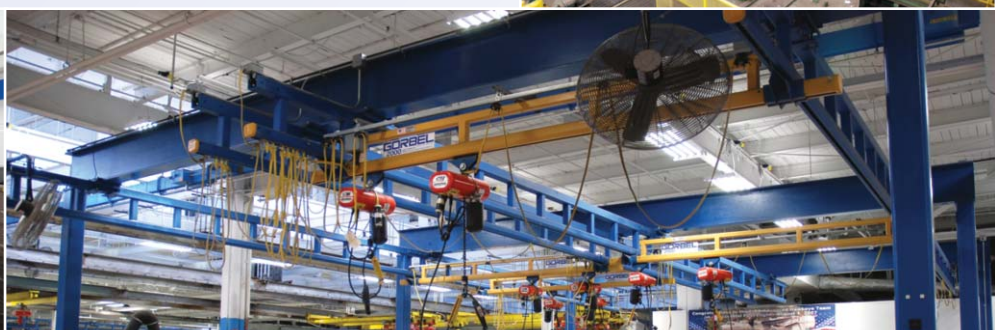
(11) **GORBEL** Modular Bridge Cranes

(53) Overhead Cranes Up To 10 Ton

Huge Quantities of Tooling, Lista Cabinets, Precision Inspection, Support Equipment.

**2 Day Auction, Large Machines Will Be Sold On 1st Day**

Please visit [infinityassets.com](http://infinityassets.com) and [machinerynetworkauctions.com](http://machinerynetworkauctions.com) for complete lot listing and additional details.



# GIDDINGS & LEWIS CNC HORIZONTAL BORING MILL



1993 **GIDDINGS & LEWIS**, Model MC-60, G&L Numeripath 8000B Control, Travels: X-96", Y-74", Z-36", W-43", Bed Length 96", Full 4th Axis, Dual Pallet, Rotary Table Size 60"x60", Table Capacity 30,000 lb, Additional Rotary Table 360,000 Position, 50 Taper, 80 ATC, 6" Spindle, Max 2,500 RPM, CTS, Renishaw OMM Probe, Chip Conveyor, 50 HP, 460V, sn 450-287-92 [232]



Partial View Of 2,000+ Tooling & Components

# 6 GIDDINGS & LEWIS CNC



**2 GIDDINGS & LEWIS,**  
Model PC50, Numeripath  
8000 Control, Travels: X-  
120", Y-72", Z-36", W-  
74", 1 Degree Table Index,  
5" Spindle, Cat 50, Max  
1,100 RPM, CTS, Table  
Size 60"x120", Rotary  
Table 48"x72", Outboard  
Table Supports, Facing  
Head, (Renishaw OMM  
Probe System on 223), 25  
HP, 460V, sn's 445-55-79  
& 445-58-79 [222 & 223]

*This brochure is meant  
merely as a guide.  
Infinity Asset Solutions  
& Machinery Network  
Auctions make no  
guarantee, expressed  
or implied, as to the  
accuracy of the  
information in this  
brochure. Buyers should  
inspect the goods  
beforehand to satisfy  
themselves.*



Approx. 2,000+ Assorted  
Tool Holders & Tooling,  
Plus Large Inventory Of  
Spare Parts For Milling,  
Boring, Grinding, Machining  
Centers, Including: Scales,  
Hydraulic Cylinders, Ball  
Screws, Z Axis Screws,  
X Axis Spindles, Way  
Covers, Motors, Etc.

# HORIZONTAL BORING MILLS



1996 **GIDDINGS & LEWIS** Floor Type Horizontal Boring Mill, Model G60FX, G&L Numeripath 8000 Control, 6 Axis Contouring, Travels: X-240"(20'), Y-91", Z-48", W-72", Programmable 6" Quill, 5-3/4" Spindle, 2 Head Changers, 88 ATC, 1 Degree Table Index, Table Size 72"x144", 30"x80" Fixture Riser Plate, CTS, Chip Conveyor, 480V, sn 455-0074-95 [235]



**GIDDINGS & LEWIS**, Model PC50, Fanuc Series 31i Control, Travels: X-96", Y-72", Z-36", W-72", 1 Degree Table Index, 5" Spindle, Cat 50, Max 1,100 RPM, CTS, Rotary Table 72"x48", Renishaw OMI-2 Probe, 30 HP, 480V, sn 445-61-80 [225]

**Rebuild & Retrofit in 2008 at a cost of \$570,000**



**GIDDINGS & LEWIS**, Model G60-TX, G&L 8000 Control, Travels: X-60", Y-72", Z-36", W-72", Full 4th Axis, 6" Spindle, Cat 50, Max 1,100 RPM, CTS, 60 ATC, Dual Rotary Shuttle Tables 48"x60", Renishaw OMM Probe, 30 HP, 460V, sn 450-16-78 [201]

# LARGE CAPACITY TACCHI CNC LATHES



**8<sup>3</sup>/<sub>4</sub>" Bore - 155" x 295"**



(2) **TACCHI 155" / 36" X 295"**, Model HS 1200 CNC, Siemens Sinumerik System 3 Control, Swing Over Gap 155", Gap Width 59", Swing Over Cross Slide 36", Distance Between Centers 295", 39" 4 Jaw Chuck, 8-3/4" Bore, Max 720 RPM, 8 Station Turret, Steady Rests, Long Boring Bar, Chip Conveyor, sn's 147586 & 147569 [261 & 262]



**56" x 221"**

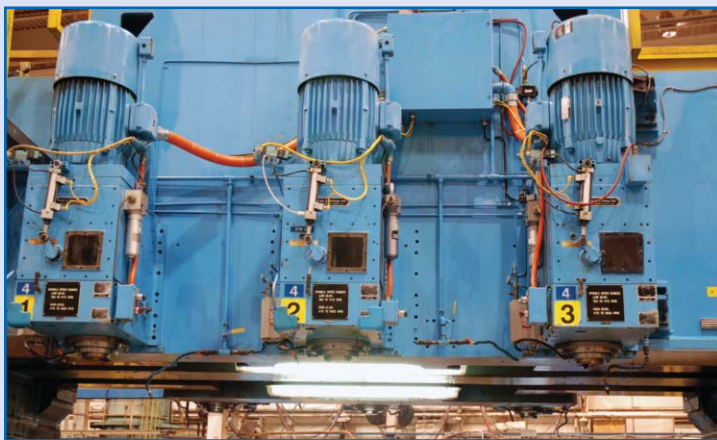


**TACCHI 56" x 221"**, Model HD 1200, 8 Station Turret, Steady Rests, Chip Conveyor, 39" 4 Jaw Chuck, Siemens Sinumerik System 3 Control, 5" Bore, 26.6 – 720 RPM, sn 147556 [264]

# P&W WILSON 6 SPINDLE CNC PROFILE & CONTOUR MILLING MACHINES



1 of 2



**P&W WILSON**, Model MB2Y, Fidia CNC C20/4H Control, Full 3 Axis Contouring, Diagnostic Controls, Travels: X-100", Y-80", Z-24", Distance Between Centers: 45" - 102.6", Clearance Under Bridge 48" Vertical x 166", Table Size: 121"x210", Spindle Diameter 5", Cat 50, **(6) New 30 HP AC Variable Speed Spindle Cartridges Rebuilt in 2009 at a cost of \$180,000**, Speed Range: Low: 150-475 RPM, High 476-1,600 RPM, Dual Chip Conveyors, 440V, sn 281-MB2Y-CR-1016-6-D1512 [743]

**Rebuilt in 2000 at a cost of \$800,000. Upgrades Including:** Fidia C20/4H High Speed CNC Control, CNC Spindle Speed Control and Spindle Drive Motors, Axis Drive & Feedback Systems, Hydraulics, Axis Drive Gear Boxes and Screws, Spindle Drive Transmission, Quills, Ballscrews, Axis Ways, Tychoway Roller Bearings and Gibs, Operators Control Station & Display Panel, Complete Testing of All Movements, Tolerances, Cutting, Calibration, Etc. *Detailed Rebuild Specs Available Upon Request!*

**P&W WILSON**, Model MB2Y, Allen Bradley 9/290 Control, Full 3 Axis Contouring, Travels: X-112", Y-80", Z-24", Distance Between Centers: 45" Across Table, 102.625" Along Table, Clearance Under Bridge 48" Vertical x 166", Table Size: 121"x210", Spindle Diameter 5", Cat 50, **Updated 30 HP AC Variable Speed Spindles**, Speed Range: Low: 16-455 RPM, High 407-1,220 RPM, Dual Chip Conveyors, 440V, sn 262-MB2Y-CR-1016-6-D1512 [739]

# COMPLETE LINDBERG ELECTRIC VERTICAL GANTRY HEAT TREAT FACILITY



**LINDBERG** Hi Heat Gantry Furnace Capable of 15,000 lb Payload, 2,000°F, Max Part Dimension 72" Dia x 16' High (currently processing 4340 material) c/w Kohler 45 Fast Response back-up generator

**Rockwell Automation Provided a Complete Heat Treat Bullet Drive Replacement in 2008**

**LINDBERG** Staging Area (Load/Unload)

**LINDBERG** Pre Heat Furnace 1250°F 72" dia x 16' d

**LINDBERG** Forced Air Quench Furnace 72" dia x 16' d

**LINDBERG** 18,000 gal Oil Quench 72: dia x 16' d c/w Agitators

**LINDBERG** Gas Fired Rinse and separate Lindberg Alkaline Rinse 72" dia x 16' d

**LINDBERG** Salt Quench 72" dia x 16' d

**LINDBERG** (3) Re-Circulating Tempering Furnaces 1400°F 72" dia x 16' d

**LINDBERG** Normalizing Furnace 2000°F 72" dia x 16' d

**LINDBERG** 4500 CFH Endothermic Generator, Lindberg 6000 CFH Exothermic Generator

**ITE** Sub Station, SPS Air Cooled Heat Exchanger – full complement of instrumentation and atmosphere equipment

*This brochure is meant merely as a guide. Infinity Asset Solutions & Machinery Network Auctions make no guarantee, expressed or implied, as to the accuracy of the information in this brochure. Buyers should inspect the goods beforehand to satisfy themselves.*



(2) **LINDBERG** Car Bottom Furnaces (Stress Relief, Bake, Tempering, Age etc.) 8' W x 14'L x 5'H, Working Range 375-575 F



**LINDBERG** Bake Oven, Digital Controller, Temp Chart, Interior Dimension 66"x96"x58", Class IV Type D, TUS Tolerance +/- 25F, Working Range 375-525 F, Temp 250 Deg, Gas Volume 6000 CFH, 440V [403]





**1525 Ton**

**AMD** Pressure Welder, Model 1526-30, 1525 Ton, Control Electronics Model 6152, Center Height From Top Of Table 31", Fixed Platen 99.5"x79", Moving Platen 60"x55", Gap Between Upper Beams 70", Max Part Size 16" x 75", Fixture Carriage, Brooks Instrument DRO, [430]



(2) **AJAX MAGNATHERMIC** Induction Heaters, For Stress Relieving and Homogenizing of Large Welded Parts, 7"x2.5" Heated Platen, 31"x79" Work Tables, Pacer S10 Control, sn HK-2B400-ABD-1 & ABD-2 [906, 907]



**DEA** Delta 3406 DCC CMM, Travels: X-72", Y-120", Z-54", Granite Table Size 60"x120"x18", Renishaw PH10M Probe, sn 3406



**PRECISION INSPECTION** Including:  
**JEOL** Scanning Microscope Model JSM-35CF, 100's of Bore Gauges Up To 60", Lab, Wilson Hardness Tester, Welders, Die Carts, Lista Cabinets, Air Hoses, Work Stations, Fixtures, Components, Precision Granite Tables Up To: 6'x17'x2', 8'x10'x1.5'



**MAGNE-TECH** Gould Bass Magnetic Particle Inspection Unit, Model 3509C-10S, 19' x 38" Bed, Dual 13"x13" Clamp Contacts, Test Bars, sn 083003 [461]

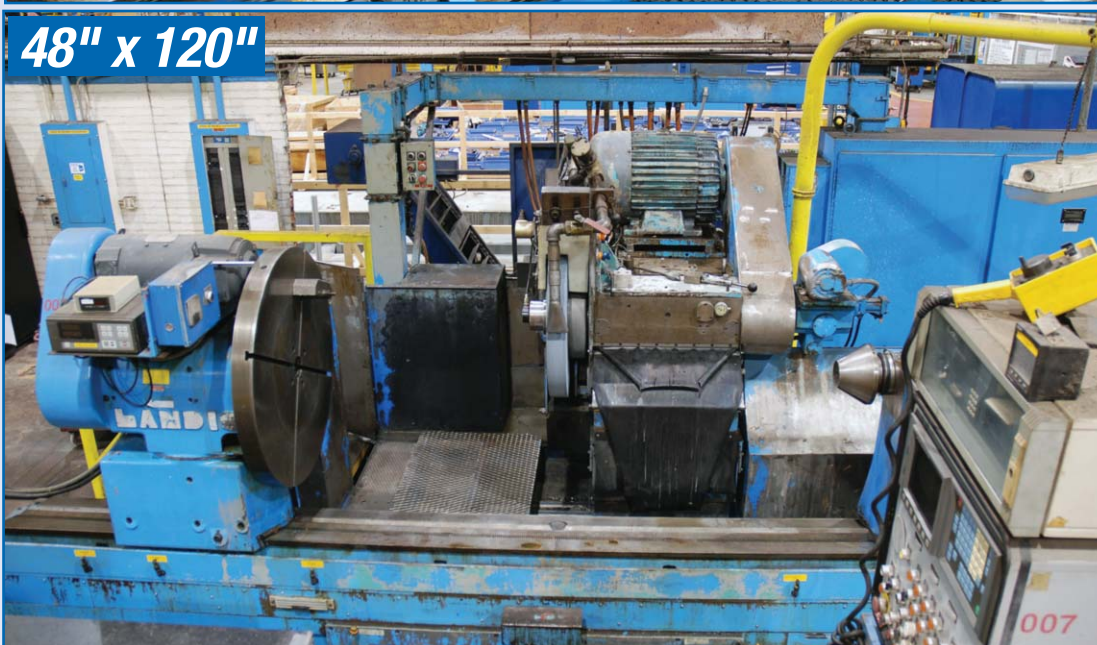
# MULTI AXIS TURNING & GRINDING



**VDF WOHLBERG** 7 Axis CNC Turning Center, Siemens Sinumerik System 8 Control, Swing in Gap 120", Swing Over Bed 63", Swing Over Saddle 50.8", Distance Between Centers 234", Gap Width 63", 39" 4 Jaw Chuck, HP67 Head Stock, 360 Degree B Axis Column, Max 710 RPM, 8 Station Turret, Steady Rest, Follow Rest, Deep Boring Attachments, Boring Bar Pallet Changer, Milling Unit: 5" Spindle, Travels: X-196", Y-25", Z-27.5", 50 Taper, 51 ATC, Max 1,800 RPM, Renishaw M15 Probe System, 35 HP, Chip Conveyor, 480V, [247]



1998 **HERKULES** 24" x 120" Capacity CNC OD Grinder, Model WS450-BL x 3.5 CNC, Siemens Sinumerik 840D Control, 36" 8 Jaw Chuck, 3"x30" Grinding Wheel, 480V, sn 82580-311/97 [10]



**LANDIS** 48"x120" Capacity CNC OD Grinder, Model CHW, Type 48-120, Fanuc ODGC Control, 36" 4 Jaw Chuck, Tailstock, 480V, sn 832-20 [7]

**HEALD** Planetary Internal Grinder Model 5650, Table Approx. 68"x107", 36" Mandrel, ID Grind Capacities, Min Dia - 4.5", Max Dia - 6", Max Depth - 23", Heavy Duty Spindles & Arms 4.5" - 34-7/8", Transverse Adjustment of Cross Slide 36", Vertical Adjustment 5/16" - 1", Table Travel 40", Orbital Radius 1/16" - 1-9/16", Eccentric Adjustment on Radius, 4" Hollow Inner Eccentric DC Planetary Grinding Head Drive, sn 44009 Heald # A-3529, Prop #B-91-7-0306 [773]

# BORING MILLS & HORIZONTAL MACHINING CENTERS



(2) **LUCAS** CNC Horizontal Boring Mills, Model 30T65, GE Mark Century 2000 Control, Table Size 4'x6', 4'x6' Rotary Table, Travels: X-72", Y-60", Z-36", W-48", CTS, 460V, sn's 30T1302 & 30T1303 [180 & 181]



**LUCAS** Model 542B120, Travels: X-108", Y-60", Z-84", Table Size 56"x122", Additional Rotary Table Size 60"x96", 5" Spindle Dia, Cat 50, Max 1,220 RPM, CTS, Drawbar, Renishaw Probe, 35 HP, 460V, sn 42B4208 [708]



**LUCAS** Model 42B-60, Table Size 86"x48", Travels: X-74", Y-36", Z-84", Spindle Dia 5", CTS, Drawbar, 10-1,220 RPM, 25 HP, 460V, sn 42B4234 [9]



**LUCAS** Model 542B120, Travels: X-108", Y-36", Z-84", Table Size 56"x122", 5" Spindle Dia, Cat 50, Max 1,220 RPM, CTS, Drawbar, Renishaw Probe, 35 HP, 460V, sn 42B4126 [709]



**KEARNEY & TRECKER** 5 Axis Machining Center, Model Modu-Line, System Gemini Control, Dual 40"x40" Pallets, 50 Taper, 39 ATC, Chip Conveyor, sn 4885121 [196]



(2) **KEARNEY & TRECKER** 5 Axis Machining Centers, Model Maxi-Bar, Gemini D17 Control, Dual 10'x6' Rotary Shuttle Tables, Travels: X-133", Y-96", Z-48", 6" Spindle, Cat 60, 144 ATC, U-Axis Capability, D'Andrea Facing Head, 20" Max Dia., Full 5 Axis Contouring, Spindle Speed Range 8-1,570 RPM, CTS, Drawbar, Renishaw MP-9 Probe, Chip Conveyor, DC Axis Drive Servos, 50 HP, 480V, sn's 8787267 & 8784254 [197 & 199]

*Note: sn 8784254, Machine 199 is a parts machine*



**10' Stroke**

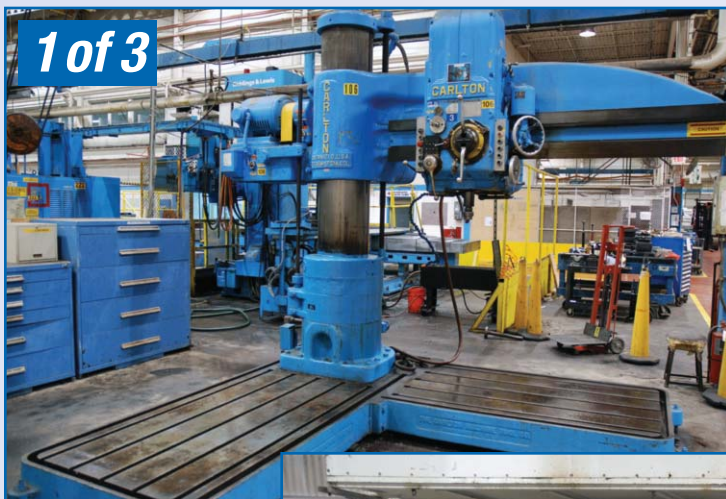
**BARNES** Vertical Hone, Stroke Length 120", Table Travel 56", Clearance Under Spindle 194.75", Table Size 60"x72", Max Part Size 86" OD, 140" Long x 54" Deep, Max Hole Size 19.5" Dia, Lift A Loft Shuttle Scissor Lift, 480 V, sn SP-EC-8530-10462 [706]



**MICROMATIC** Vertical Hone, Stroke 65", Table Travel 96", Clearance Under Spindle 81", Table Size 48"x96", Max Part Size 48" Dia, 81"x65" Deep, Max Hole Size 12" Dia, 480V, sn 102 [704]



**MICROMATIC** Hone Model 15V65 Hydrohoner, Stroke Length 65", Table Travel 96", Clearance Under Spindle 81", Table Size 48"x96", Max Part Size 48" OD, 81" Long x 65" Deep, Max Hole Size 12" Dia, 480V, sn 104 [779]



**1 of 3**

(2) **CARLTON** 7', 17" Radial Arm Drills, Heavy Duty 17" Column, L Shape Base, Box Table, Max 1,500 RPM, #5/#6 Morse Taper, 480V [59], sn 3A3761 [106]  
**BICKFORD** 9', 19" Radial Arm Drill Model 956-190-68, Spindle Speed Range 8-1,000 RPM, 480V, Column Dia 19", sn 190 [782]

**This Facility Spent \$8 Million Per Year on Equipment Upgrades & Maintenance**

Bid ONLINE at [BidSpotter.com](http://BidSpotter.com)

**NARDINI** 25" x 198" Gap Bed Lathe, Model IN25200T, Swing Over Gap 34", 19.5" 3 Jaw Chuck, 4-3/4" Bore, Speed Range 16-1,250 RPM, Steady Rests, Follow Rest, Tailstock, 20 HP, sn C5-HJS-208 [1216]



**25" x 198"**



**PAINT DEPT**

Line 1: Paint [478], Bake [485], Dry [487]

Line 2: Paint [483], Bake [486], Dry [488]

**1 of 2 Paint Lines**

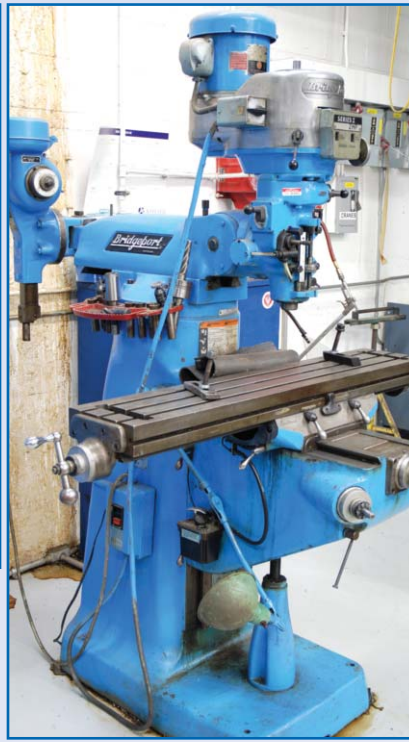
2005 **SPRAY SYSTEMS** Down Draft Paint Booth, Inside Dimensions: 20'x14'x10'9", 18 Ga G90 Galvanized Steel Construction, 2 Sets Solid Steel Sliding Doors 10'9"x6', Side Access Door, Lighting, 12,000 CFM Exhaust Fan, 3 Stage Exhaust Filters, sn 7436 [478], **BINKS** Paint Booth Approx. 15'x18'x6'+6' Peaked Conveyor Portion, Andreae Filter Exhaust Chamber, [483], Pass Through Dry Quick Ceramic Infra-Red Bake Ovens [485 & 486], Air Blower Dry Station, 10'x10' [487 & 488], Approx. 500' I-Beam Overhead Monorail Conveyor System



Sand Blast Booth, Interior Dimensions 21'x12'x10', Shuttle Cart 5'6"x9', CO Detector, Clemco Abrasive Classic 150 PSI Tank, Model 2452, 6 CF Cap, United Air Specialist Dust Hog, Model FSH-32-4, Supra IQ Diagnostics Panel, 50 HP, sn 60033793 [771]



12 Station Grinding Room: Manual Grinding, Downdraft Tables – Huge Selection Grinding Wheels, Grinding Guns Up To 10', Sanding 2 **TORIT** Model DF 04-64, 75 HP, 16 Filter Unit (each), Auger System, Allen Bradley Power Flex 400 Controls, sn 2514771-1, Noise Curtains, (on mezzanine) Control Panel on Main Floor [588, 589]



## TOOLROOM & MAINTENANCE

(2) **KONDIA** Mills, 9"x48" Table, Power X, Acurite 2 Axis DRO, 60-4,000 RPM, sn S-670, S-671, **BRIDGEPORT** Mill Series I – Shaping Attachment, **LEBLOND** Regal Lathe, **DAKE** Model VH40 Vertical Bandsaw, 26"x26" Table, 40" Throat, Blade Welder, Marvel Model #8 Tilt Frame Bandsaw, Horizontal Bandsaw, Delta Radial Saw, Makita Chop Saws, Huge Quantity Hardware, Components, Dozens of **LISTA & VIDMAR** Cabinets, **LISTA** Work Tables, Parts, **WALKER** 50 Ton H Frame Press, **PARKER** Wire Crimper, Arbor Press, **LINCOLN** Geared Head Drill, **K.O.LEE** 8"x12" Surface Grinder – Neutrofier II, Double Sided Grinders, Steel Work Tables, 3 **RIDGID** Threaders, Job Boxes, Hoses & Reels, **LINCOLN** Weldan Power G8000 Gas Welder, **LINCOLN** Idealarc SP250, **MILLERMATIC** Mig Welder, Industrial Shop Fans, Oxyacetylene Torches, Mag Drills, Bearings, Motors, Fans, Drives, Lockers, (2) Floor Scales 7'x5' & 4'x4', DRO's, Portable Offices, Job Boxes, Belt Grinders, Pedestal Vises, (10) Flame Storage Cabinets, Steel Transportation Frames, Huge Quantity of EMT Conduit Up To 3", Copper Ground Rods, Copper Tube Up To 3", PVC, Etc.



(5) HT NITAL ETCH EQUIPMENT DIP TANKS



(4) AQUEOUS DEGREASE HOT WATER RINSE TANKS



(2) METCHEM AQUEOUS WASH SYSTEM TANKS



(3) TORIT DUST COLLECTORS MODEL DWS-4, 5 HP



TORIT / IWI INC DUST CONTROL BOOTH



ACS DOWNDRAFT TABLE



QUINCY 300 HP AIR COMPRESSOR



WATER MAZE WATER TREATMENT SYSTEMS, MODEL HBG 30



PARKER AIRTEK 1600 SCFM AIR DRYER



XYBEX FLUID CLEANING SYSTEM



MOBILE SUMP PUMP

## DIP TANKS

(5) HT NITAL ETCH Equipment Dip Tanks  
Approx 64"x64"x26'  
Nitric Acid, 5,000 Gallon, Tag 01555  
Cold Water Rinse, 5,000 Gallon, Tag 01556  
Hydrochloric Acid 5,000 Gallon, Tag 01557  
Hot Water Rinse, 5,000 Gallon, Tag 01558  
Alakali, 5,000 Gallon, Tag 01559  
(4) Aqueous Degrease Hot Water Rinse  
Tanks 8'x15'7" x 8' & Wash Stations [801  
& 802]

(2) METCHEM Aqueous Wash System Tanks,  
Approx. 10'x15'x16', Control Panel [803]  
4 IFH Group Oil Storage Units, Model HDS  
4-054100, 65 Gallon Capacity (each)

## DUST COLLECTION

TORIT / IWI Inc Dust Control Booth, Model  
ECB-1 & 2, 15'x15' Clear Enclosure, 5 HP,  
1,000 lb Gorbelt Crane System, sn's  
B1000-11T, B802-169M [302 & 304]  
(3) TORIT Model DWS-4, 5 HP, sn 2240182  
(3) IWI 3 Module System, sn B499-27T  
[301]

AIR CLEANING SYSTEMS Inc 32"x38"  
Downdraft Table  
Smoke Hogs, Dust Collectors

## AIR COMPRESSORS

QUINCY 300 HP Air Compressor, Model  
QSI 1500 NW32FD, sn 95775H  
(2) QUINCY 150 HP Air Compressors Model  
QSI-750, sn 90702HQS1750ACA31EB  
PARKER AIRTEK 1600 SCFM Air Dryer,  
Model SCP1500-A4, sn 101001092  
QUINCY QIFD Air Dryer  
2 QUINCY QIOW-0060 Oil Filters  
Receiving Tanks

## STORAGE

(2) KARDEX & LEKTRIEVER Inventory  
Storage Carousels, Powered Component  
& Raw Material Wire Storage Carousel  
25"Wx10'Hx18"D x 35 Station, Powered  
Tooling Storage Carousel 44 Stations  
18"x8", 26 Assorted A-Frame Tooling Carts,  
Assorted Pallet & Gravity Feed Racking,  
40"x60" Stacking Frames, Cabinets, Etc.

## ROLLING STOCK

TOYOTA 5,000 lb Cap Propane Forklift,  
Model 42 6FGCU25, 2 Stage Mast, sn  
81095  
BAKER 3,000 lb Cap Electric Forklift, 3  
Stage Mast, 3 Wheel  
5 YALE Electric Pallet Jacks, Up To  
8,000 lb Capacity, & Forks Up To 8'  
Floor Sweeper

Bid Live ONSITE or ONLINE at

**BidSpotter.com**



1 of 53 Cranes

Up To 10 Ton

(53) Cranes By: **WHITING, HOIST EQUIPMENT, WRIGHT, COFFING:**

Approx:

- (2) 10 Ton x 45' Double Girder
- (2) 10 Ton x 36' Double Girder
- (8) 5 Ton x 45' Single Girder
- (24) 5 Ton x 36' Single Girder
- (7) 2 Ton x 36' Single Girder
- (11) **GORBEL** Modular Bridge Cranes, Up To 4,000 lb, Approx: 35'x15'x15', 28'x35'x15', 16'x30'x25'



1 of 11

**GORBEL** FREESTANDING MODULAR CRANES



1 of 2

INVENTORY STORAGE CAROUSEL



1 of 2

**TOYOTA** 5,000 LB CAP FORKLIFT

Bid ONLINE at



**WATER / OIL / WASTE TREATMENT**

Water Maze Water Treatment Systems, Model HBG 30 Evaporation System, 2 Oil Recovery Tanks, Metal Filtration [625]

**XYBEX** Master Chemical Corporation, Chemical Metal Working Fluid Sludge Cleaning System, Complete Water R/O System, 500 Gallon Tank, Mobile Sump Pump Mounted on Power Cart, Oil Storage Tanks, Fixed, Portable, Etc

**OFFICE**

Complete Offering of Office Furniture & Equipment, Desks, Chairs, Filing Cabinets, Cubicle Desk Stations, Cafeteria Prep Tables, Oven & Pizza Carousel, 2 Burner Stove, Cabinets, Sinks & More!

*This brochure is meant merely as a guide. Infinity Asset Solutions and Machinery Network Auctions make no guarantee, expressed or implied, as to the accuracy of the information in this brochure. Buyers should inspect the goods beforehand to satisfy themselves.*

**TERMS OF SALE**

**Payment:** All payments must be in Cash, Certified Funds, Wire Transfers or Company Checks must be accompanied with a bank letter guaranteeing irrevocable payment to Infinity Asset Solutions Inc.

All Online bidders must register on Bidspotter by 5pm Monday, April 22nd.

A 15% buyers premium will be added to all onsite purchases (18% Online).

A \$2,000 refundable security deposit is required upon online registration.

A 25% deposit is required at time of purchase, balance due by 4 pm day after purchase date. **NO EXCEPTIONS.**

All goods are sold "As Is, Where Is", ALL SALES ARE FINAL. All subject to prior sale. Complete terms and conditions including removal procedures, are available on our website, will be posted at the auction and will be provided at the time of registration.

State of Ohio Auction License: 2002000001

**REMOVAL TIMES**

Small Items: Wednesday May 1st, Large Machines: Wednesday May 15th,

Cranes: Friday May 24th. **Hours:** Monday – Friday between 8 am – 4 pm.

No items may be removed during auction. **NO EXCEPTIONS.**

**DIRECTIONS:** From Cleveland Airport to 8000 Marble Avenue, Cleveland, Ohio, 44105. Approx 14 Mi, 20 Mins.

Head south on Upper Dr toward Park Rd, Slight left toward OH-237 N, Turn left onto the ramp to OH-237 N, Keep left at the fork, follow signs and merge onto OH-237 N, Continue onto Berea Fwy, Merge onto I-71 N, Take exit 247A for I-90 W/I-490 E, Take exit 247B to merge onto I-490 E toward I-77, Take exit 2A to merge onto OH-14 E/Broadway Ave toward Broadway, Turn left onto Marble Ave, Destination will be on the right.

**HOTELS NEAR AUCTION SITE:**

|                       |                                            |              |
|-----------------------|--------------------------------------------|--------------|
| <b>Embassy Suites</b> | 5800 Rockside Woods Blvd, Independence, OH | 216-986-9900 |
| <b>DoubleTree</b>     | 6200 Quarry Ln, Independence, OH           | 216-447-1300 |
| <b>Holiday Inn</b>    | 6001 Rockside Rd, Independence, OH         | 216-524-8050 |

Member In Good Standing Of:



**INFINITY**  
Asset Solutions  
infinityassets.com 905.669.8893  
AUCTIONS • LIQUIDATIONS • FINANCING • APPRAISALS

**M-N-A**  
MACHINERY NETWORK AUCTIONS

AUCTIONEERS | APPRAISERS | LIQUIDATIONS | FINANCING  
888-998-4440 | EMAIL: info@machinerynetworkauctions.com