

# PUBLIC AUCTION



## GRAN PACKAGING

255 Brimley Road,  
Scarborough (Toronto),  
Ontario, Canada

**Complete Late Model Plastic Bag Manufacturing & Printing Facility**

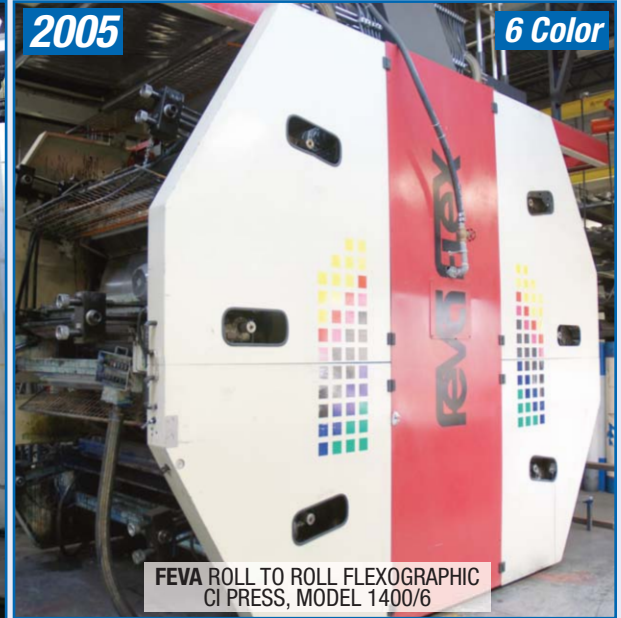


**2004**

**8 Color**

**Completely Refurbished in 2010**

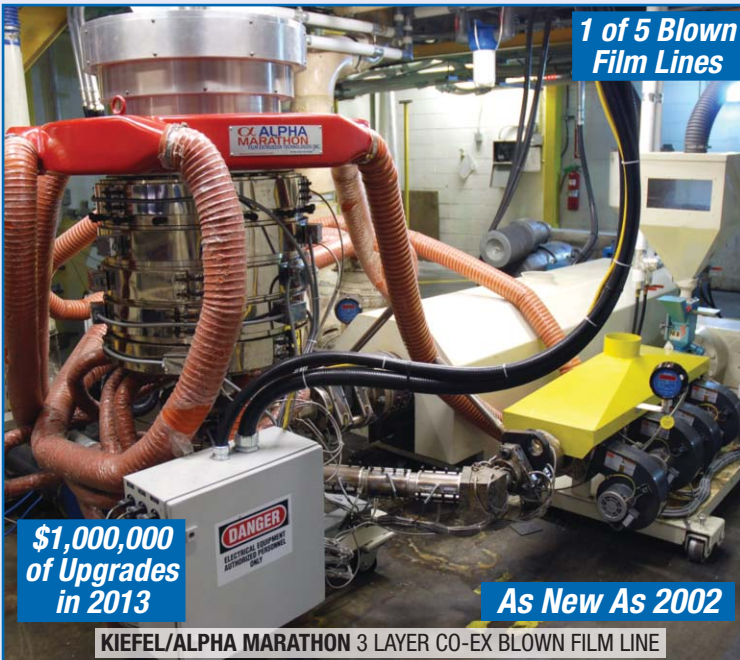
UTECO EMERALD ROLL TO ROLL FLEXOGRAPHIC CI PRESS, MODEL 812.4M PLUS SDG



**2005**

**6 Color**

FEVA ROLL TO ROLL FLEXOGRAPHIC CI PRESS, MODEL 1400/6



**1 of 5 Blown  
Film Lines**

**\$1,000,000  
of Upgrades  
in 2013**

**As New As 2002**

KIEFEL/ALPHA MARATHON 3 LAYER CO-EX BLOWN FILM LINE



**1 of 8 Bag Lines**

SALDOFLEX T-SHIRT & MERCHANDISE BAG LINE

**Auction: Tuesday June 24, 10:30 AM (ET)**

**Inspection: Monday June 23, 9 AM to 4 PM**

**Bid Live Onsite  
& Online Via**

**BidSpotter.com®**



**INFINITY**  
Asset Solutions

[infinityassets.com](http://infinityassets.com) 905.669.8893

AUCTIONS • LIQUIDATIONS • FINANCING • APPRAISALS

**PERRYVIDEX**

since 1932

[www.perryvidex.com](http://www.perryvidex.com) • 1.609.267.1600

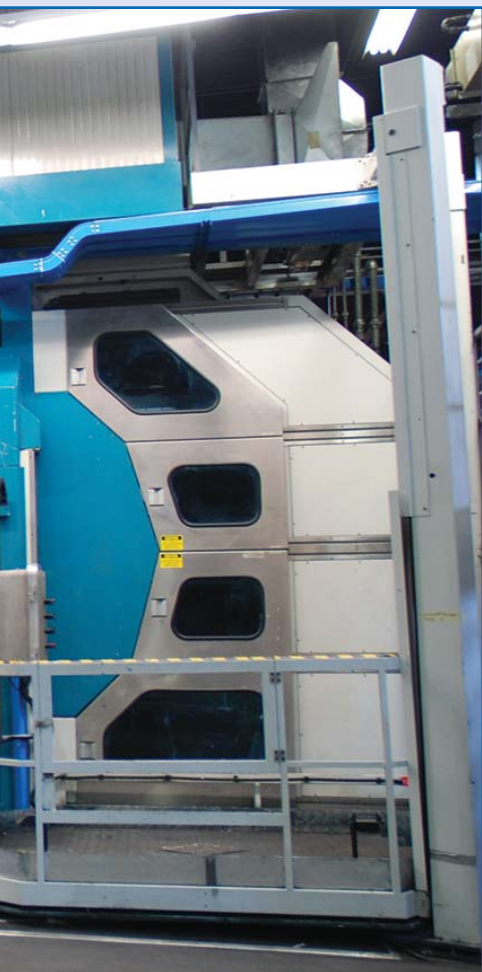
**2004**



***Completely Refurbished in 2010***

**2005**





**UTECO Emerald 8 Color Roll to Roll Flexographic CI Press**, Model 812.4M Plus SDG, Material Run: Polyethylene Film, Polyester and Polypropylene, Gauge: 1 mil to 5.9 mil, 0.7 mil Polypropylene and Coex, Print Capability: 8+0, Has Turnbar for 4+4, Repeat Range: 19.5" - 47.2", Web Width Range: 42" - 65", Max Print Width: 63", Max Speed: 1,000 FPM, Surface or Reverse, Photopolymer Plates, Solvent Based Inks, Dr. Blades, Ceramic Anilox Rollers, Print: Gearless, Sleeves With Anilox Sleeves, Platforms: Powered Dual Operator Elevator, Gas Dryer, Hot Air On Web, Between Deck Drying, Overhead Dryer, Hot Air Recovery & Circulation, Dual Unwind & Rewind: Max Roll Diameter 39.4", Options: Auto Viscosity Control, Auto Washup, Built In Chiller, BST Premium Camera System with UPC Reader and Verification, Auto Error Detection, sn 1865

*This brochure is meant merely as a guide. Infinity Asset Solutions & PerryVidex make no guarantee, expressed or implied, as to the accuracy of the information in this brochure. Buyers should inspect the goods beforehand to satisfy themselves.*



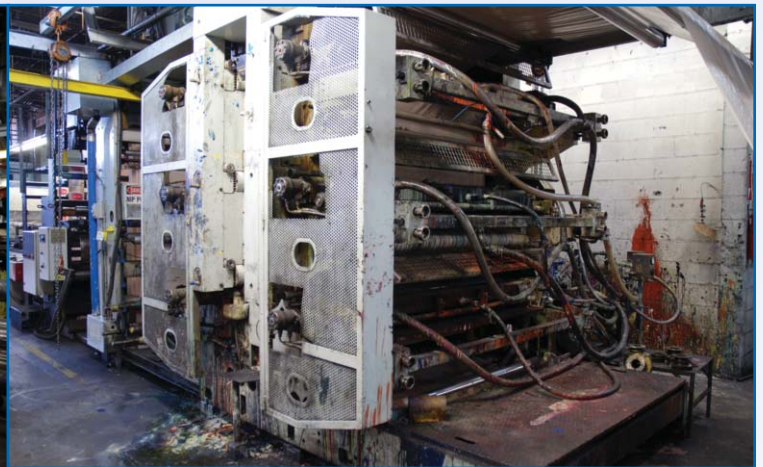
**FEVA 6 Color Roll to Roll Flexographic CI Press**, Model 1400/6, Material Run: Polyethylene Film, Gauge: 0.7 mil to 5 mil, Repeat Range: 14.5" - 43", Web Width Range: 42" - 63", Print Width: 61", Max Speed: 850 FPM, Surface or Reverse, Photopolymer Plates, Solvent Based Inks, Dr. Blades, Ceramic Anilox Rollers, Print: Geared Print: 5mm Pitch with Cylinders with/out Sleeves, Gas Dryer, Hot Air On Web, Between Deck Drying, Overhead Dryer, Hot Air Recovery & Circulation, 2 Position Unwind & Rewind: Max Roll Diameter 31.5", Options: Auto Viscosity Control Attachment, Built In Chiller, BST Premium Digital 3 Chip Camera System, UPC Reader, Verification, Auto Error Detection, Cylinders & Gears Available

Bid ONLINE at  **BidSpotter.com**<sup>®</sup>

# LATE MODEL T-SHIRT & MERCHANDISE BAG LINES



2002 SALDOFLEX T-SHIRT & MERCHANDISE BAG LINE WITH AUTOPACK, FILIPPINI & PAGANINI 6 COLOR PRESS 63" WEB WIDTH, UP TO 300 BAGS/MIN (LINE 1)



1996 LEMO MERCHANDISE BAG LINE, UTECO 6 COLOR PRESS, 63" WEB WIDTH, UP TO 250 BAGS/MIN (LINE 9)



1996 **LEMO** T-SHIRT BAG LINE, **UTECO** 6 COLOR PRESS, 63" WEB WIDTH, 250 BAGS/MIN (LINE 3)



1996 **LEMO** T-SHIRT BAG LINE, **UTECO** 6 COLOR PRESS, 63" WEB WIDTH, 250 BAGS/MIN (LINE 4)



2000 **SALDOFLEX** T-SHIRT & MERCHANDISE BAG LINE, **FILIPPINI & PAGANINI** 6 COLOR PRESS, 63" WEB WIDTH, 275 BAGS/MIN (LINE 5)



1999 **SALDOFLEX** T-SHIRT & MERCHANDISE BAG LINE, **UTECO** 6 COLOR PRESS, 63" WEB WIDTH, 250 BAGS/MIN (LINE 6)



1996 **LEMO** T-SHIRT BAG LINE, **UTECO** 6 COLOR PRESS, 60" WEB WIDTH, 250 BAGS/MIN (LINE 7)



1996 **LEMO** T-SHIRT BAG LINE, **UTECO** 4 COLOR PRESS, 60" WEB WIDTH, 250 BAGS/MIN (LINE 8)

# Bag Machine & Printing Line Specifications

LINE	1	3	4	5	6	7	8	9
<b>OEM</b>	<b>Saldoflex</b>	<b>Lemo</b>	<b>Lemo</b>	<b>Saldoflex</b>	<b>Saldoflex</b>	<b>Lemo</b>	<b>Lemo</b>	<b>Lemo</b>
<b>Type</b>	T-Shirt & Merchandise w/ Autopack	T-Shirt	T-Shirt	T-Shirt & Merchandise	T-Shirt & Merchandise	T-Shirt	T-Shirt	Merchandise
<b>Year</b>	2002	1996	1996	2000	1999	1996	1996	1996
<b># Webs Across</b>	3	3	3	3	2	3	3	5 (Max 6)
<b>Max Web Width</b>	43.3"	43.3"	43.3"	43.3"	43.3"	43.3"	43.3"	53.1"
<b>Max Bags/Min</b>	300	250	250	275	250	250	250	250
<b>Handle Punch</b>	Hydraulic	Chain driven	Chain driven	Hydraulic	Hydraulic	Chain driven	Chain driven	Chain driven
<b>Slit Seal / Post Gusset 3 Up</b>	Yes	Yes	Yes	Yes	Yes	Yes	Yes	Yes
<b>Punch Scrap Conveyor</b>	Yes	Yes	Yes	Yes	Yes	Yes	Yes	Yes
<b>Sealing System</b>	Glow band	Hot Bar	Hot Bar	Glow band	Glow band	Hot Bar	Hot Bar	Hot Bar
<b>Unwind</b>	Shaftless Surface Driven Floor Pickup 50" OD	Surface Driven Floor Pickup 48" OD	Surface Driven Floor Pickup 48" OD	Shaftless Surface Driven Floor Pickup 50" OD	Shaftless Surface Driven Floor Pickup 50" OD	Surface Driven Floor Pickup 48" OD	Surface Driven Floor Pickup 48" OD	Surface Driven Floor Pickup 48" OD
<b>Press OEM</b>	<b>Filippini &amp; Paganini</b>	<b>Uteco</b>	<b>Uteco</b>	<b>Filippini &amp; Paganini</b>	<b>Uteco</b>	<b>Uteco</b>	<b>Uteco</b>	<b>Uteco</b>
<b># Of Colours</b>	6	6	6	6	6	6	4	6
<b>Max Web Width</b>	63"	63"	63"	63"	63"	60"	60"	63"
<b>Max Repeat</b>	36"	36"	36"	36"	36"	36"	36"	36"
<b>Press Type</b>	Stacked, Geared, Sleeve	Stacked, Geared cylinder	Stacked, Geared cylinder	Stacked, Geared, Sleeve	Stacked, Geared cylinder	Stacked, Geared cylinder	Stacked, Geared cylinder	Stacked, Geared cylinder
<b>Ink System</b>	Doctor blade Ink Chamber	Rubber Roll	Rubber Roll	Doctor Blade Ink Chamber	Rubber Roll	Rubber Roll	Rubber Roll	Doctor blade Ink chamber
<b>Drying</b>	Gas	Gas	Gas	Gas	Gas	Electric	Electric	Gas
<b>Power Requirements</b>	600V, 60 HZ 3 P	600V, 60 HZ 3 P	600V, 60 HZ 3 P	600V, 60 HZ 3 P	600V, 60 HZ 3 P	600V, 60 HZ 3 P	600V, 60 HZ 3 P	600V, 60 HZ 3 P

## PROXY BIDDING

We will be happy to bid on your behalf if you are unable to attend our auction. Please call our office at 905-669-8893, or visit our website [www.infinityassets.com](http://www.infinityassets.com) to submit a proxy bid.

2008



2008 **DEACRO** Slitter Model C610B-185, Duplex Cantilevered Re-Winder, Max Unwind OD 50", Unwind & Rewind Core Size 3", 48" Diameter, Max Unwind Roll Weight 5,000 lbs, Shaftless Floor Pickup Unwind, Max Web 70", Slit Width Range 1" – 70", Max Speed 1,500 FPM, Film Gauge Range 0.45 mil - 7 mil, Edge or Line Guide, Max Rewind Roll OD 24", Trim System, 10 HP Blower, Unloading Cart, sn 1596-562

### PRINT SUPPORT

**DUSENBERY** Core Cutter, 48", 3" Mandrel Manual Sleeve Rack, Approx. Dimensions: 12'x12'x14'  
Spare BST Genius Camera System  
Spare Parts Room

### EXTRUSION SUPPORT

**KIEFEL** 9" Die on Cart, Chimney, **KIEFEL** 9 Zone Line Control Panel, 2004 **EXACT** Evolution Model 10 Film Cutter, sn 9273, Asst. **KIEFEL** 100 mm Screws, **FUTURE DESIGN** Air Ring - 10", Single Lip, Approx 50 - 3" ID 63" Steel Cores, Spare **PILLAR** Ceramic Rolls

### BAG MACHINE SUPPORT

InkSpec Viscosity Control Model 11-16, sn 96P0587, Cylinders Available for Utecos: 44 - 60", 133- 63", Sleeves Available for Fillipinis: 60, 2 Cylinder Cantilever Racks & 2 Crane Systems: Dual 1/4 Ton Approx 15'x12'x15' & 12'x30x15'

### LABORATORY

**QUALITEST** Series 8000 Drop Impact Tester  
**OAKLAND** Shrink Tester  
**SOLVETECH** Precision Profiler Thickness Tester, Model PR 2000B, PC

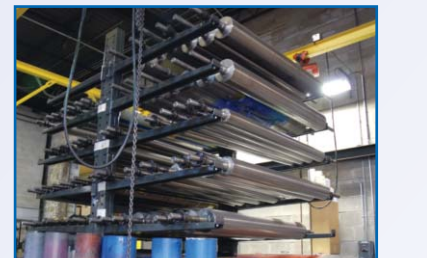


*Reprocessing Line Approx 2000 Vintage*

**FKI** 100 mm Complete Reprocessing Line, Including: Motivation 1,000 lb Gaylord Tilter, Infeed Conveyor, Metal Detector, 100 HP Compactor, 125 HP Extruder, 115" Barrel, 28:1, Vent, Hydraulic 150 mm Screen Changer, Water Ring Pelletizer, Shaker Classifier, Cyclone & Blower



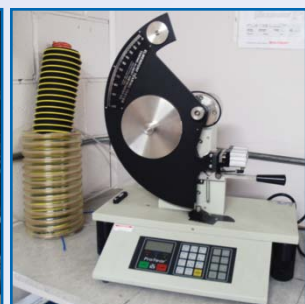
2005 CAMERA MOUNTER



VIEW OF CYLINDERS



SLEEVE RACK



ELMENDORF TEARING TESTER



GARDNER HAZE-GARD PLUS OPTICAL TESTER



QUALITEST SERIES 7000 FILM FRICTION TESTER

# KIEFEL / ALPHA MARATHON 3 LAYER CO-EX BLOWN FILM LINE

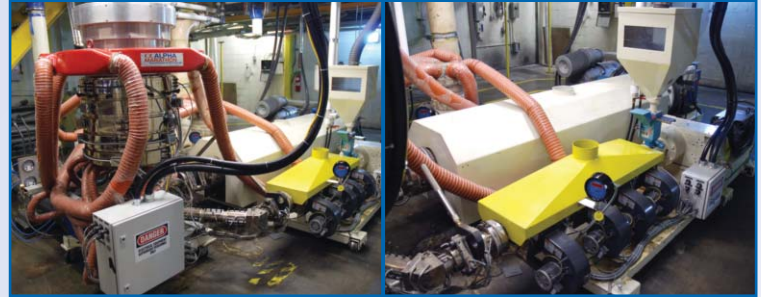


Line 1

LINE 1 – 750 LBS/HR



(2) 2013 ALPHA MARATHON SINGLE POSITION AUTO SURFACE WINDERS



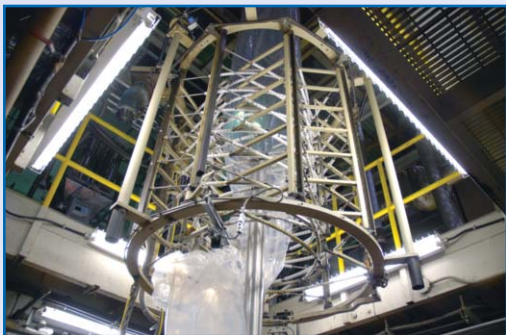
ALPHA MARATHON 11" DIE, KIEFEL & ALPHA MARATHON EXTRUDERS



SYNCR0 (2) 4 & (1) 6 COMPONENT, GRAVIMETRIC BLENDERS



OSCILLATING 67" MOTORIZED COLLAPERS & SECONDARY NIP



MOTORIZED BUBBLE CAGE



BERG POLYCOOL & BLOWER



PILLAR 4 SIDE TREAT (5 KW)

**Complete Blown Film**



# KIEFEL 3 LAYER CO-EX BLOWN FILM LINE

Line 4



(2) KIEFEL SINGLE POSITION AUTO SURFACE WINDERS



KIEFEL 10" DIE, 3 KIEFEL EXTRUDERS



MOTORIZED BUBBLE CAGE

LINE 4 - 725 LBS/HR



(3) MOULD TEK 4 COMPONENT GRAVIMETRIC BLENDERS



PILLAR 4 SIDE TREAT (5 KW)



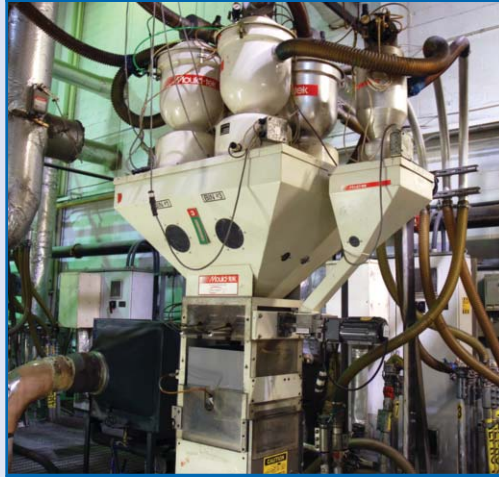
OSCILLATING 67" MOTORIZED ROLLER COLLAPERS

Line Specs On Page 11

# KIEFEL MONOLAYER, 800 LBS/HR

# KIEFEL MONOLAYER, 800 LBS/HR

# KIEFEL MONOLAYER, 700 LBS/HR



# Blown Film Line Specifications

Line	1	2	3	4	5
<b>Description</b>	3 Layer Co-Extrusion	Monolayer	Monolayer	3 Layer Co-Extrusion	Monolayer
<b>Resins Run</b>	LLDPE	HDPE & LLDPE	HDPE & LLDPE	HDPE & LLDPE	LLDPE
<b>Blenders</b>	(3) Syncro (2) 4, (1) 6 Component, Gravimetric, Syncro Loading System	Mould Tek 6 Component Gravimetric	Mould Tek 5 Component Gravimetric	(3) Mould Tek 4 Component Gravimetric	Mould Tek 5 Component Gravimetric
<b>Extruder Make</b>	(1) Kiefel / (2) Alpha Marathon	Kiefel	Kiefel	Kiefel	Gloucester / Brampton
<b>Year</b>	1996, Upgraded in 2013 at a cost of \$1,000,000	1996	1996	1999	Asst.
<b>Screw Diameter</b>	100 mm Grooved, 2- 2" Smooth	100 mm Grooved Feed	101 mm Grooved Feed	60/80/60 mm Grooved Feed	4.5" Smooth Feed
<b>Die Diameter</b>	11" (280mm)	12"	12"	10"	14" (Rotary)
<b>Die Gap</b>	1.4 mm	1.4 mm	1.4 mm	1.4 mm	0.086"
<b>Electrical Drives</b>	Kiefel DC / Alpha AC	AC	AC	AC Drives (Main Motor)	DC
<b>Motor Horsepower</b>	Kiefel 200 / Alpha 40	200	200	80 = 150 / 60 = 75	150
<b>Air ring</b>	Dual lip	Dual Lip	Dual Lip	Air Ring & IBC, Plus Spare 2012 Macro Dual Lip 14"	Saturn Dual lip
<b>I.B.C (Internal Bubble Cooling)</b>	Yes	Yes	Yes	Yes (Aerocools Upgrade)	Yes
<b>Treater</b>	Pillar 4 Side Treat (5 Kw)	Pillar 4 Side Treat (5 Kw)	Pillar 4 Side Treat (5 Kw)	Pillar 4 Side Treat (5 Kw)	2 Sherman 2 Side Treat (7.5 Kw)
<b>Edge Guides</b>	Fife Electronic Edge Guides	Fife Electronic Edge Guides	Fife Electronic Edge Guides	Fife Electronic Edge Guides	Fife Hydraulic Edge Guide
<b>Thickness Measurement</b>	N/A	2005 Solvtech BF200, DRO	N/A	2005 Solvtech BF200, DRO, PC	N/A
<b>Tower Height</b>	32'	32'	32'	32'	40'
<b>Bubble Cage</b>	Motorized	Motorized	Motorized	Motorized	Motorized
<b>Hauloff</b>	Oscillating 67", Motorized Collapsers	Oscillating 67", Motorized Collapsers	Oscillating 67", Motorized Collapsers	Oscillating 67", Motorized Roller Collapsers	Stationary 68"
<b>Winder</b>	(2) 2013 Alpha Marathon Single Position Automatic Surface Winders, Secondary Nip	2 Kiefel Single Position Automatic Surface Winder, Secondary Nip	Kiefel Single Position Automatic Surface Winder, Secondary Nip	2 Kiefel Single Position Automatic Surface Winder, Secondary Nip	Brampton Single Position Automatic Surface Winder, Secondary Nip
<b>Polycool</b>	Yes	Yes	Yes	Yes	Yes
<b>Max Layflat</b>	65"	65"	65"	65"	65"
<b>Max Roll Diameter</b>	45"	47"	47"	47"	48"
<b>Max Output</b>	750 lbs/hr	800 Lbs/hr	800 Lbs/hr	725 Lbs/Hr	700 Lbs/Hr



VIEW OF 11 SILOS

### SILOS

Outside: (7) 12' x 50', 200,000 lb Cap, (1) 9' x 40', 170,000 lb Cap  
 Inside: (3) Galvanized Silos: 10' x 12' x 5' 60 Degree Cone, 30,000 lb Cap, 2 With Rotary Valves & Blowers

### FACTORY SUPPORT

**BERG** 80 Ton Air Cooled Chiller, Model ASR-80-2, R22 Max 219 lbs/Circ, 86 HP, 575V, sn A535A-A1-1099, Plus Berg CT846 - 10 x 2 (20) x 5 x 5 - 5 Pumps, 575V, sn CT 7616-1195, Plus Roof Mounted (3) Blanchard Ness Air Cooled Condensers  
**GARDNER DENVER** Electra Saver II 75 HP Air Compressor, TG Air Dryer  
**MARCUS** 45 KVA Transformer Model MT45A7, 600/415-240, 60 HZ, 3 PH  
 Spare Extruder DC Drive Motors, 200 HP Blower  
 (9) **BLUE GIANT** Floor Scissor Lifts, 4'x3' - Approx. 5' Lift  
 Floor Scales



BERG 80 TON CHILLER



GARDNER DENVER 75 HP COMPRESSOR

### TERMS OF SALE



**Payment:** All payments must be in Cash, Certified Funds, Wire Transfers, or Company Checks, which must be accompanied with a bank letter guaranteeing irrevocable payment to Infinity Asset Solutions Inc. Invoices up to \$2,000 can be paid by Visa, Mastercard or Interac.

All Online bidders must register on Bidspotter by 5pm Monday June 23th .  
 A 15% buyers premium will be added to all onsite purchases (18% Online).  
 A \$500 refundable security deposit is required upon onsite registration (\$2,000 Online).  
 A 25% deposit is required at time of purchase, balance due by 4pm Wednesday June 25, 2014. NO EXCEPTIONS.

Member In Good Standing Of:



All goods are sold "As Is, Where Is", ALL SALES ARE FINAL. All subject to prior sale. Complete terms and conditions including removal procedures, are available on our website, will be posted at the auction and will be provided at the time of registration.

### REMOVAL TIMES

All Items Friday July 18th - Note Exclusive Rigging. **Hours:** Monday - Friday between 8 am - 4 pm. No items may be removed during auction. NO EXCEPTIONS.

**DIRECTIONS:** Toronto Airport to: 255 Brimley Road, Toronto, Ontario, M1M 3J2. Approx. 38km, 40 Mins. Exit Airport, Follow Signs to 401 East, Follow 401 to Exit 380 Brimley Road South, Destination is on the left.

*This brochure is meant merely as a guide. Infinity Asset Solutions and PerryVidex make no guarantee, expressed or implied, as to the accuracy of the information in this brochure. Buyers should inspect the goods beforehand to satisfy themselves.*

**INFINITY**  
 Asset Solutions  
 infinityassets.com 905.669.8893  
 AUCTIONS • LIQUIDATIONS • FINANCING • APPRAISALS

**PERRYVIDEX**  
 since 1932  
 www.perryvidex.com • 1.609.267.1600