

# PUBLIC AUCTION



## MARENER INDUSTRIES INC.

*Late Model Fabricating and  
Structural Steel Manufacturer*

3657 North Marginal Road, Halifax, Nova Scotia, Canada



2010

Low Hours

ESAB SHADOW DX-4000 PLASMA SYSTEM

Up To 2" Cap.



2002

250 Ton x 12'

PIRANHA MODEL 25012, PRESS BRAKE



2002

PIRANHA MODEL TC3/8-12, SHEAR

3/8" x 12'



2010

100K + New

(6) FRONIUS MODEL TRANSPULS SYNERGIC 2700 WELDERS

**AUCTION: Tuesday April 30, 10:30 AM (ADT)**

**Inspection: Monday April 29, 9 AM to 4 PM**

**Bid Live Onsite  
& Online Via  
Bidspotter.com**

 **INFINITY**  
Asset Solutions

AUCTIONS • LIQUIDATIONS  
FINANCING • APPRAISALS

**905.669.8893**  
infinityassets.com

 Like us at: facebook.com/  
Infinity-Asset-Solutions-Inc

 Follow us at: twitter.com/  
InfinityAssets

# LATE MODEL, WELL MAINTAINED FABRICATING FACILITY

## PLASMA CUTTING SYSTEM

11' x 30' Water Table



ESAB Shadow Dx-4000 Gantry Type Plasma Cutting System With Precision Plasmart 360 Power Source, CC-11 Coolant Circulator, Up To 2" Cutting Capacity, Note: Low Hours S/N 0560947520

View Of ESAB Controls, Cutting Head And Power Source

## HYDRAULIC PRESS BRAKE

2002



PIRANHA Model 25012, 250 Ton X 12ft CNC Hyd. Press Brake With 8" Variable Stroke, 17" Open Height, 90 IPM Approach Speed 20hp, 10'6" Between Housing, 8" Throat, Full Function Pedestal Control With Dual Palm Buttons, Automec CNC 99 2 Axis Cnc Back Gauge, (2) 36" Support Arms, 12ft 4 Way Die And Various Press Brake Dies, 37 000 Lbs, S/N 1011



View Of Autogauge Back Gauge



## HYDRAULIC SHEAR

2002



PIRANHA Model TC3/8-12, 3/8" x 12ft Hydraulic Shear With CNC Full Programmable Back Gaugefront, 24 SPM, 15 Holddowns, 20 HP, 24 500 Lbs, 49" Squaring Arm, (3) 24" Support Arms, S/N T3/8-12-1002



View Of Shear Back Gauge



# NICE OFFERING OF MATERIAL HANDLING & ROLLING STOCK

## FREE STANDING CRANE SYSTEMS



2010

Remote Control

Approx. 170' X 40' Free Standing Structure

**ATLANTIC CRANE** 15 Ton Overhead Bridge Crane, Underslung, Single Girder, Approx. 40ft Span, 15 Ton Underslung Hoist, Buss Bar, Top Running Rails, I-Beams



2010

Approx. 115' X 18' Free Standing Structure

**ATLANTIC CRANE** 10 Ton Overhead Bridge Crane, Top Running, Double Girder, Approx. 18ft Span, 10 Ton Hoist, Buss Bar, Top Running Rails, I-Beams, Remote Control



2010

20' Arm

(2) **GORBEL** 2 Ton Jib Cranes, With Kito 2 Ton Hoists, 20ft Arms, Kito Hoists

## FORKLIFTS & ROLLING STOCK



Engine Rebuilt In 2011

10,000 Lbs. Cap.

**CLARK** Model C500HY160 Diesel Forklift With Cab Enclosure, Side Shift S/N HY1625-4-1198



Low Hours

7,000 Lbs. Cap.

**TOYOTA** 7F-GU35 LPG Forklift W/ Side Shift, 3 Stage Mast W/187" Lift, S/N 61369



2007

39,222 KMs

**GMC** Model W4500 S/A Van Truck W/ 18' Box, C/W 5.2i Diesel, VIN J8DC4816977001017



2010

Dual Axle

**IDEAL** 16' T/A Enclosed Trailer, 7,000 Lbs. GVWR, S/N 209FA32A4AV098482



31' Reach

**GENIE** Z-30/20 Electric Telescopic Boom Lift, 500 Lbs Cap., S/N 30-Z30-2884

# LARGE CAPACITY OF TURNING AND BENDING

## LATHES



**20" x 79" Cap.**

**CY-DRUMMOND** Model 500x2000g Gap Bed Engine Lathe With 4 1/4" Bore, 1120 Rpm, 3 Jaw Chuck, Tool Positioner S/N 12-487



**25" x 108" Cap.**

**DEAN SMITH & GRACE** Model - Type 25 Gap Bed Engine Lathe With 4" Bore, 26" 4 Jaw Chuck, 42" Gap, S/N 317462-58



**21" x 84" Cap.**

**WHACHEON** Model 20172Y80 Engine Lathe With 3 1/4" Bore, 1,350 RPM S/N 28102



**COLCHESTER** Tool Room Lathe With 13" Swing X 25" Centers, 1,200 Rpm S/N 74162

**DEAN SMITH & GRACE** Model 31746 Engine Lathe With 15" Swing X 60" Centers, 2" Bore, 2,240 Rpm, 3 Jaw Chuck, Tool Positioner, S/N 40286-4-75

## ANGLE BENDING ROLLS



**2001**

**2.75" x 2.75" x 1/4" Cap.**

**ZOPF** Model ZB100H Angle Bending Rolls, 2.75" X 2.75" X 1/4", 2" Tube Cap., Hyd Upper Roll Adjustment, Digital Display, Asst. Dies, S/N 01352R

## TANK TURNING ROLLS



**2 Sets Avail.**

**WEBB** T-30-PWR Power Turning Rolls With 10,000 Lbs. Cap., With Idlers S/N 2501, 2585

## OIL FIRED BOILER



**2009**

**\$110K Replacement Cost**

**DE-DIETRICH** Model Gt 338-A Oil Fired Boiler, 1,146,000 BTU, 90 PSI, Max Temp 248, S/N 1312-0310-00048

Bid Live ONSITE or ONLINE at **BidSpotter.com**



# WELL MAINTAINED MACHINE SHOP

## MACHINE SHOP



**CORREA** Fu-125 / Cm 100 Universal Mill With Dividing Head, 16" X 63" Table, Power Feed, Power Head Stock, Divisor Device, 1700 Vertical RPM, 1,400 Horizontal RPM S/N 1450424



**CORREA** F2UA Universal Mill With 12" X 48" Table, 3,150 Vertical RPM, 1,800 Horizontal RPM S/N 5101722



**FORADIA** Gk 50-1500 Radial Arm Drill With 32" X 19" X 19" Box Table, 1,400 RPM, 4ft Arm Travel, S/N 540432-ID



**WM MUIR & CO** No. 165 Vertical Slotter With 24" Rotary Table, S/N 165

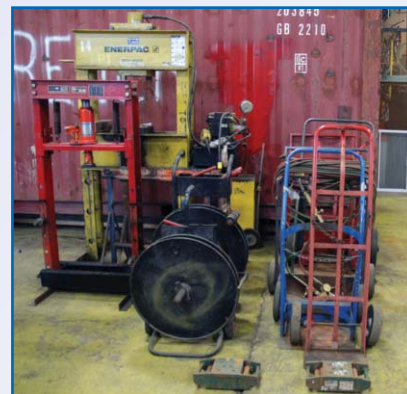


**POWER FIST** Model 8045518, 9" Horizontal Band-Saw, S/N 0053535



**BAXTER** 280M Horizontal Band-Saw With Clamping S/N 5738

**RIDGID** Model 1822 Pipe Threader With Stand



**ENER-PAC** 50 Ton H-Frame Hyd. Press W/ 13" Stroke

**2000 ARBOGA** A3008 Gear Head Drill, 3610 Rpm, 16"X13" Table S/N 348064

**FUHO** 500H Vertical Band Saw With 23.5"X22" Table, Blade Welder S/N H551156

## COMPRESSORS & DRYERS



**INGERSOL RAND** Portable Air Compressor, Diesel Engine, 2598 Hrs Mounted On 5' X 6' T/A Trailer



**DEVAIR** Model D-VAVC-5000-5, 15HP Air Compressor, 4,587 Hrs, S/N 36044-TE

**HANKISON** Air Dryer

**LEROI** 20HP, Twin Head, Piston Type Air Compressor

## LOAD CELL



**SCOTLOAD VISILINK** Load Cell, Land And Offshore Calibrated S/N 2025-340dh3

# 100+ WELDERS AND SUPPORT EQUIPMENT

## WELDERS



**2010**  
**6 Available**

**FRONIUS** Autot TPS2700, Transpuls Synergic 2700 Welders, All 6 Units C/W Multi-Volt (200-230 / 400-460) Power Convertors, 5 Units C/W Coolers, S/N's 21286183, 21286182, 21286184, 21286181, 21246897 & 20463577



(3) **LINCOLN** Model K2271-1, Vantage 500 Diesel Welders, S/N's U1030806148, U1040400182 & U1030511069.



Portable Gantry And Hoists



Partial View Of Welders



Partial View Of Welders

(2) **MILLER** Invision 352 MPA Welders C/W Miller XR Aluma-Feed Wire Feeders, S/N's MA150820A & MA150816A

**LINCOLN** Ideal-Arc Dc-600 Welder S/N C1020700542 C/W Lincoln Cobramatic Model K1587-1 Wire Feeder

(4) **LINCOLN** Model Ideal-Arc DC-600 Welders, S/N's 250335, 293700, 259982 & Ac554333

(18) **LINCOLN** Model LN25 Welders

(14) **LINCOLN** Model Multi-Weld 350 Welders

**RED-D-ARC** Model Zr-8, 225 Amp Gas Powered Welder W/ Kohler 20HP Engine, S/N U1050119444

**AIR LIQUIDE** Wolfpack 175 Gas Powered Welder W/ 9HP Honda Engine, S/N 23T0882

**MILLER** Syncrowave 350LX Welder, S/N 907199-03-1

**MILLER** Model Xmt-304 Dc Welder

**MILLER** Model Xr-V Wire Feed **MILLER-MATIC** 250 Dc Welder / Wire Feeder S/N KD463879,

**RED-D-ARC** Dc 600 Welder, S/N C19703882

**THERMAL-ARC** Model Viking 250gm Welder, S/N M61506A186602

**THERMAL-ARC** Model 300-GTSW Welder, S/N 092401a188809g

**THERMAL-ARC** Model Pak 5xt Plasma Cutter

**HYPER THERM** Model Power-MAX-1000, G3 Series, Plasma Cutter

## PORTABLE WASHROOM/TRAILER



# 200K + COST OF RAW MATERIAL, JIGS & SET UP TABLES

## JIGS, FIXTURES & STEEL SETUP TABLES



## RAW MATERIAL & WIP

**(Available Heat Certificates And Source Traceability) To Include:** 304 And 306 Gauge Stainless Steel-Variou Diameters (.078-3 Mm) Full Sheets, Large Qty Of Spring Wire, HSS Structural Steel, HRSA500C Various Lengths, 1/4 Inch - 4x8, 12x6, 4x4, 50WT 14x6x1/4 Impact Tested To -10C, C-Channel 6x8 Various Lengths, Various Lengths Square Tubing- 3/8- 2x1, 2x2, 1 1/2 X3, I Beam- 50W, Various Lengths 8x8, 6x8, 12x8, Steel Sheets- 4x8x1.20 A1101, 4x8x3/16. HR Plate 44W Multiple Sheets, Plate Steel: 2x24x46, 5/16 50WT CAT 5 4x10 Sheets, 1 1/2 8x8 350W Steel Plate CAT 5, Aluminum Pipe 1/4 To 4 Inch (Inside Diameter) Various Lengths, Steel Pipe 3/4 To 6 Inch (Inside Diameter) Various Lengths, Steel Tubing 6x6 And 4x6 Various Lengths



# OFFSHORE CERTIFIED SHIPPING CONTAINERS & TEST EQUIP.

## SHIPPING CONTAINERS

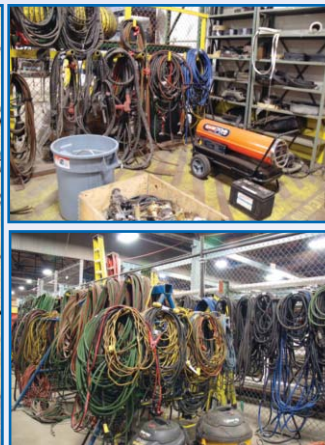
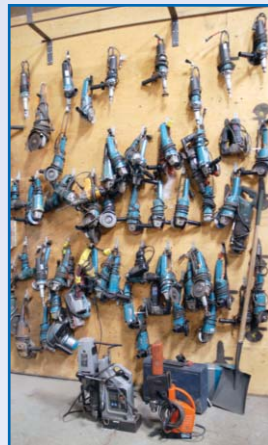


### PROXY BIDDING:

We will be happy to bid on your behalf if you are unable to attend our auction. Please call our office at 1-866-669-8893, or visit [infinityassets.com](http://infinityassets.com) to submit a proxy bid.

**Office To Include,** Notebook Computers, Server Room, Phone System, Boardroom Table And Chairs, Reception Desk, File Cabinets, Office Cubicles And More.

(7) 2003 STEEL & ENGINE PRODUCTS OFFSHORE SHIPPING Containers, DNV C2.7-1 certified, 6ft x 5ft x 8ft High 14ft & 20ft Shipping Containers



**ALSO:** Storage Racks, Gantry Crane, Ladders, King Saw, Slings, Pallet Trucks, Benders, Job Boxes, Setup And Burning Tables, Stores Inventory, Welder Guns, Slings, Hooks, Hoists, Hand Tools, Motors, Generators, Welders, Job Boxes, Cabinets, Tooling, Grinders, Work Tables, Vises, Cabinets, Job Boxes, Sanders, Welders, Drills, Inspection Equipment, Chains Etc.

### TERMS OF SALE



**Payment:** All payments must be in Cash, Certified Funds, Visa, MasterCard or Interac, Wire Transfers or Company Checks must be accompanied with a bank letter guaranteeing irrevocable payment to Infinity Asset Solutions Inc. Maximum credit card charge of \$2,000.

All Online bidders must register on Bidspotter by 5pm April 29th. A 15% buyers premium will be added to all onsite purchases (18% Online). A \$500 refundable security deposit is required upon onsite registration (\$2,000 Online). A 25% deposit is required at time of purchase, balance due by 4 pm, Wednesday May 1st, 2013. NO EXCEPTIONS.

All goods are sold "As Is, Where Is", ALL SALES ARE FINAL. All subject to prior sale. Complete terms and conditions including removal procedures, are available on our website, will be posted at the auction and will be provided at the time of registration.

### REMOVAL TIMES

All Items By Friday May 10th. **Hours:** Monday – Friday between 8 am – 4 pm. No items may be removed during auction. NO EXCEPTIONS.

**DIRECTIONS:** From Halifax International Airport To 3657 North Marginal Rd., Halifax: Approx. 35km, 30 mins.

Exit Airport, Follow Signs to 118S Halifax, continue to NS-111N/Halifax, continue over A Murray MacKay Bridge, exit toward service road, turn right toward Bayne St, Turn left onto Bayne St, Slight right onto Africville Rd, Continue onto N Marginal Rd, Destination on Left.

### HOTELS NEAR AUCTION SITE:

<b>Cambridge Suites</b>	1583 Brunswick Street, Halifax	902-420-0555
<b>Delta Barrington</b>	1875 Barrington Street, Halifax	902-429-7410
<b>Radisson Suite Hotel</b>	1649 Hollis Street, Halifax	902-429-7233

*This brochure is meant merely as a guide. Infinity Asset Solutions makes no guarantee, expressed or implied, as to the accuracy of the information in this brochure. Buyers should inspect the goods beforehand to satisfy themselves.*

Member In Good Standing Of:



**INFINITY**  
Asset Solutions 905.669.8893  
infinityassets.com  
AUCTIONS • LIQUIDATIONS • FINANCING • APPRAISALS

In conjunction with

**Asset Sales (Canada) Inc.**  
auctioneers \* appraisers \* real estate brokers  
www.asset-sales.ca

