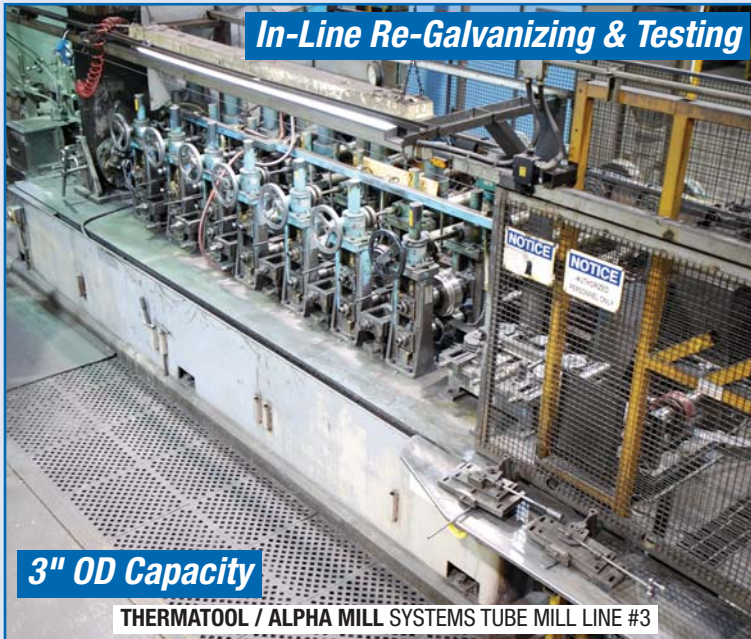


PUBLIC AUCTION

MULTICHAIR
MULTITUBE

MULTICHAIR & MULTITUBE 2 Steel Tube Manufacturing Facilities – **1 DAY AUCTION**



Auction: Tuesday May 5, 10:30 AM (ET)

Inspection: Monday May 4, 9 AM to 4 PM

Bid Live Onsite & Online Via
BidSpotter.com

All Assets At 6900 & 6953 Davand Drive Locations Will Be Sold Theatre Style at 6900 Davand Drive, Mississauga, Ontario Canada



INFINITY
Asset Solutions
infinityassets.com 905.669.8893

AUCTIONS • LIQUIDATIONS • FINANCING • APPRAISALS



a division of PPL Group LLC

105 Revere Drive, Suite C
Northbrook, IL 60062
www.pplauction.com
Phone: 224-927-5320 | Fax: 224-927-5311

COMPLETE THERMATOOL / ALPHA MILL SYSTEMS TUBE MILL LINE 1/2" TO 3" OD CAPACITY 600 FPM, IN-LINE RE-GALVANIZING & TESTING

PAGES 2-5 LOCATED AT 6900 DAVAND DRIVE

TUBE MILL #3 CONSISTING OF:

- (1) **NOVA** Double Uncoiler, 1997, Full Back Plates, Model # DBLUNC, 17" Wide, Air Brakes, Hyd. Expansion, Powered Rotation, 4-Leaf, 10,000 Lb. Coil / Side, 4 Retaining Keepers, sn 1663
- (2) **GUILD** Strip Shear & End Welder, 15" Hyd. Shear, Powered Auto Torch, Miller Tig Welder Syncrowave 250 DX, Control Panel.
- (3) **THERMATOOL** Horizontal Strip Accumulator, 14' Diameter Table, 14" Strip Capacity, (1) 25 HP Feed In DC Motor, (1) 50HP DC Drive Motor 1999, Electric Panels, Push Button Controls.
- (4) **THERMATOOL/ALPHA** Tube Mill, Entry Strip Guide 4-Rolls, Edge Trimming, Forming Mill, (7) Vert. Stands, 2" Shafts Forming 12" Roll Space Fins 6" Roll Space, 4.5" -8.5" Vert. Adj. & (2) 50 HP DC Motors, 6 Side Roll Units w/ Vert. Adj. & Top Straps. Note: All Vertical Stands have Single Point Adjustment. Mandrel Bracket, 3-Roll Weld Pressure Unit, **THERMATOOL** 250 KW "Solid State" High Frequency Welder, Heat Exchanger, Double Scarfing Unit w/Bead Winder, **SULZER METCO** ValuArc Zinc Re-Spray Unit, Power Supply, Seam Ironer Pass, **MAC (MAGNETIC ANALYSIS CORP.)** Model 470, Mac 150 Control Center Weld Tester, 20' Long Cooling Zone, Filter System, Pumps & Piping, Sizing Mill w/ 3 Vert. Stands 2" Shafts 6" Roll Space & 50 HP DC Motor, (3) Side Roll Units w/ Vert. Adj. & Top Straps, (1) Measuring Wheel, (1) Double Sided Turkshead w/ 8 Rolls, Paint Spray & Testing Unit, (1) **THERMATOOL/ALPHA** Flying Shear Cutoff w/Double Cut Dieset, (1) **AMS** Length Control System, Allen Bradley Panel View Plus, 30' Runout Table Single Dump w/Incline Table.
- (5) All Mill Stands w/ Single Point Adjustments.
- (6) Complete **THERMATOOL** Electrics & Mill Drive Controls.
 - Ridgewood Cut-off Control Panel Sept./14
 - Thermatool Accumulator Control Panel
- (7) Three 50 HP **CUTLER HAMMER** Motors w/ 2 Speed Drive-All Shift Boxes.
- (8) Drive Shaft type Mill w/ Cone Gearboxes D40T70's.
- (9) Dust Collection System.
- (10) 4 Ton Jib Crane, Heavy Duty, Approx 10', Shaw Box 4 Ton Hoist, Pendant, Approx 11' Under Jib (May be sold separately)



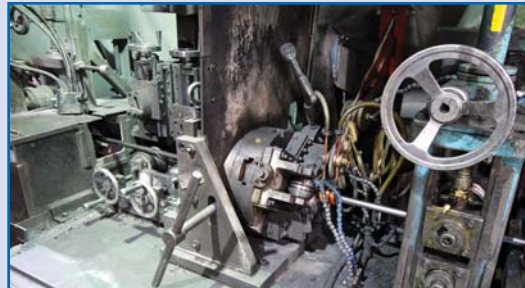
THERMATOOL 14' Horizontal Strip Accumulator



THERMATOOL 7 Stand Forming Mill



NOVA Double Uncoiler, 10,000 lb



THERMATOOL 250 KW Solid State HF Welder



Sizing Mill



GUILD Strip Shear & End Welder



THERMATOOL / ALPHA Flying Shear Cutoff

COMPLETE YODER M2 TUBE MILL LINE 1/2" TO 2 1/2" OD X .095" WALL CAPACITY, IN-LINE RE-GALVANIZING & TESTING



THERMATOOL M3 14' Horizontal Strip Accumulator



GUILD Strip Shear & End Welder



Sizing Mill



YODER M2 Tube Mill



Turkshead



BETARAM Flying Shear Cutoff



Partial View: 54 Sets of Mill Tooling

Spare Oscillator Tube & Double Turkshead Available



Spare Double Cut Diesel

TUBE MILL #2 CONSISTING OF:

- (1) **SAMCO** Double Uncoiler, 1987, Full Back Plates, Model # S6000DE, 18" Wide, Air Brakes, Manual Expansion, Manual Rotation, 4-Leaf, 6,000 Lb. Coil / Side, 4 Retaining Keepers, sn 87-128A
- (2) **GUILD** Strip Shear & End Welder, Model # PSA 2000, Job # MC079605, 10" Wide, Miller Tig Welder Syncrowave 250
- (3) **THERMATOOL** M3 Horizontal Strip Accumulator, sn 301, 14' Diameter Table, 12" Wide Strip Capacity, (1) 25 HP Feed In DC Motor, (1) 50HP DC Drive Motor, Ridgewood Electric Panels (yr. 2000) and Push Button Controls.
- (4) **YODER** M2 Tube Mill, Entry Strip Guide w/Edge Trimming, Forming Mill (6) Vert. Stands, 2" Shafts, 12" Roll Space & 50 HP DC Motor, 6 Side Roll Units, Vert. Adj. & Top Straps, Mandrel Bracket, (3) Roll Weld Pressure Unit, **INDUCTRON** 150KW High Frequency Welder, Scarfing Unit w/ Bead Winder, **SULZER METCO** ValuArc Zinc Re-Spray Unit, Power Supply, Seam Ironer Pass, **MAC (MAGNETIC ANALYSIS CORP)** Model PS1 Mac 150 Control Center Weld Tester, Approx 20' Custom Cooling Zone, Filter System, Vicab Heat Exchanger, Pumps & Piping, (1) Side Roll Support Stand, Sizing Mill (3) Vert. Stands, 2" Shafts 12" Roll Space, 50 HP DC Motor, (3) Side Roll Units w/ Vert. Adj. & Top Straps, (1) Measuring Wheel, (1) Double Sided Turkshead w/ 8 Rolls, Paint Spray & Testing Unit, (1) **BETARAM** Flying Shear Cutoff sn E41 w/ Single Cut Dieset, (1) **AMS** Length Control System, Allen Bradley Panel View, 20' Runout Table Single Dump w/ Incline Table & Coolant Blowoff System.
- (5) Complete **RIDGEWOOD** Electrics Mill Drive Controls Installed in July 2000.
- Ridgewood Cut-off Control Panel Oct./10
- Ridgewood Accumulator Control Panel.
- (6) Oil Recirculating System on Mill Gearboxes.
- (7) Dust Collection System.
- (8) (2) 50 HP DC Mill Drive Motors w/ Drive-All 2-Speed Shift Boxes.

Please Visit Website For More Pictures Of Tube Mills



Turkshead Tooling

MILL TOOLING

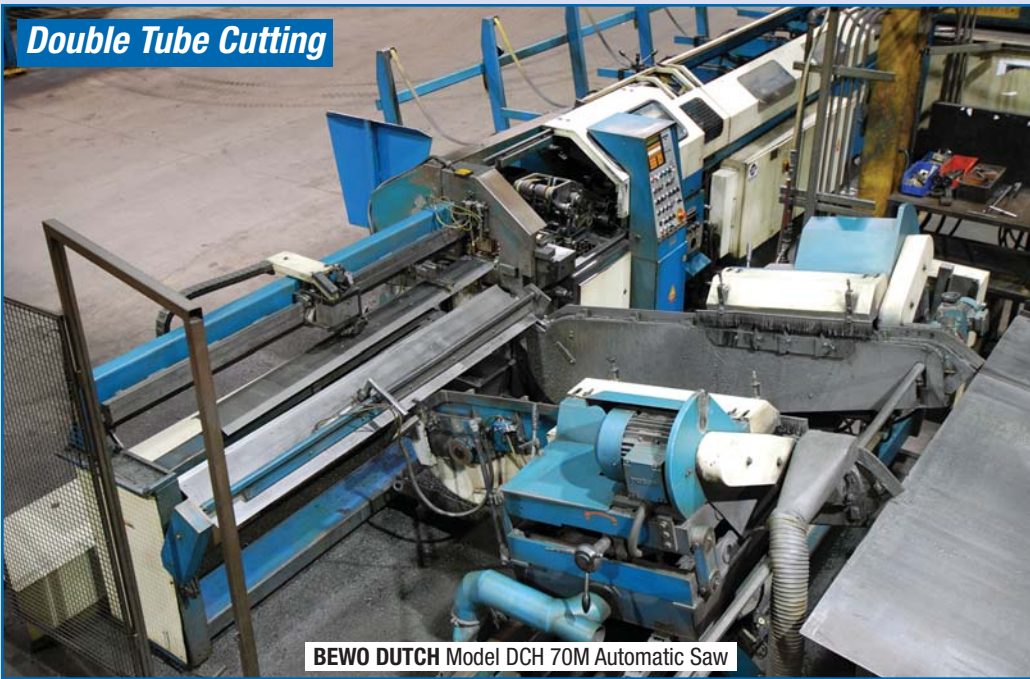
54 Sets By: **S.S.T., ROLL KRAFT, EMPIRE, DIECO**, Size Range 0.500 – 2.755, Jaws: Round, Square, Oval, Rectangle, Turkshead Tooling, Also Available: 8 Heavy Duty Mill Tooling Rolling Carts

MILL SUPPORT

ICS SYSTEMS Approx. 20 Ton Chiller, Model TTS-3200, sn 0500-3773

Large Quantity of Die Sets, Gearboxes, New Motors, Parts, Bearings, Blades, Knives, Gears, Etc.

Double Tube Cutting



BEWO DUTCH Model DCH 70M Automatic Saw

2001



HAVEN Model # 873 Hydraulic Tube Re-Cut System



HAVEN Model # 871 Hydraulic Tube Re-Cut System

**Huge Quantity of
HAVEN; Jaws, Knives
& Rollers Available**

AUTOMATIC SAW

2001 **BEWO DUTCH** Saw Model DCH 70M, Cut-To-Length Saw, Double Cut, Capacities: Tube: 2x Dia .59" – 2x Dia 2.75", Square: 2x .59" X .59" – 2x 1.97" x 1.97", Rectangular: 2x .78" X .59" – 1.97"x1.57", Saw Blade Diameter 12.4" – 13.8", Min Product Length 1.18", Min Head Length .59", Pinholes Diameter (Pitch) 4 Holes of .43" At 2.48" From Heart, Feed Table Max Length of Initial Product 275.6", Stock Fedded Bundle Diameter 19.68", Lauer PCS 095 Topline Mini Controls, 24' Auto Bundle Infeed Conveyor, Dutch Saws DB-76 Dual Sided Deburr, Outfeed Conveyor, Drop Table, sn 0112081

COMPLETE HAVEN RE-CUT SYSTEMS

HAVEN Model # 873, 2001, sn 6760, 5 Belt 20' Automatic Bundle Loader Tube Feed System, Capacity: 1/2" – 3" OD x .125" Wall Thickness, Square 2.125", Up to 4,200 Cycle/Hr, Allen Bradley Panel View 550, Motorized Cut Length Target Adjustment, Exit Table & Drop Box, 2005 Haven Model # 960B Wire Brush Deburring Machine, sn 6765, 36" Brushes, Gravity Accumulation Table, 18 Sets of Jaws

HAVEN Model # 871, sn 2830, 5 Belt 15' Automatic Bundle Loader Tube Feed System, Capacity: .187" – 1.5" OD x .094" Wall Thickness, Square 1", Up to 5,400 Cycles/Hr, Allen Bradley Panel View 550, Motorized Cut Length 6' Target Adjustment & Drop Box, Kent Driven Exit Conveyor Table, Kent Model Burrmaster Wire Brush Deburring Machine, sn 10406, Adjustable Widths up to 10', Gravity Accumulation Table

SWAGERS / SHEARS

EAGLE EATON Leonard Tube Swager, Model C-2000, 4.5" Opening, 10 HP, sn 553696

EAGLE End Former Model C-2000, Hydraulic, 10 HP, sn 554319

ROBONEX Hydra-Shear Model SST-0150-5.50-1, 25 HP Hydraulic Cutoff Shear, sn 901178

(3) **DIECO/Custom** Hydraulic Tube Test Presses

HYDRAULEX Hydraulic End Forming Machine, R Cut, R1701700, 12' Table

Small Tube Shear Press, Foot Pedal

DEBURR

3 **BURRMASER** & Custom Deburring Stations, 12' Cap.

TUBE MEASURING & CUT STATIONS

(6) Multichair 14' Custom Manual Length Measuring Station, 1-2 Mitutoyo KL Counter DRO's, Available: Computer, Hand Scanner & Zebra Thermal Ribbon Printers

Cutoff System Including: **SCOTCHMAN** CPO 350 Cold Saw, 15' **TIGER STOP** Measuring Station, 6" Belt Sander 2005 Automatic Tube Feeder, Model EX90074

PRECISION INSPECTION

2001 **INSTRON SATEC SYSTEMS** Tensile Machine, Type UTM, Model 5592, Frame Cap 600 kn, Max Hyd Press 150 Bar, Including Press 2"x22" Bed, Computer, sn 5592P3325

2001 **INSTRON** Wilson Rockwell Hardness Tester, Series 2000, Pendant, sn R2000P3324

LEICA Diagnostic Digital Microscope, Measuring Software, JVC Colour Video, Computer Inspection Station, Scale

2 **MEIJI & OLYMPUS** Compound Microscopes

PRESI Model Mecapol P 255 U Dual 8" Disc Sanding Station

2 **IMPTECH** C10 Abrasive Cutters, 10" Disc

IMPTECH 20V Grinder Polisher Dual Station



In-Line with HAVEN 871

KENT Model Burrmaster Wire Brush Deburring Machine



EAGLE EATON Leonard Tube Swager, Model C-2000



EAGLE End Former Model C-2000



6 Available

Multichair 14'
Length Measuring
Station



36" Dia.

**CLEAN PRODUCTS Parts Washer,
Model CP 3740-SL**



2001

**INSTRON SATEC SYSTEMS Tensile
Machine, Type UTM**



2001

**INSTRON Wilson Rockwell
Hardness Tester, Series 2000**

PARTS WASHER

CLEAN PRODUCTS Model CP 3740-SL, 36" Rotary Table, Extra Shelf Attachment, sn 0204002586

TOOLROOM

CHEVALIER 8"x18" Surface Grinder Model FSG-3A20, sn 3A0613

CHEVALIER 8"x18" Surface Grinder Model FSG-3A20, sn 3A-0639

NORTON 6"x18" Surface Grinder

CAN-SAW Roll in Bandsaw

2 Drill Presses

SUPPORT EQUIPMENT

BROWN BOGGS 14L OBI Press, Approx. 30 Ton

HITACHI CC14 SF Chop Saw & Empire Precision Tooling Hydraulic Press Station

Mezzanine, Self Standing, Approx 10'x30'x9', Lights, Sprinkler, Staircase

(3) 2000 **AVON** Engineering 3 Ton Spreader Bars, 20', Model E00-9256, sn 3438-00

Drive on Floor Scale, 5'x7', DRO, Approx 2,500 lb Cap.

Liquid Processing Pump & Storage Tank

VEHICLES

2009 **TOYOTA** Camry Hybrid, Black on Grey Leather, Sunroof, NAV, Approx 161,611 km, VIN 4T1BB3EK9AV113580

2000 **FORD** F150 XL, Approx. 300,000+ km, VIN 2FTZF1727YCA42012

53' Tandem Axle Storage Trailer

16' Tandem Axle Trailer Frame

2 Diesel Storage Tanks, 2,300 Litre Capacity, Heavy Duty Electric Pumps

FORKLIFTS

2007 **LINDE** 9,305 lb, Model H50D, 2 Stage Mast, Side Shift, Finger Control, 184.5" Lift, 60" Forks, Diesel, sn H2X394U02963

LINDE 4,655 lb, Model H25D, 2 Stage Mast, Side Shift, 189.5" Lift, 42" Forks, Diesel, sn H2X393S03833

LINDE 3,025 lb, Model H20D-03, 2 Stage Mast, Side Shift, Diesel, 188" Lift, 42" Forks, sn H2X350S03785

LINDE 3,550 lb, Model H20D, 2 Stage Mast, Side Shift, Finger Control, 188" Lift, 42" Forks, Diesel sn H2X391A02279

WELDERS

(5) **MILLER** Deltaweld 302 Welders, (3) Miller S-22A Wire Feeds

LINDE UCC-305 Welder

AIR COMPRESSORS

2 **COMPAIR** 50 HP Model 218

1 **COMPAIR** 35 HP Model PUAS148

2 **PURESTREAM** Dryers, Model ACT 200U-2, 200 CFM

1 **SMC** Dryer Model PDE40-S

STORES

Spare Parts, Machines, Hydraulic, Pumps, Welders, Transformers, Motors, Torit, Waste Tank, New Motors, Stockroom, Parts, Racking, Ladders, Bearings, Safety, Parts, Hoses, Belts Etc

MISCELLANEOUS

Lockers, Carts, Racking, Fans, Material Carts, Plant Offices, Hand Tools, Scissor Tables, Work Tables, Pallet Jacks, Acetylene Sets, Radial Saw, Huge Quantity of Wood Pallets And Wood Material, Lunchroom, Biometric T&A System, Office: Furniture, Computers Cabinets, Boardroom, Server INTERMEC CK31 Hand Scanners, Walkie Talkies, TV's, Executive Furniture, Etc

TMC / YODER TUBE MILL LINE 1/2" TO 2 1/2" OD, 300 FPM CAPACITY, IN-LINE RE-GALVANIZING & TESTING

PAGES 6-7 LOCATED AT
6953 DAVAND DRIVE

TUBE MILL #1 CONSISTING OF:

- (1) Double Uncoiler, w/Coil Arms, 22" Wide, Air Disc Brakes, Manual Expansion, Manual Rotation, 4-Leaf, 6,000 Lb. Approx. Coil / Side, 4 Retaining Keepers.
- (2) Custom Strip Shear & End Welder, 9" Wide, Miller Econo Twin HF Tig Welder.
- (3) **KENT/TESGO** Floop Vertical Strip Accumulator, Machine # 2-1925, 10" Strip Capacity, (1) 20 HP DC Motor, Electric Panel, Push Button Controls.
- (4) **TMC/YODER** Tube Mill, Entry Strip Guide 4 Roll w/ Edge Trimming, Forming Mill w/ (7) Vert. Stands, 2" Shafts, 13" Roll Space, 50 HP DC Motor, 6 Side Roll Units w/ Vert. Adj. & Top Straps, Note: All Vertical Stands have Single Point Adjustment by Mill Tech, Mandrel Bracket, Seam Guide, 3 Roll Weld Pressure Unit, **THERMATOOL** 150 KW "Solid State" High Frequency Welder, Heat Exchanger, Double Scarfing Unit w/ Bead Winder, **SULZER METCO** ValuArc Zinc Re-Spray Unit, Power Supply, Seam Ironer Pass, **MAC (MAGNETIC ANALYSIS CORP.)** Model Mac 150 Weld Tester, 12' Cooling Zone, Filter System, Pumps & Piping, Sizing Mill w/ 3 Vert. Stands, 2" Shafts, 13" Roll Space, 50 HP DC Motor, 3- Side Roll Units w/ Vert. Adj. & Top Straps, (1) Measuring Wheel, (1) Double Sided Turkshead w/ 8 Rolls, Paint Spray & Testing Unit, (1) **ALPHA** Model SR8-2-30 Flying Shear Cutoff w/ Single Cut Dieset, sn 54, (1) Tallyrand Control System, 20' Runout Table Single Dump w/ 25' Incline Table.
- (5) All Mill Stands Upgraded w/ **MILL TECH** Single Point Adjustments.
- (6) **RIDGEWOOD ELECTRICS** Mill Drive Controls Installed in July 1997.
- Alpha Cut-off Control Panel
- (7) Oil Recirculating System on Mill Gearboxes.
- (8) Two 50 HP DC Mill Drive Motors w/ Drive-All 4-Speed Shift Boxes.
- (9) **TORIT** Dust Collection System.



KENT / TESCO Floop 10' Vertical Strip Accumulator



THERMATOOL 150 KW Solid State HF Welder



TMC / YODER 7 Stand Tube Mill



ALPHA Model SR8-2-30 Flying Shear Cutoff



Sizing Mill



Double Sided Turkshead

MILL SUPPORT

LOOPCO Double End Dedimpler Machine Model # M 1070, Ridgewood Electrics, Push Button Controls Custom Built Double End Wire Brush Deburring Machine

COMPLETE HAVEN RE-CUT SYSTEM

HAVEN Model # 873, 2001, sn 5230, 4 Belt 20' Automatic Bundle Loader Tube Feed System, Capacity: 1/2" - 3" OD x .125" Wall Thickness, Square 2.125", up to 4,200 Cycle/Hr, Allen Bradley Panel View 550, Motorized Cut Length Target Adjustment, Exit Table & Drop Box, **KENT** Model BM2 Burrmaster Wire Brush Deburring Machine, sn 10261, Adjustable Widths up to 10', Gravity Accumulation Table

TUBE COATING LINE WITH UV SYSTEM

PINES 20' Bundle Feeder, Approx 1998, Dynacut Power Feeder, Hot Water Wash Tank Rinse, Dual Blower Dry, Feed, Drum, Twin Vac Lacquer Clear Coat & Vacuum System, **R&D EQUIPMENT** 6 Lamp 450 Watts Each, Reflectors, UV Chamber Model UV-Cure, sn 2054, Runout Table, 150 FPM, Approx. Max Operating Speed 180, Computer, Zebra Printer, **HYDROVANE** 50 HP Air Compressor, Model 218PUAS575DC, Ultra Air Dryer, Oil Filter, Receiving Tank



2001

Spare Tailstock Available

HAVEN
Model #
873 Recut
System



KENT Model BM2 Burrmaster Wire Brush Deburring Machine

2006



2 Available

PANASONIC 6 Axis Welding Robot, Model TA1400

ROBOTIC WELD CELLS

2006 **PANASONIC** Welding Robot Model TA1400, 6 Axis, 6 KG payload, 54" Reach, Control Panel Model PA102S, sn J0813, Panasonic Weld Source Model WG-U1400, Code: YA1QCR61U02, Pendant Control, Performarc Dual Pallet Enclosure, Light Curtains (Robot #2)

2004 **PANASONIC** Welding Robot Model VR-006, 6 Axis, 6 KG payload, Control Panel Model PA102S, sn J0484, Panasonic Weld Source Model GX-R006, Code: YA1PCR61R02, Pendant Control, Performarc Dual Pallet Enclosure, Light Curtains (Robot #1)

TUBE CUTOFF SYSTEM

T&B 1.5" OD Auto Tube Recut, Hydraulic, **PINES** 18' Bundle Feeder, 5' Manual Drop Table, Plus Assorted Tooling

BUMPER MACHINE

2003 Multichair Bumper Machine Model M1CL-BM, Allen Bradley 600 Control, Custom, Punches, Inserts Bumper Plugs, Checks Length, Plus Vibratory Bowl Feeder, 15 HP Hydraulic

TUBE BENDERS

CONTINENTAL Hydraulics Tube Bender, Model CH TB 100, sn 040787, 2000 PSI, Up to 3 Bends, 2 pcs at a time

CONTINENTAL Hydraulics Tube Bender

PINES Bender, Model 2-1/2 x 4 Custom Plug Insertion Machine

PRESSES

SMERAL TRNAVA OBI Model LEN40C, 40 Ton, sn 1687

ROUSSELLE Deep Gap Type, Approx 15 Ton, Model 2G, sn 413

BROWN BOGGS OBI No 10, **BLOW** OBI

BAWDEN OBI No 4

TOLEDO OBI No 2 1/2

TOOLROOM / REPAIR DEPARTMENT

MAXIMART Mill, 10"x55", Power X&Y, Fagor 2 Axis DRO, 5 HP

FORWARD Mill, 10"x50", Power X&Y, Fagor 2 Axis DRO, 5 HP

CHIEN YEH Strong 1500 Lathe, 20"x60", 10" Chuck, 3" Bore, Tailstock, Steady, Follow

STANDARD MODERN, 14"x30", Model Utilathe, 8" Chuck, 1.5" Bore, Tailstock

STANDARD MODERN, 12"x20", Model 11LD, Anilam DRO, 6" Chuck, 1.5" Bore, Tailstock

MILLER CP-300, **MILLER** Dialarc 250, **MESSER** Alpha Tig 250,

UNITED AIR Smog Hog

ER MAIER Roll in Bandsaw

Horizontal Bandsaw

48"x100"x1" Heavy Duty Steel Table

FORKLIFTS

2006 **LINDE** 9,245 lb, Model H50D, 2 Stage Mast, Side Shift, Finger Control, 184.5" Lift, 60" Forks, Diesel, sn H2X394T03584,

LINDE 5,000 lb, Model H25D, 2 Stage Mast, Side Shift, Finger Control, 189.5" Lift, 42" Forks, Diesel, sn H2X393T03497

2008 **LINDE** 3,550 lb, Model H20D, 2 Stage Mast, Side Shift, Finger Control, 188" Lift, 42" Forks, Diesel, sn H2X391W02300

LINDE 3,025 lb, Model H20D-03, 2 Stage Mast, Side Shift, 188" Lift, 42" Forks, Diesel, sn H2X350S03792



Spare UV Ballasts Available

Complete R&D EQUIPMENT 6 Lamp UV Line, 450 Watts Each



2003

Multichair Bumper Machine



8 Presses Available

SMERAL TRNAVA 40 Ton OBI



1.5" OD

Complete T&B / PINES Tube Cutoff System

1 of 3 Lathes



CHIEN YEH 20"x60" Lathe



10 Available

MILLER Deltaweld 302 Welders



1 of 2 Mills

MAXIMART Mill

Finger Controls



One of 8 Forklifts, As New As 2008

LINDE 9,305 lb, Model H50D



2009

Navigation, Leather, Sunroof

TOYOTA Camry Hybrid



MUNCK 5 Ton, 32' x 135' Self Standing Crane System

Bid Live Onsite & Online Via
BidSpotter.com

4 Spreader Bars
Available, Up To
10,000 lb Capacity



Partial View Of 425,000+ lbs of Assorted Raw & Finished Goods Inventory

CRANE SYSTEM

MUNCK 5 Ton, Self Standing, Approx 32' Span, 135' Runway, Top Running, Double Girder, Runway, Buzzbar, Approx. 14' Under Hook, sn 96-2364, 2002 - 5 Ton Spreader Bar, 10,000 lb Capacity, 16', sn 255949

BOILER

CLEAVER BROOKS 100 HP Boiler, Model CBH700-100, Datalogic Control, Steam, Natural Gas, 4,185,000 BTUH, Klenzoid Water Softener, Pumps, sn S-81830

AIR MAKEUP

ENGINEERED AIR, Model HE-401-0, 40,000 CFM P13/min, sn M7758-1 Ground Level

WELDERS

5 **MILLER** Deltaweld 302 Welders, S-22A Wire Feed Weld Curtains

AIR COMPRESSORS

COMPAIR Hydrovane 50 HP, Model 218
(2) **COMPAIR** Hydrovane 40 HP, Model 148
SMC PDE40-S Air Dryer

MISCELLANEOUS

Biometric T&A System, plastic wrap, modular plant office, maintenance parts room, asst motors, welders, racking, carts, portable plant office, scissor table, steel tables, office furniture & equipment, etc.

INTELLECTUAL PROPERTY

Website, Name, Phone Number



INVENTORY

Over 425,000+ lbs of Assorted Raw Material Coil and Tube Inventory Including:

- 61,827 lb: 2.500 OD X .115/.121 X 256
 - 31,455 lb: .855 OD X .058 MIN X 246
 - 15,315 lb: S COIL .700" x .086 MIN SMOOTH 1015
 - 13,943 lb: 2.500 OD X .065 X 240
 - 9,363 lb: S COIL 2.680" x .076 MIN CR CQ 1008
- Plus: Huge Quantity of Full Length Tube, Scrap Steel, Scrap Machines, Etc.

TERMS OF SALE



Payment: All payments must be in Cash, Certified Funds, Wire Transfers, or Company Checks, which must be accompanied with a bank letter guaranteeing irrevocable payment to Infinity Asset Solutions Inc. Invoices up to \$2,000 can be paid by Visa, Mastercard or Interac.

All Online bidders must register on Bidspotter by 5pm Monday May 4. A 15% buyers premium will be added to all onsite purchases (18% Online). A \$500 refundable security deposit is required upon onsite registration (\$2,000 Online). A 25% deposit is required at time of purchase, balance due by 4pm Wednesday May 6, 2015. NO EXCEPTIONS.

All goods are sold "As Is, Where Is", ALL SALES ARE FINAL. All subject to prior sale. Complete terms and conditions including removal procedures, are available on our website, will be posted at the auction and will be provided at the time of registration.

This brochure is meant merely as a guide. Infinity Asset Solutions and PPL Auction make no guarantee, expressed or implied, as to the accuracy of the information in this brochure. Buyers should inspect the goods beforehand to satisfy themselves.

REMOVAL TIMES

All items by Wednesday May 27, 2015.

Hours: Monday – Friday between 8 am – 4 pm.

No items may be removed during auction. NO EXCEPTIONS.

DIRECTIONS: From Toronto Pearson Intl Airport To: 6900 Davand Drive, Mississauga, Ontario, L5T1J5 (Approx 10 km, 10 mins): Exit Airport Take Jetliner Rd to Airport Rd North, Follow Airport Rd, turn Left (West) on Derry Rd E, turn Left (South) on Dixie Road, turn Right (East) on Director Gate, Turn Right (North) on Davand Dr, Destination is on your left.

Member In Good Standing Of:



INFINITY
Asset Solutions
infinityassets.com 905.669.8893
AUCTIONS • LIQUIDATIONS • FINANCING • APPRAISALS

ppl auction
a division of PPL Group LLC

105 Revere Drive, Suite C
Northbrook, IL 60062
www.pplauction.com
Phone: 224-927-5320 | Fax: 224-927-5311